

---

## MONTHLY NOTIFIABLE DISEASE SURVEILLANCE REPORT

Data contained within this monthly report is based on information recorded on EpiSurv by public health service staff up until 4 February 2010. As this information may be updated over time, the results should be regarded as provisional only.

---

### Table of contents

<b>1. Key notifiable disease trends</b>	<b>1</b>
<b>2. Outbreaks</b>	<b>3</b>
<b>3. Deaths from notifiable diseases</b>	<b>3</b>
<b>4. Trends in selected diseases to January 2010</b>	<b>4</b>
<b>5. Data Tables</b>	<b>5</b>

---

### 1. Key notifiable disease trends

- *Campylobacteriosis*: 839 campylobacteriosis cases were notified in January 2010 compared to 791 cases notified in the same month of the previous year (Figure 1). Seven hundred and twenty nine cases were reported to be laboratory-confirmed. For the 12 month period ending 31 January 2010, the highest incidence rates were reported from Hutt Valley (256.5 per 100 000 population, 366 cases) and Capital and Coast (248.5 per 100 000 population, 716 cases) DHBs compared to a national rate of 167.4 per 100 000 population.
- *Cholera*: The cholera case reported in January 2010 on further investigation was found to be not a case. The case has since been de-notified.
- *Giardiasis*: 153 giardiasis cases were notified in January 2010 compared to 123 cases notified at the same time last year (Figure 2). Canterbury DHB reported the highest number of cases (26 cases), followed by Counties Manukau (22 cases) and Auckland (20 cases) DHBs. Among cases where risk factor information was recorded, 46.7% (14/30) had recreational water contact during the incubation period, 39.1% (9/23) had faecal contact, 30.8% (8/26) had consumed untreated water, 26.9% (7/26) had contact with another symptomatic person, 24.0% (6/25) had contact with farm animals, 19.2% (5/26) had consumed food from a food premise, 15.8% (6/38) had travelled overseas, 11.1% (4/36) attended school and 4.5% (1/22) had contact with a sick animal. Three *Giardia* outbreaks were reported involving 11 cases.
- *Haemophilus influenzae* serotype b: Three cases of *Haemophilus influenzae* serotype b (Hib) were notified in January 2010, all of which were laboratory-confirmed. The cases were aged less than one year (1 case), 30-39 years (1 case) and 60-69 years (1 case) and were from Waikato (2 cases) and Canterbury (1 case) DHBs. The infant and one of the adults were not immunised, and the vaccination status of the other adult was unknown. All three cases were hospitalised. The 60-69 year old case died and Hib was reported as the primary cause of death. This case had significant comorbidities including neutropaenia.

- *Malaria*: 10 cases of malaria were notified in January 2010 compared to two notified in the same month of the previous year. Cases were distributed by age as follows: 20-29 years (3 cases), 30-39 years (3 cases), 40-49 years (2 cases), 50-59 years (1 case) and 60-69 years (1 case). Eight cases were overseas during the incubation period and travel history is unknown for the remaining two cases. The countries/regions visited were Cambodia (2 cases), and Central and West Africa, Congo, Germany, Ghana, Nigeria, Papua New Guinea, Sudan, United Kingdom, and Vanuatu (1 case each). Four cases were infected with *Plasmodium falciparum*, four cases infected with *P. vivax*, the plasmodium species was indeterminate for one case and was unknown for the remaining case.
- *Meningococcal disease*: Based on the earliest date available<sup>1</sup>, seven cases of meningococcal disease were notified during January 2010, six (85.7%) were laboratory-confirmed. In comparison, nine cases were notified in the previous month, December 2009, and eight cases were notified during the same month last year. For the 12 month period ending 31 January 2010, Tairāwhiti DHB recorded the highest incidence rate of 13.0 per 100 000 population (6 cases), followed by MidCentral (6.0 per 100 000 population, 10 cases) and Lakes (4.9 per 100 000 population, 5 cases) DHBs. The highest age-specific incidence rate was in infants aged less than one year (41.2 per 100 000 population, 26 cases), followed by those in the 1-4 years age group (13.2 per 100 000 population, 32 cases).
- *Pertussis*: 95 cases of pertussis were notified in January 2010, compared to 142 in the preceding month and 79 notifications in the same month of the previous year. There were 40 (42.1%) laboratory-confirmed cases. The highest number of cases were reported by Capital and Coast DHB (15 cases), followed by Waikato (14 cases) and Canterbury (12 cases) DHBs. For the 12 month period ending 31 January 2010, the highest incidence rates were reported from West Coast (73.6 per 100 000 population, 24 cases) and Waikato (65.3 per 100 000 population, 235 cases) DHBs compared to a national rate of 32.7 per 100 000 population. The current 12 month rate by age group was highest amongst infants aged less than one year (179.2 per 100 000 population, 113 cases), followed by children in the 1-4 years age group (58.2 per 100 000 population, 141 cases). There were three outbreaks due to *Bordetella pertussis* involving 11 cases. Further analysis of pertussis notifications is available in the Pertussis Report which is updated fortnightly and available from <http://www.surv.esr.cri.nz/surveillance/PertussisRpt.php>.
- *Rickettsial disease*: One laboratory-confirmed case of murine typhus was notified in January 2010. The case was a 50-59 year old male from Counties Manukau DHB and was hospitalised. The case had been in Nepal during the incubation period.
- *Toxic shellfish poisoning*: Six cases of toxic shellfish poisoning (1 probable, 4 suspect and 1 under investigation) were notified in January 2010. Paralytic shellfish poisoning (PSP) was suspected for three cases and the type of toxic shellfish poisoning (TSP) was unspecified for the remaining three cases. Five cases reported eating tuatua and one case reported eating pipis. The six cases are part of an outbreak resulting from consumption of shellfish from the coastal area between Tairua and Whakatane River during a time of public health warnings and had developed symptoms of TSP. Shellfish are monitored in this part of Tauranga and are known to have elevated PSP levels. Three cases were hospitalised.

---

<sup>1</sup> The 'earliest' date refers to the earliest recorded date for the case (onset or hospitalisation date rather than report date, if available). 'Earliest' date, as opposed to 'report date' alone, is used throughout the analysis of meningococcal disease notification data.

## 2. Outbreaks

*Completed outbreak reports:* 19 outbreak reports were entered into EpiSurv and completed during January 2010 (Table 1).

Table 1: Summary of completed outbreaks reported to ESR during January 2010

Organism/Toxin/Illness	Health District(s) where exposure occurred	Number of outbreaks	Total number of cases
<i>Bordetella pertussis</i>	Wellington	1	4
<i>Cryptosporidium</i>	Auckland	1	4
Gastroenteritis	Auckland, Hutt, Nelson Marlborough	5	52
<i>Giardia</i>	Auckland	2	8
Norovirus	Auckland, Taranaki, Manawatu, Nelson Marlborough, Canterbury	10	259
<b>Total</b>		<b>19</b>	<b>327</b>

*Interim outbreak reports:* 25 interim outbreaks have been reported in January 2010. The status of the outbreak and cases involved are subject to change, as more data becomes available.

Table 2: Summary of interim outbreaks reported to ESR during January 2010

Organism/Toxin/Illness	Health District(s) where exposure occurred	Number of outbreaks	Total number of cases
<i>Bordetella pertussis</i>	Hutt, Wellington	2	7
Gastroenteritis	Auckland, Waikato, Taranaki, Wellington, Otago, Southland	13	316
<i>Giardia</i>	Otago	1	3
Norovirus	Northland, Waikato, Hawke's Bay, Nelson Marlborough	7	126
<i>Salmonella</i>	Gisborne	1	-
Toxic shellfish poisoning*	Tauranga, Waikato	1	-
<b>Total</b>		<b>25</b>	<b>452</b>

\* Multiple Health District exposure/transmission

## 3. Deaths from notifiable diseases

Five deaths were reported for the month of January from invasive pneumococcal disease and legionellosis (Table 3).

Table 3: Summary of deaths from notifiable diseases reported to ESR during January 2010

Disease	District Health Board	Age group
<i>Haemophilus influenzae</i> type b	Waikato	60 to 69
Invasive pneumococcal disease	Waikato	70+
Legionellosis	Canterbury	50 to 59
Listeriosis - perinatal	MidCentral	30 to 39
Meningococcal disease	Auckland	1 to 4
Tuberculosis disease – new case	Counties Manukau	60 to 69

#### 4. Trends in selected diseases to January 2010

Figure 1: Campylobacteriosis notifications by month by year, January 2004 – January 2010

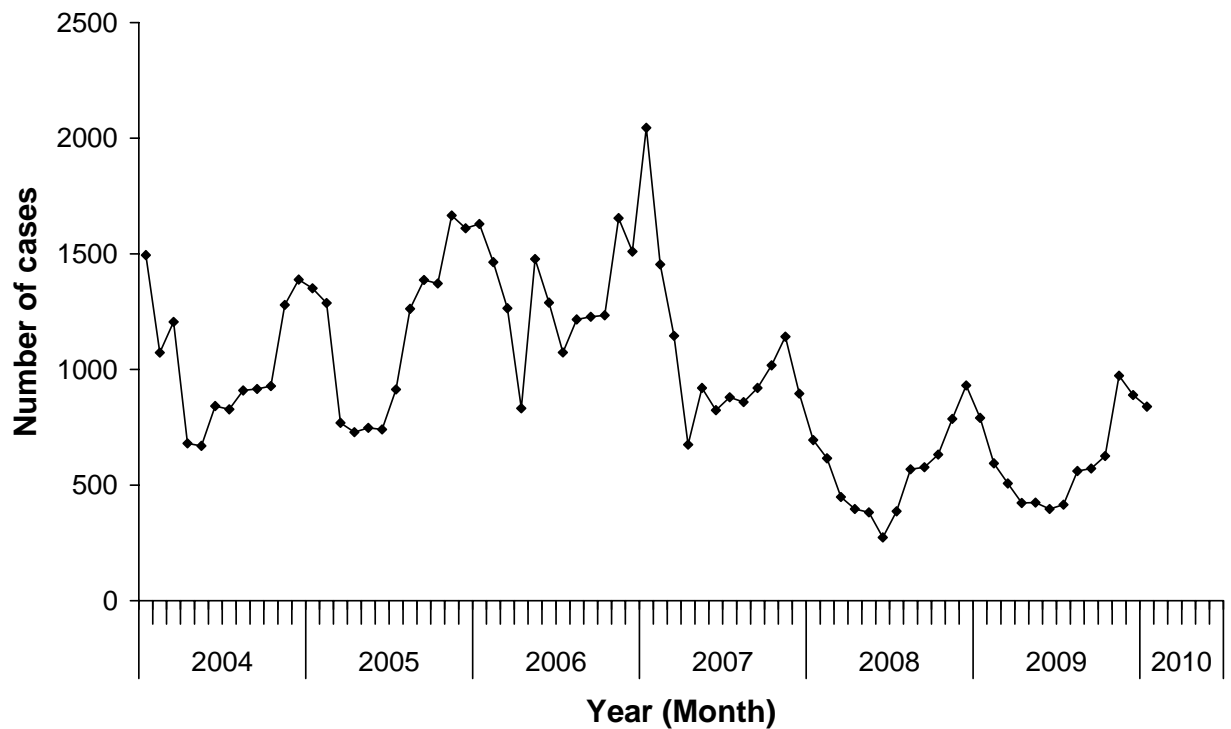
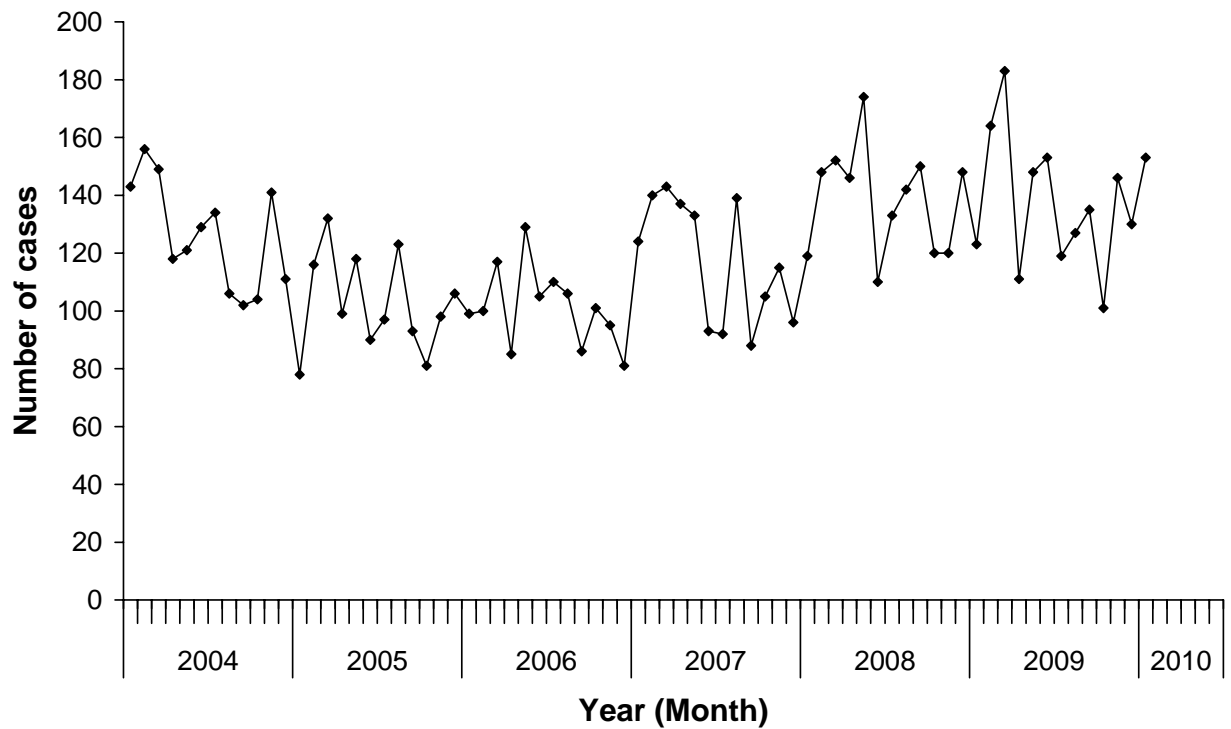


Figure 2: Giardiasis notifications by month by year, January 2004 – January 2010



## 5. Data Tables

### National Notifiable Disease Surveillance Data January 2010

Disease	Current Year - 2010 <sup>1</sup>			Previous Year - 2009		
	January 2010 Cases	Cumulative total since 1 January	Current 12 Month Rate <sup>2</sup>	January 2009 Cases	Cumulative total since 1 January	Current 12 Month Rate <sup>2</sup>
Campylobacteriosis	839	839	167.4	791	791	159.1
Cryptosporidiosis	68	68	20.7	30	30	18.0
Dengue fever	1	1	2.6	30	30	3.2
Gastroenteritis <sup>3</sup>	41	41	16.7	37	37	15.4
Giardiasis	153	153	38.7	123	123	39.0
Haemophilus influenzae type b	3	3	0.3	0	0	0.1
Hepatitis A	4	4	1.0	4	4	2.0
Hepatitis B <sup>4</sup>	5	5	1.3	6	6	0.9
Hepatitis C <sup>4</sup>	1	1	0.7	4	4	0.6
Invasive pneumococcal disease <sup>5</sup>	27	27	15.9	46	46	4.1
Lead absorption	8	8	8.5	11	11	7.4
Legionellosis	15	15	1.9	14	14	1.9
Leptospirosis	14	14	2.0	4	4	2.7
Listeriosis	4	4	0.7	2	2	0.6
Malaria	10	10	1.3	2	2	0.9
Measles	3	3	5.8	4	4	0.4
Meningococcal disease <sup>6</sup>	7	7	3.0	10	10	2.8
Mumps	7	7	1.6	0	0	1.5
Non seasonal influenza A (H1N1) <sup>7</sup>	3	3	85.1	0	0	0.0
Paratyphoid fever	1	1	0.6	2	2	0.6
Pertussis	95	95	32.7	79	79	11.3
Rheumatic fever	9	9	3.2	12	12	3.8
Rickettsial disease	1	1	0.2	0	0	0.2
Salmonellosis	98	98	25.1	145	145	30.3
Shigellosis	5	5	2.7	8	8	2.6
Tuberculosis disease	38	38	7.4	25	25	6.9
Typhoid fever	8	8	0.9	6	6	0.8
VTEC/STEC infection	9	9	3.2	16	16	3.0
Yersiniosis	47	47	9.5	67	67	12.0

<sup>1</sup> These data are provisional

<sup>2</sup> Rate is based on the cumulative total for the current year (12 months up to and including January 2010) or the previous year (12 months up to and including January 2009), expressed as cases per 100 000

<sup>3</sup> Cases of gastroenteritis from a common source or foodborne intoxication

<sup>4</sup> Only acute cases of this disease are currently notifiable

<sup>5</sup> Invasive pneumococcal disease became a notifiable disease on the 17th October 2008

<sup>6</sup> These totals and rates are derived from the EpiSurv report date as opposed to the earliest available date used in the meningococcal disease section of this report

<sup>7</sup> Non-seasonal influenza (capable of transmission between human beings) became an infectious notifiable disease on 29 April 2009.

Other notifiable infectious disease reported in January: Cholera (1) , Paralytic shellfish poisoning (3) , Ross River virus infection (1) , Toxic shellfish poisoning (3)

Notifiable Disease Surveillance Data by District Health Board January 2010

		Cases <sup>1</sup> and current rate <sup>2</sup> for January 2010 by District Health Board <sup>3</sup>																				
Disease		Northland	Waitemata	Auckland	Counties Manukau	Waikato	Lakes	Bay of Plenty	Tairāwhiti	Taranaki	Hawke's Bay	Whanganui	MidCentral	Hutt Valley	Capital and Coast	Wairarapa	Nelson Marlborough	West Coast	Canterbury	South Canterbury	Otago	Southland
Campylobacteriosis	Cases	14	101	74	61	72	21	50	3	28	48	17	28	49	82	8	24	6	95	10	26	22
	Rate	123.9	173.0	178.1	141.6	185.8	199.4	159.8	69.3	222.7	221.6	223.3	141.6	256.5	248.5	177.6	112.6	135.0	116.1	178.2	130.5	152.0
Cryptosporidiosis	Cases	0	4	4	4	1	1	0	1	1	2	1	0	0	3	1	1	2	39	1	1	1
	Rate	23.1	14.0	12.6	11.0	29.4	13.8	12.0	23.8	22.2	24.7	15.8	16.9	13.3	44.8	35.0	16.8	61.4	26.9	50.4	14.9	18.8
Dengue fever	Cases	0	0	1	0	0	0	0	0	0	0	0	0	0	0	0	0	0	0	0	0	0
	Rate	1.9	3.0	5.0	5.6	1.1	2.0	1.9	4.3	0.9	2.6	1.6	2.4	1.4	3.8	0.0	0.0	3.1	1.2	0.0	0.5	0.0
Gastroenteritis	Cases	1	10	7	4	3	0	0	0	0	1	1	4	4	3	0	0	0	1	1	1	0
	Rate	2.6	15.9	23.0	9.3	6.9	11.8	2.4	0.0	0.0	7.8	19.0	67.5	38.5	30.2	5.0	7.3	276.2	9.2	7.2	4.8	2.7
Giardiasis	Cases	4	17	20	22	8	7	6	1	5	5	2	2	3	14	2	3	2	26	1	3	0
	Rate	41.1	30.1	47.5	42.1	40.8	64.8	31.8	26.0	43.4	45.5	36.4	10.8	25.2	59.4	30.0	36.5	43.0	41.2	18.0	23.3	35.8
Haemophilus influenzae type b	Cases	0	0	0	0	2	0	0	0	0	0	0	0	0	0	0	0	0	1	0	0	0
	Rate	0.6	0.6	0.0	0.2	1.4	0.0	0.5	0.0	0.0	0.0	0.0	0.6	0.7	0.0	0.0	0.0	0.0	0.2	0.0	0.0	0.0
Hazardous substances injury	Cases	0	0	0	0	0	0	0	0	0	0	0	0	0	0	0	0	0	0	0	0	0
	Rate	0.6	0.4	0.2	0.0	0.0	0.0	0.0	0.0	0.0	3.2	0.0	0.6	0.0	0.3	0.0	0.0	0.0	0.0	0.0	0.0	0.0
Hepatitis A	Cases	0	0	1	1	1	0	0	0	0	0	0	1	0	0	0	0	0	0	0	0	0
	Rate	0.0	0.6	2.0	1.5	1.1	0.0	1.0	0.0	0.0	2.6	0.0	1.8	1.4	1.0	0.0	0.0	0.0	1.2	0.0	0.0	0.9
Hepatitis B	Cases	0	0	0	1	0	0	1	0	1	0	0	0	0	0	0	0	0	1	0	1	0
	Rate	1.9	1.1	2.7	1.5	0.3	1.0	1.9	2.2	0.9	0.6	1.6	1.2	0.0	0.7	5.0	1.5	6.1	0.8	0.0	1.1	0.0
Hepatitis C	Cases	0	0	0	0	0	0	0	0	1	0	0	0	0	0	0	0	0	0	0	0	0
	Rate	0.6	0.2	0.9	0.4	0.0	0.0	0.0	0.0	3.7	0.0	0.0	0.6	1.4	0.7	5.0	0.0	0.0	1.4	1.8	1.1	0.0
Ebola Virus Disease	Cases	0	6	0	5	2	1	1	0	2	1	1	1	1	2	0	0	0	1	0	2	1
	Rate	18.6	12.3	11.3	18.7	21.9	28.5	24.1	17.3	20.3	22.7	20.6	10.8	19.6	11.1	25.0	14.6	0.0	10.8	9.0	15.9	16.1
Lead absorption	Cases	0	1	1	0	1	0	0	0	0	0	1	1	1	0	0	1	0	0	0	1	0
	Rate	2.6	7.4	19.1	10.6	6.9	8.8	3.9	13.0	4.6	3.9	12.7	7.8	9.8	3.8	7.5	8.0	0.0	6.0	9.0	12.2	8.0
Legionellosis	Cases	0	4	1	2	1	0	0	1	0	0	0	0	0	0	0	0	1	4	0	0	1
	Rate	1.3	3.0	1.8	1.9	0.3	0.0	4.3	2.2	0.0	2.6	0.0	0.6	0.0	0.7	5.0	0.7	9.2	3.2	0.0	1.6	1.8
Leptospirosis	Cases	0	0	0	0	2	0	1	0	2	2	0	2	0	0	0	1	1	3	0	0	0
	Rate	4.5	0.2	0.2	0.2	4.7	2.0	5.3	0.0	4.6	3.2	4.8	4.8	0.0	0.3	2.5	1.5	18.4	2.0	3.6	0.0	3.6
Listeriosis	Cases	0	0	0	1	1	0	1	0	0	0	0	1	0	0	0	0	0	0	0	0	0
	Rate	0.0	0.8	0.9	0.4	1.4	0.0	1.0	4.3	0.9	0.0	1.6	1.8	0.7	0.3	0.0	0.0	0.0	0.4	0.0	1.1	0.0
Malaria	Cases	0	3	1	1	1	0	1	0	0	1	0	0	0	0	0	0	0	1	0	0	1
	Rate	0.0	1.7	1.6	3.9	1.1	0.0	1.4	0.0	0.9	1.3	0.0	0.0	0.0	1.0	2.5	1.5	6.1	0.8	0.0	0.0	0.9
Measles	Cases	0	0	1	0	0	0	1	0	0	0	0	0	0	0	0	0	0	1	0	0	0
	Rate	2.6	2.8	2.0	0.6	0.3	0.0	1.0	0.0	0.0	0.6	1.6	0.6	0.0	0.3	0.0	0.7	21.5	34.1	3.6	16.4	1.8
Norovirus	Cases	0	0	1	4	0	0	0	0	0	0	0	0	0	1	0	0	0	1	0	0	0
	Rate	3.9	1.1	2.7	4.4	2.5	4.9	3.9	13.0	2.8	3.9	1.6	6.0	3.5	3.5	2.5	0.0	3.1	2.4	0.0	2.1	3.6
Mumps	Cases	0	1	1	2	1	0	0	0	0	0	0	0	0	1	0	1	0	0	0	0	0
	Rate	1.9	1.1	1.1	1.0	2.2	1.0	2.4	0.0	1.8	0.6	0.0	0.0	2.1	3.1	5.0	1.5	3.1	2.8	5.4	0.0	0.0
Rubella	Cases	0	1	0	1	1	0	0	0	0	0	0	0	0	0	0	0	0	0	0	0	0
	Rate	115.6	63.2	83.8	65.0	50.3	49.1	50.5	108.2	30.5	113.1	112.4	47.6	149.3	178.8	135.1	58.5	199.4	119.5	136.8	42.4	41.1
Paratyphoid fever	Cases	0	0	0	0	0	0	0	0	0	0	0	0	0	1	0	0	0	0	0	0	0
	Rate	0.0	0.9	1.1	0.4	0.6	2.0	0.0	0.0	0.0	0.0	0.0	0.0	1.4	0.7	2.5	0.0	0.0	0.6	0.0	0.0	0.0
Pertussis	Cases	0	6	6	7	14	1	7	2	2	0	0	7	7	15	0	3	0	12	3	1	2
	Rate	11.6	22.7	15.8	14.7	65.3	30.5	30.8	32.5	40.7	17.5	9.5	19.3	40.6	41.0	17.5	61.4	73.6	62.0	52.2	10.1	25.9
Rheumatic fever	Cases	0	2	1	2	1	0	0	1	0	2	0	0	0	0	0	0	0	0	0	0	0
	Rate	9.6	1.7	2.7	8.7	5.6	2.9	1.9	23.8	0.0	4.5	0.0	0.6	3.5	2.1	0.0	0.7	0.0	0.2	0.0	0.0	0.0
Rickettsial disease	Cases	0	0	0	1	0	0	0	0	0	0	0	0	0	0	0	0	0	0	0	0	0
	Rate	0.6	0.4	0.0	0.2	0.6	0.0	0.0	0.0	0.0	0.0	0.0	0.0	0.0	0.3	0.0	0.0	0.0	0.0	0.0	0.0	0.0
Rubella	Cases	0	0	0	0	0	0	0	0	0	0	0	0	0	0	0	0	0	0	0	0	0
	Rate	0.0	0.0	0.2	0.0	0.0	0.0	0.5	0.0	0.0	0.0	0.0	0.0	0.0	0.3	0.0	0.0	0.0	0.2	0.0	0.0	0.0
Salmonellosis	Cases	5	9	7	7	13	0	0	4	2	3	0	4	4	6	0	4	0	15	4	11	0
	Rate	21.2	17.2	23.4	17.2	29.2	20.6	16.4	71.4	19.4	34.4	19.0	17.5	25.2	19.1	45.0	27.8	27.6	29.9	63.0	39.3	42.9
Shigellosis	Cases	0	1	0	2	0	0	0	0	0	0	0	0	0	0	0	0	0	2	0	0	0
	Rate	1.9	4.5	4.3	5.6	1.9	0.0	1.4	2.2	0.0	0.6	0.0	0.6	2.8	2.4	2.5	1.5	3.1	1.6	1.8	1.6	2.7
Tuberculosis disease	Cases	0	9	9	8	1	1	1	0	0	0	0	1	1	1	1	2	0	3	0	0	0
	Rate	5.1	10.2	14.2	13.9	4.7	7.9	6.3	13.0	0.0	5.2	1.6	4.2	7.7	6.6	2.5	3.7	6.1	4.8	3.6	1.1	1.8
Typhoid fever	Cases	0	2	2	3	0	0	1	0	0	0	0	0	0	0	0	0	0	0	0	0	0
	Rate	0.0	1.1	2.0	3.1	0.3	0.0	0.5	0.0	0.0	0.0	0.0	0.0	0.0	1.0	0.0	0.0	0.0	0.4	0.0	0.0	0.0
VTEC/STEC infection	Cases	0	1	0	1	0	0	2	0	0	0	0	0	0	1	0	0	0	3	0	1	0
	Rate	3.9	1.5	3.6	1.9	6.4	4.9	4.3	8.7	11.1	2.6	0.0	1.2	1.4	1.7	2.5	1.5	3.1	3.6	3.6	2.7	1.8
Yersiniosis	Cases	0	8	5	6	0	2	0	0	1	4	1	1	3	3	0	1	3	9	0	0	0
	Rate	6.4	10.0	14.2	7.5	6.9	9.8	1.9	4.3	11.1	11.0	6.3	3.0	15.4	12.5	0.0	2.9	46.0	12.9	14.4	9.6	2.7

<sup>1</sup> These data are provisional

<sup>2</sup> Current rate is based on the cumulative total for the 12 months up to and including January 2010 expressed as cases per 100 000

<sup>3</sup> Further data are available from the local Medical Officer of Health

‘b] Uglj`Y`dbYi a cVc`VVU`X]gYUgY`VYWUa`Y`U`bch]Z]UV`Y`X]gYUgY`cb`h`Y`Y`%+h`C`Vh`c`VYf`&\$\$,  
`H`YgY`h`H`U`g`UbX`f`UH`g`UFY`XYfj]`YX`Zfca`h`Y`9d]Gi`fj`fYdcfhXUH`Ug`cddcgYX`h`h`Y`YUf`Y]gh`Uj`Uj]`UV`Y`XUH`i`gYX`]b`h`Y`a`Yb]b[`c`Vc`VVU`X]gYUgY`gYVh]cb`c`ZH`jg`fYdcfh  
`Bcb]`gYUgcbU`]bZi`YbnU`f`VUdUV`Y`c`Zh`f`Ubga`]gg]cb`VYh`YYb`i`a`Ub`VY]b[`gk`VYWUa`Y`Ub`]bZYVh]ci`g`bch]Z]UV`Y`X]gYUgY`cb`&-`5dfj`i`&\$-\$`-`"

Notifiable Disease Surveillance Data by District Health Board January 2010

		Cases <sup>1</sup> and current rate <sup>2</sup> for January 2010 by District Health Board <sup>3</sup>																				
Disease		Northland	Waitemata	Auckland	Counties Manukau	Waikato	Lakes	Bay of Plenty	Tairāwhiti	Taranaki	Hawke's Bay	Whanganui	MidCentral	Hutt Valley	Capital and Coast	Wairarapa	Nelson Marlborough	West Coast	Canterbury	South Canterbury	Otago	Southland
Campylobacteriosis	Cases	14	101	74	61	72	21	50	3	28	48	17	28	49	82	8	24	6	95	10	26	22
	Rate	123.9	173.0	178.1	141.6	185.8	199.4	159.8	69.3	222.7	221.6	223.3	141.6	256.5	248.5	177.6	112.6	135.0	116.1	178.2	130.5	152.0
Cryptosporidiosis	Cases	0	4	4	4	1	1	0	1	1	2	1	0	0	3	1	1	2	39	1	1	1
	Rate	23.1	14.0	12.6	11.0	29.4	13.8	12.0	23.8	22.2	24.7	15.8	16.9	13.3	44.8	35.0	16.8	61.4	26.9	50.4	14.9	18.8
Dengue fever	Cases	0	0	1	0	0	0	0	0	0	0	0	0	0	0	0	0	0	0	0	0	0
	Rate	1.9	3.0	5.0	5.6	1.1	2.0	1.9	4.3	0.9	2.6	1.6	2.4	1.4	3.8	0.0	0.0	3.1	1.2	0.0	0.5	0.0
Gastroenteritis	Cases	1	10	7	4	3	0	0	0	0	1	1	4	4	3	0	0	0	1	1	1	0
	Rate	2.6	15.9	23.0	9.3	6.9	11.8	2.4	0.0	0.0	7.8	19.0	67.5	38.5	30.2	5.0	7.3	276.2	9.2	7.2	4.8	2.7
Giardiasis	Cases	4	17	20	22	8	7	6	1	5	5	2	2	3	14	2	3	2	26	1	3	0
	Rate	41.1	30.1	47.5	42.1	40.8	64.8	31.8	26.0	43.4	45.5	36.4	10.8	25.2	59.4	30.0	36.5	43.0	41.2	18.0	23.3	35.8
Haemophilus influenzae type b	Cases	0	0	0	0	2	0	0	0	0	0	0	0	0	0	0	0	0	1	0	0	0
	Rate	0.6	0.6	0.0	0.2	1.4	0.0	0.5	0.0	0.0	0.0	0.0	0.6	0.7	0.0	0.0	0.0	0.0	0.2	0.0	0.0	0.0
Hazardous substances injury	Cases	0	0	0	0	0	0	0	0	0	0	0	0	0	0	0	0	0	0	0	0	0
	Rate	0.6	0.4	0.2	0.0	0.0	0.0	0.0	0.0	0.0	3.2	0.0	0.6	0.0	0.3	0.0	0.0	0.0	0.0	0.0	0.0	0.0
Hepatitis A	Cases	0	0	1	1	1	0	0	0	0	0	0	1	0	0	0	0	0	0	0	0	0
	Rate	0.0	0.6	2.0	1.5	1.1	0.0	1.0	0.0	0.0	2.6	0.0	1.8	1.4	1.0	0.0	0.0	0.0	1.2	0.0	0.0	0.9
Hepatitis B	Cases	0	0	0	1	0	0	1	0	1	0	0	0	0	0	0	0	0	1	0	1	0
	Rate	1.9	1.1	2.7	1.5	0.3	1.0	1.9	2.2	0.9	0.6	1.6	1.2	0.0	0.7	5.0	1.5	6.1	0.8	0.0	1.1	0.0
Hepatitis C	Cases	0	0	0	0	0	0	0	0	1	0	0	0	0	0	0	0	0	0	0	0	0
	Rate	0.6	0.2	0.9	0.4	0.0	0.0	0.0	0.0	3.7	0.0	0.0	0.6	1.4	0.7	5.0	0.0	0.0	1.4	1.8	1.1	0.0
HbYgYj YdbYi a cVcVWU'X]gYUgY	Cases	0	6	0	5	2	1	1	0	2	1	1	1	1	2	0	0	0	1	0	2	1
	Rate	18.6	12.3	11.3	18.7	21.9	28.5	24.1	17.3	20.3	22.7	20.6	10.8	19.6	11.1	25.0	14.6	0.0	10.8	9.0	15.9	16.1
Lead absorption	Cases	0	1	1	0	1	0	0	0	0	0	1	1	1	0	0	1	0	0	0	1	0
	Rate	2.6	7.4	19.1	10.6	6.9	8.8	3.9	13.0	4.6	3.9	12.7	7.8	9.8	3.8	7.5	8.0	0.0	6.0	9.0	12.2	8.0
Legionellosis	Cases	0	4	1	2	1	0	0	1	0	0	0	0	0	0	0	0	1	4	0	0	1
	Rate	1.3	3.0	1.8	1.9	0.3	0.0	4.3	2.2	0.0	2.6	0.0	0.6	0.0	0.7	5.0	0.7	9.2	3.2	0.0	1.6	1.8
Leptospirosis	Cases	0	0	0	0	2	0	1	0	2	2	0	2	0	0	0	1	1	3	0	0	0
	Rate	4.5	0.2	0.2	0.2	4.7	2.0	5.3	0.0	4.6	3.2	4.8	4.8	0.0	0.3	2.5	1.5	18.4	2.0	3.6	0.0	3.6
Listeriosis	Cases	0	0	0	1	1	0	1	0	0	0	0	1	0	0	0	0	0	0	0	0	0
	Rate	0.0	0.8	0.9	0.4	1.4	0.0	1.0	4.3	0.9	0.0	1.6	1.8	0.7	0.3	0.0	0.0	0.0	0.4	0.0	1.1	0.0
Malaria	Cases	0	3	1	1	1	0	1	0	0	1	0	0	0	0	0	0	0	1	0	0	1
	Rate	0.0	1.7	1.6	3.9	1.1	0.0	1.4	0.0	0.9	1.3	0.0	0.0	0.0	1.0	2.5	1.5	6.1	0.8	0.0	0.0	0.9
Measles	Cases	0	0	1	0	0	0	1	0	0	0	0	0	0	0	0	0	0	1	0	0	0
	Rate	2.6	2.8	2.0	0.6	0.3	0.0	1.0	0.0	0.0	0.6	1.6	0.6	0.0	0.3	0.0	0.7	21.5	34.1	3.6	16.4	1.8
AYb]b[ cVcVWU'X]gYUgY	Cases	0	0	1	4	0	0	0	0	0	0	0	0	0	1	0	0	0	1	0	0	0
	Rate	3.9	1.1	2.7	4.4	2.5	4.9	3.9	13.0	2.8	3.9	1.6	6.0	3.5	3.5	2.5	0.0	3.1	2.4	0.0	2.1	3.6
Mumps	Cases	0	1	1	2	1	0	0	0	0	0	0	0	0	1	0	1	0	0	0	0	0
	Rate	1.9	1.1	1.1	1.0	2.2	1.0	2.4	0.0	1.8	0.6	0.0	0.0	2.1	3.1	5.0	1.5	3.1	2.8	5.4	0.0	0.0
Bcb'gYUgcbU' ]bZi YbnU'5'fk%B%&	Cases	0	1	0	1	1	0	0	0	0	0	0	0	0	0	0	0	0	0	0	0	0
	Rate	115.6	63.2	83.8	65.0	50.3	49.1	50.5	108.2	30.5	113.1	112.4	47.6	149.3	178.8	135.1	58.5	199.4	119.5	136.8	42.4	41.1
Paratyphoid fever	Cases	0	0	0	0	0	0	0	0	0	0	0	0	0	1	0	0	0	0	0	0	0
	Rate	0.0	0.9	1.1	0.4	0.6	2.0	0.0	0.0	0.0	0.0	0.0	0.0	1.4	0.7	2.5	0.0	0.0	0.6	0.0	0.0	0.0
Pertussis	Cases	0	6	6	7	14	1	7	2	2	0	0	7	7	15	0	3	0	12	3	1	2
	Rate	11.6	22.7	15.8	14.7	65.3	30.5	30.8	32.5	40.7	17.5	9.5	19.3	40.6	41.0	17.5	61.4	73.6	62.0	52.2	10.1	25.9
Rheumatic fever	Cases	0	2	1	2	1	0	0	1	0	2	0	0	0	0	0	0	0	0	0	0	0
	Rate	9.6	1.7	2.7	8.7	5.6	2.9	1.9	23.8	0.0	4.5	0.0	0.6	3.5	2.1	0.0	0.7	0.0	0.2	0.0	0.0	0.0
Rickettsial disease	Cases	0	0	0	1	0	0	0	0	0	0	0	0	0	0	0	0	0	0	0	0	0
	Rate	0.6	0.4	0.0	0.2	0.6	0.0	0.0	0.0	0.0	0.0	0.0	0.0	0.0	0.3	0.0	0.0	0.0	0.0	0.0	0.0	0.0
Rubella	Cases	0	0	0	0	0	0	0	0	0	0	0	0	0	0	0	0	0	0	0	0	0
	Rate	0.0	0.0	0.2	0.0	0.0	0.0	0.5	0.0	0.0	0.0	0.0	0.0	0.0	0.3	0.0	0.0	0.0	0.2	0.0	0.0	0.0
Salmonellosis	Cases	5	9	7	7	13	0	0	4	2	3	0	4	4	6	0	4	0	15	4	11	0
	Rate	21.2	17.2	23.4	17.2	29.2	20.6	16.4	71.4	19.4	34.4	19.0	17.5	25.2	19.1	45.0	27.8	27.6	29.9	63.0	39.3	42.9
Shigellosis	Cases	0	1	0	2	0	0	0	0	0	0	0	0	0	0	0	0	0	2	0	0	0
	Rate	1.9	4.5	4.3	5.6	1.9	0.0	1.4	2.2	0.0	0.6	0.0	0.6	2.8	2.4	2.5	1.5	3.1	1.6	1.8	1.6	2.7
Tuberculosis disease	Cases	0	9	9	8	1	1	1	0	0	0	0	1	1	1	1	2	0	3	0	0	0
	Rate	5.1	10.2	14.2	13.9	4.7	7.9	6.3	13.0	0.0	5.2	1.6	4.2	7.7	6.6	2.5	3.7	6.1	4.8	3.6	1.1	1.8
Typhoid fever	Cases	0	2	2	3	0	0	1	0	0	0	0	0	0	0	0	0	0	0	0	0	0
	Rate	0.0	1.1	2.0	3.1	0.3	0.0	0.5	0.0	0.0	0.0	0.0	0.0	0.0	1.0	0.0	0.0	0.0	0.4	0.0	0.0	0.0
VTEC/STEC infection	Cases	0	1	0	1	0	0	2	0	0	0	0	0	0	1	0	0	0	3	0	1	0
	Rate	3.9	1.5	3.6	1.9	6.4	4.9	4.3	8.7	11.1	2.6	0.0	1.2	1.4	1.7	2.5	1.5	3.1	3.6	3.6	2.7	1.8
Yersiniosis	Cases	0	8	5	6	0	2	0	0	1	4	1	1	3	3	0	1	3	9	0	0	0
	Rate	6.4	10.0	14.2	7.5	6.9	9.8	1.9	4.3	11.1	11.0	6.3	3.0	15.4	12.5	0.0	2.9	46.0	12.9	14.4	9.6	2.7

<sup>1</sup> These data are provisional

<sup>2</sup> Current rate is based on the cumulative total for the 12 months up to and including January 2010 expressed as cases per 100 000

<sup>3</sup> Further data are available from the local Medical Officer of Health

‘b] Uglj`Y`dbYi a cVcVWU'`X]gYUgY`VYWUa`Y`U`bch]Z]UV`Y`X]gYUgY`cb`h`Y`%+h`C`Vh`cVYf`&\$\$,

`H`YgY`h`H`U`g`UbX`f`UH`g`UFY`XYf]j`YX`Zfca`h`Y`9d]Gi`fj`fYdcfhXUH`Y`Ug`cddcgYX`h`h`Y`YUf`Y]gh`Uj`Uj`UV`Y`XUH`i`gYX`]b`h`Y`a`Yb]b[`cVcVWU'`X]gYUgY`gYVh]cb`c`ZH`jg`fYdcfh

`Bcb]`gYUgcbU'`]bZi`YbnU`fVUdUV`Y`c`Zh`fUbg`a`]gg]cb`VYhk`YYb`i`a`Ub`VY]b[`gk`VYWUa`Y`Ub`]bZYVh]ci`g`bch]Z]UV`Y`X]gYUgY`cb`&-`5dfj'`&\$-\$`-`"

Notifiable Disease Surveillance Data for the 12 months ending January-2010 by District Health Board

Disease	Cases for the 12 months ending January 2010 <sup>1 2</sup> by District Health Board <sup>3</sup>																					
	Total	Northland	Waitemata	Auckland	Counties Manukau	Waikato	Lakes	Bay of Plenty	Tairāwhiti	Taranaki	Hawke's Bay	Whanganui	MidCentral	Hutt Valley	Capital and Coast	Wairarapa	Nelson Marlborough	West Coast	Canterbury	South Canterbury	Otago	Southland
Campylobacteriosis	7223	193	914	791	682	669	203	332	32	241	341	141	235	366	716	71	154	44	583	99	246	170
Cryptosporidiosis	892	36	74	56	53	106	14	25	11	24	38	10	28	19	129	14	23	20	135	28	28	21
Dengue fever	111	3	16	22	27	4	2	4	2	1	4	1	4	2	11	0	0	1	6	0	1	0
Gastroenteritis	719	4	84	102	45	25	12	5	0	0	12	12	112	55	87	2	10	90	46	4	9	3
Giardiasis	1670	64	159	211	203	147	66	66	12	47	70	23	18	36	171	12	50	14	207	10	44	40
Haemophilus influenzae type b	14	1	3	0	1	5	0	1	0	0	0	0	1	1	0	0	0	0	1	0	0	0
Hazardous substances injury	11	1	2	1	0	0	0	0	0	0	5	0	1	0	1	0	0	0	0	0	0	0
Hepatitis A	44	0	3	9	7	4	0	2	0	0	4	0	3	2	3	0	0	0	6	0	0	1
Hepatitis B	54	3	6	12	7	1	1	4	1	1	1	1	2	0	2	2	2	2	4	0	2	0
Hepatitis C	29	1	1	4	2	0	0	0	0	4	0	0	1	2	2	2	0	0	7	1	2	0
Lead absorption	685	29	65	50	90	79	29	50	8	22	35	13	18	28	32	10	20	0	54	5	30	18
Legionellosis	80	2	16	8	9	1	0	9	1	0	4	0	1	0	2	2	1	3	16	0	3	2
Leptospirosis	87	7	1	1	1	17	2	11	0	5	5	3	8	0	1	1	2	6	10	2	0	4
Listeriosis	30	0	4	4	2	5	0	2	2	1	0	1	3	1	1	0	0	0	2	0	2	0
Malaria	58	0	9	7	19	4	0	3	0	1	2	0	0	0	3	1	2	2	4	0	0	1
Measles	252	4	15	9	3	1	0	2	0	0	1	1	1	0	1	0	1	7	171	2	31	2
Mumps	130	6	6	12	21	9	5	8	6	3	6	1	10	5	10	1	0	1	12	0	4	4
Paratyphoid fever	70	3	6	5	5	8	1	5	0	2	1	0	0	3	9	2	2	1	14	3	0	0
Pertussis	3671	180	334	372	313	181	50	105	50	33	174	71	79	213	515	54	80	65	600	76	80	46
Rheumatic fever	24	0	5	5	2	2	2	0	0	0	0	0	0	2	2	1	0	0	3	0	0	0
Rickettsial disease	1412	18	120	70	71	235	31	64	15	44	27	6	32	58	118	7	84	24	311	29	19	29
Rubella	137	15	9	12	42	20	3	4	11	0	7	0	1	5	6	0	1	0	1	0	0	0
Salmonellosis	7	1	2	0	1	2	0	0	0	0	0	0	0	0	1	0	0	0	0	0	0	0
Shigellosis	4	0	0	1	0	0	0	1	0	0	0	0	0	0	1	0	0	0	1	0	0	0
Tuberculosis disease	1082	33	91	104	83	105	21	34	33	21	53	12	29	36	55	18	38	9	150	35	74	48
Typhoid fever	116	3	24	19	27	7	0	3	1	0	1	0	1	4	7	1	2	1	8	1	3	3
VTEC/STEC infection	320	8	54	63	67	17	8	13	6	0	8	1	7	11	19	1	5	2	24	2	2	2
Yersiniosis	37	0	6	9	15	1	0	1	0	0	0	0	0	0	3	0	0	0	2	0	0	0
Total	136	6	8	16	9	23	5	9	4	12	4	0	2	2	5	1	2	1	18	2	5	2
	412	10	53	63	36	25	10	4	2	12	17	4	5	22	36	0	4	15	65	8	18	3
	19882	635	2129	2123	1894	1728	474	775	203	479	826	309	615	887	1960	206	494	308	2491	312	626	408

<sup>1</sup> These data are provisional

<sup>2</sup> Further data are available from the local Medical Officer of Health

<sup>3</sup> These totals are derived from the EpiSurv report date as opposed to the earliest available date used in the meningococcal disease section

“b] Uglj Y`dbYi a cVtVWU`X]gYUgY`VYVWla Y`U`bch]Z]UV`Y`X]gYUgY`cb`h`Y`%+h`C`WtVYf`&\$\$,`h`Y`gY`hc`HJ`g`UbX`fUH`g`UFY`XYf]j`YX`Zfca`h`Y`9d]Gi`fj`fYdcfhXUH`Ug`cddcgYX`hc`h`Y`YUf`Y]ghUj`Uj`UV`Y`XUH`i`gYX`]b`h`Y`a`Yb]b[`cVtVWU`X]gYUgY`gYVW]cb`cZ`h`Jg`fYdcfh`Bcb]`gYUgcbU`]bZi`YbnU`fWdUV`Y`cZ`fUbg`a`Jgg]cb`VYhk`YYb`\\i`a`Ub`VY]b[`gE`VYVWla`Y`Ub`]bZ`VW]ci`g`bch]Z]UV`Y`X]gYUgY`cb`&-`5df]`&\$\$-`”



National Notifiable Disease Surveillance Data January 2010

Disease	Current Year - 2010 <sup>1</sup>			Previous Year - 2009		
	January 2010 Cases	Cumulative total since 1 January	Current 12 Month Rate <sup>2</sup>	January 2009 Cases	Cumulative total since 1 January	Current 12 Month Rate <sup>2</sup>
Campylobacteriosis	839	839	167.4	791	791	159.1
Cryptosporidiosis	68	68	20.7	30	30	18.0
Dengue fever	1	1	2.6	30	30	3.2
Gastroenteritis <sup>3</sup>	41	41	16.7	37	37	15.4
Giardiasis	153	153	38.7	123	123	39.0
Haemophilus influenzae type b	3	3	0.3	0	0	0.1
Hepatitis A	4	4	1.0	4	4	2.0
<YdUh]hg`6	5	5	1.3	6	6	0.9
<YdUh]hg`7	1	1	0.7	4	4	0.6
⊔j Ug]j Y`dbYi a cVt`VVU`X]gYUgY	27	27	15.9	46	46	4.1
Lead absorption	8	8	8.5	11	11	7.4
Legionellosis	15	15	1.9	14	14	1.9
Leptospirosis	14	14	2.0	4	4	2.7
Listeriosis	4	4	0.7	2	2	0.6
Malaria	10	10	1.3	2	2	0.9
Measles	3	3	5.8	4	4	0.4
A Yb]b[ cVt`VVU`X]gYUgY	7	7	3.0	10	10	2.8
Mumps	7	7	1.6	0	0	1.5
Bcb`gYUgcbU`]bZi YbnU`5`fk`%B`%&`	3	3	85.1	0	0	0.0
Paratyphoid fever	1	1	0.6	2	2	0.6
Pertussis	95	95	32.7	79	79	11.3
Rheumatic fever	9	9	3.2	12	12	3.8
Rickettsial disease	1	1	0.2	0	0	0.2
Salmonellosis	98	98	25.1	145	145	30.3
Shigellosis	5	5	2.7	8	8	2.6
Tuberculosis disease	38	38	7.4	25	25	6.9
Typhoid fever	8	8	0.9	6	6	0.8
VTEC/STEC infection	9	9	3.2	16	16	3.0
Yersiniosis	47	47	9.5	67	67	12.0

<sup>1</sup> These data are provisional

<sup>2</sup> Rate is based on the cumulative total for the current year (12 months up to and including January 2010) or the previous year (12 months up to and including January 2009), expressed as cases per 100 000

<sup>3</sup> Cases of gastroenteritis from a common source or foodborne intoxication

`C b`mUW`hY`WUgYg`cZ`h`jg`X]gYUgY`UFY`W`ffYbhmbch]Z]UV`Y`  
`⊔j Ug]j Y`dbYi a cVt`VVU`X]gYUgY`VYVWa`Y`U`bch]Z]UV`Y`X]gYUgY`cb`h`Y`%+h`C`Vt`VYf`&\$\$`  
`h`Y`gY`hc`HJ`g`UbX`fUH`g`UFY`XYf]j`YX`Zfca`h`Y`9d]Gi`fj`fYdcfhXUH`Ug`cddcgYX`hc`h`Y`YUf`]YghUj`Uj`UV`Y`XUH`i`gYX`]b`h`Y`  
a`Yb]b[ cVt`VVU`X]gYUgY`gYV]cb`cZ`h`jg`fYdcfh`  
`Bcb!`gYUgcbU`]bZi`YbnU`fVUdUV`Y`cZ`f`Ubg`a`jgg]cb`VYhk`YYb`\\i`a`Ub`VY]b[`g`VYVWa`Y`Ub`]bZYV]ci`g`bch]Z]UV`Y`X]gYUgY`cb`  
&-`5df]`&\$\$`-`"

Other notifiable infectious disease reported in January: Cholera (1) , Paralytic shellfish poisoning (3) , Ross River virus infection (1) , Toxic shellfish poisoning (3)