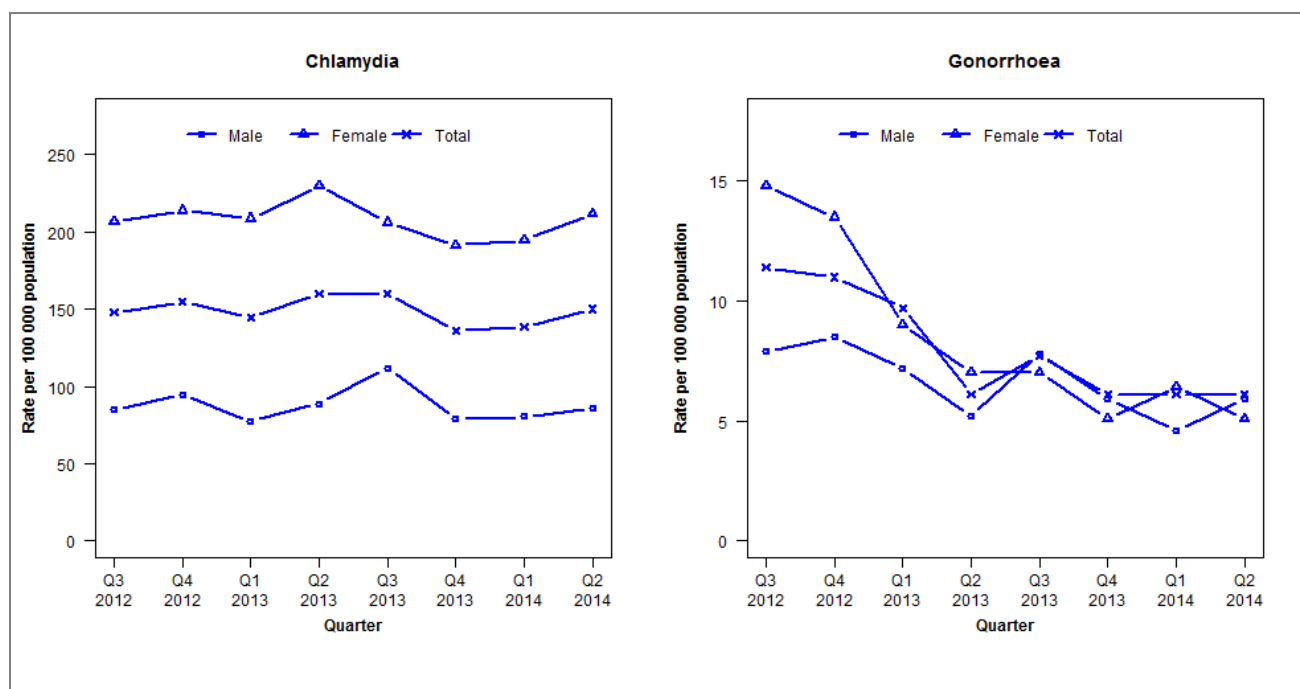


## Laboratory surveillance of chlamydia and gonorrhoea: April - June 2014

Quarterly chlamydia and gonorrhoea rates (female, male and total population), July 2012 to June 2014



Denominator = Statistics New Zealand mid-year population estimates

Note: New data processing methods introduced from Q1 2013 allow for exclusion of repeat tests.

### Number of lab confirmed chlamydia cases (female, male and total population) and number of tests per 100 000 population, July 2012 to June 2014

	Q3 2012	Q4 2012	Q1 2013	Q2 2013	Q3 2013	Q4 2013	Q1 2014	Q2 2014
<b>Number of lab-confirmed cases<sup>1</sup></b>	455	476	448	496	495	421	429	465
<b>Female</b>	321	332	326	359	322	299	304	331
<b>Male</b>	129	144	118	136	171	121	123	131
<b>Tests per 100 000 population<sup>2</sup></b>	2302	2172	2199	2363	2467	2169	2270	2355

<sup>1</sup>Total includes cases where sex is not reported

<sup>2</sup>Denominator = Statistics New Zealand mid-year population estimates

### Number of lab confirmed gonorrhoea cases (female, male and total population) and number of tests per 100 000 population, July 2012 to June 2014

	Q3 2012	Q4 2012	Q1 2013	Q2 2013	Q3 2013	Q4 2013	Q1 2014	Q2 2014
<b>Number of lab-confirmed cases<sup>1</sup></b>	35	34	30	19	24	19	19	19
<b>Female</b>	23	21	14	11	11	8	10	8
<b>Male</b>	12	13	11	8	12	9	7	9
<b>Tests per 100 000 population<sup>2</sup></b>	2302	2172	2290	2448	2549	2232	2328	2413

<sup>1</sup>Total includes cases where sex is not reported

<sup>2</sup>Denominator = Statistics New Zealand mid-year population estimates