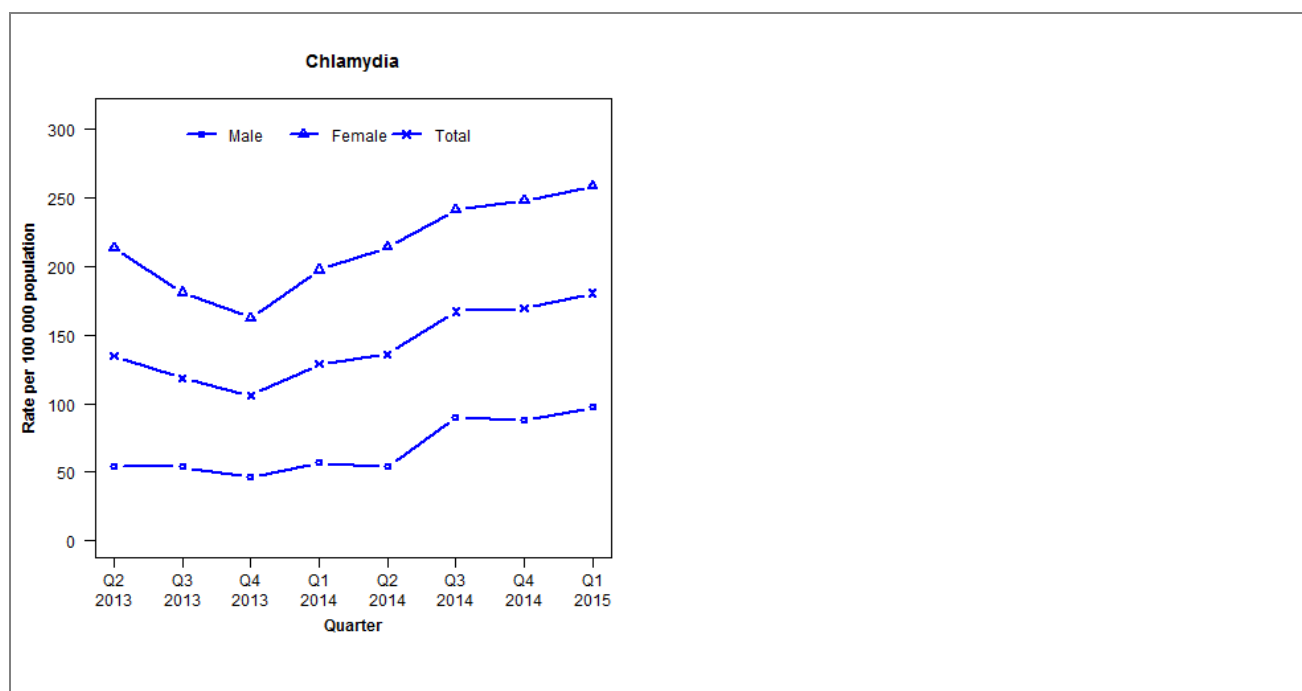


Laboratory surveillance of chlamydia and gonorrhoea: January - March 2015

Quarterly chlamydia and gonorrhoea rates (female, male and total population), Apr 2013 to Mar 2015



Denominator = Statistics New Zealand mid-year population estimates

Note: Data processing methods allow for exclusion of repeat tests. Additional 2014 data received has been included and may have impacted slightly on the counts and rates produced. Gonorrhoea rates are not presented as data were incomplete in 2013 and 2014.

Number of lab confirmed chlamydia cases (female, male and total population) and number of tests per 100 000 population, April 2013 to March 2015

	Q2 2013	Q3 2013	Q4 2013	Q1 2014	Q2 2014	Q3 2014	Q4 2014	Q1 2015
Number of lab-confirmed cases¹	214	188	168	214	226	278	282	300
<i>Female</i>	172	146	131	168	182	205	211	220
<i>Male</i>	42	42	36	46	44	73	71	79
Tests per 100 000 population²	1462	1472	1363	1387	1604	1724	1765	1892

¹Total includes cases where sex is not reported

²Denominator = Statistics New Zealand mid-year population estimates

Number of lab confirmed gonorrhoea cases (female, male and total population) and number of tests per 100 000 population, April 2013 to March 2015

	Q2 2013	Q3 2013	Q4 2013	Q1 2014	Q2 2014	Q3 2014	Q4 2014	Q1 2015
Number of lab-confirmed cases¹	*	*	*	*	*	*	*	26
<i>Female</i>	*	*	*	*	*	*	*	17
<i>Male</i>	*	*	*	*	*	*	*	9
Tests per 100 000 population²	*	*	*	*	*	*	*	2640

¹Total includes cases where sex is not reported

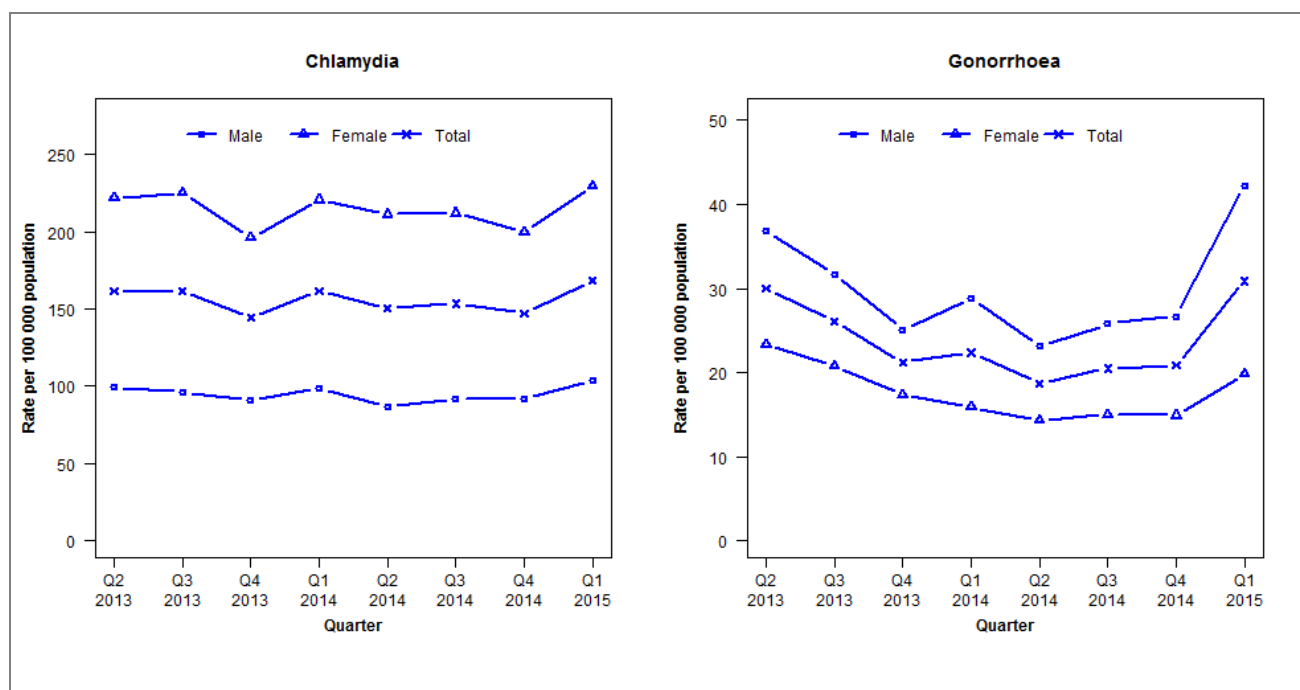
²Denominator = Statistics New Zealand mid-year population estimates

AUCKLAND REGION

Auckland, Counties Manukau and Waitemata DHBs

Laboratory surveillance of chlamydia and gonorrhoea: January - March 2015

Quarterly chlamydia and gonorrhoea rates (female, male and total population), Apr 2013 to Mar 2015



Denominator = Statistics New Zealand mid-year population estimates

Note: Data processing methods allow for exclusion of repeat tests. Data not received from Waitemata DHB for all quarters in 2013.

Number of lab confirmed chlamydia cases (female, male and total population) and number of tests per 100 000 population, April 2013 to March 2015

	Q2 2013	Q3 2013	Q4 2013	Q1 2014	Q2 2014	Q3 2014	Q4 2014	Q1 2015
Number of lab-confirmed cases¹	2497	2499	2234	2492	2326	2369	2270	2598
<i>Female</i>	1740	1768	1539	1737	1665	1670	1575	1809
<i>Male</i>	755	731	693	748	655	692	694	786
Tests per 100 000 population²	2442	2555	2366	2534	2554	2634	2550	2737

¹Total includes cases where sex is not reported

²Denominator = Statistics New Zealand mid-year population estimates

Number of lab confirmed gonorrhoea cases (female, male and total population) and number of tests per 100 000 population, April 2013 to March 2015

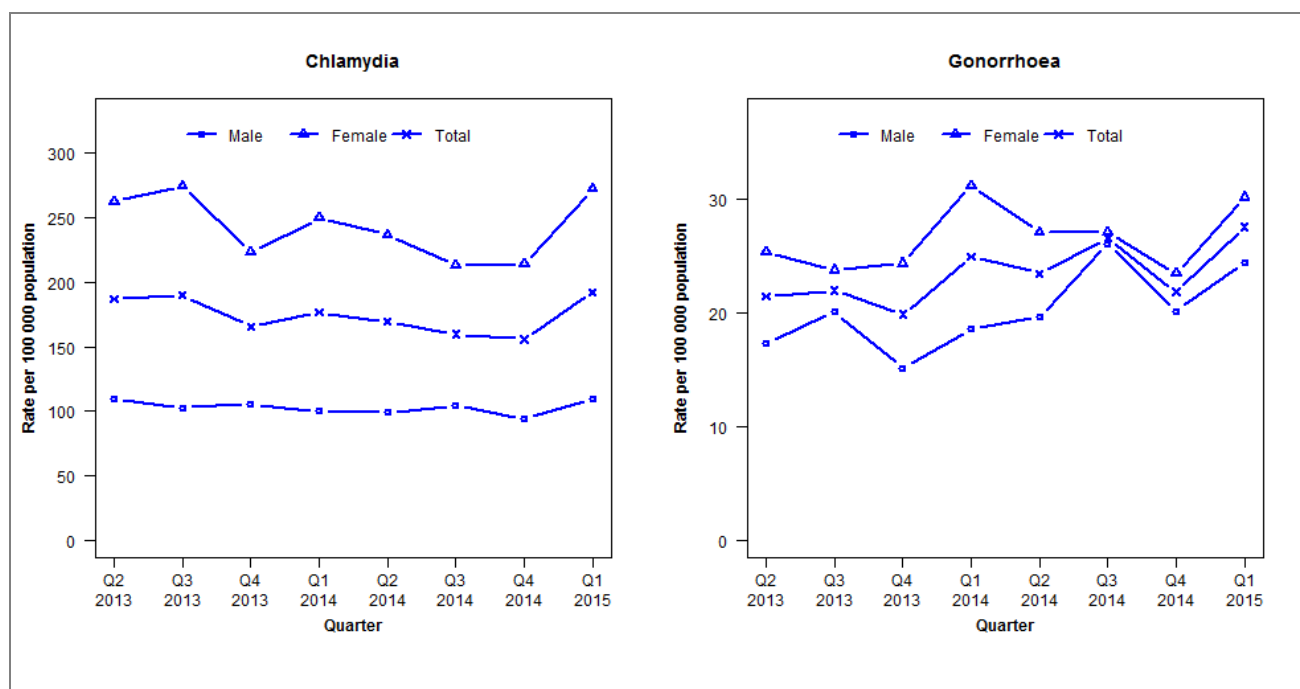
	Q2 2013	Q3 2013	Q4 2013	Q1 2014	Q2 2014	Q3 2014	Q4 2014	Q1 2015
Number of lab-confirmed cases¹	464	404	328	345	288	316	322	477
<i>Female</i>	183	163	136	125	113	118	117	157
<i>Male</i>	280	241	191	218	175	195	202	319
Tests per 100 000 population²	2800	2877	2648	2841	2795	2898	2819	3030

¹Total includes cases where sex is not reported

²Denominator = Statistics New Zealand mid-year population estimates

Laboratory surveillance of chlamydia and gonorrhoea: January - March 2015

Quarterly chlamydia and gonorrhoea rates (female, male and total population), Apr 2013 to Mar 2015



Denominator = Statistics New Zealand mid-year population estimates

Note: Data processing methods allow for exclusion of repeat tests. Additional 2014 data received has been included and may have impacted slightly on the counts and rates produced.

Number of lab confirmed chlamydia cases (female, male and total population) and number of tests per 100 000 population, April 2013 to March 2015

	Q2 2013	Q3 2013	Q4 2013	Q1 2014	Q2 2014	Q3 2014	Q4 2014	Q1 2015
Number of lab-confirmed cases¹	697	707	617	677	649	612	597	737
<i>Female</i>	495	518	422	488	463	416	419	532
<i>Male</i>	202	189	194	188	186	196	177	205
Tests per 100 000 population²	2000	2165	1960	2025	2044	2072	1956	2194

¹Total includes cases where sex is not reported

²Denominator = Statistics New Zealand mid-year population estimates

Number of lab confirmed gonorrhoea cases (female, male and total population) and number of tests per 100 000 population, April 2013 to March 2015

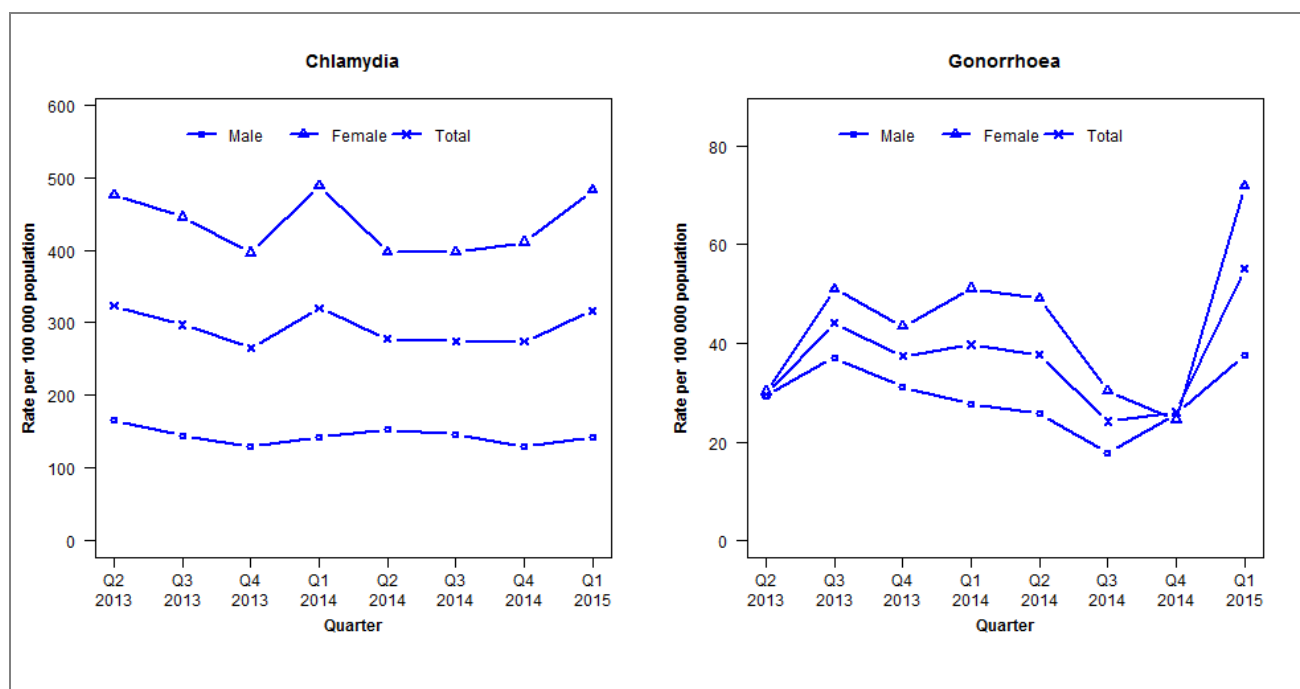
	Q2 2013	Q3 2013	Q4 2013	Q1 2014	Q2 2014	Q3 2014	Q4 2014	Q1 2015
Number of lab-confirmed cases¹	80	82	74	96	90	102	84	106
<i>Female</i>	48	45	46	61	53	53	46	59
<i>Male</i>	32	37	28	35	37	49	38	46
Tests per 100 000 population²	2580	2900	2508	2502	2515	2525	2401	2620

¹Total includes cases where sex is not reported

²Denominator = Statistics New Zealand mid-year population estimates

Laboratory surveillance of chlamydia and gonorrhoea: January - March 2015

Quarterly chlamydia and gonorrhoea rates (female, male and total population), Apr 2013 to Mar 2015



Denominator = Statistics New Zealand mid-year population estimates

Note: Data processing methods allow for exclusion of repeat tests. Additional 2014 data received has been included and may have impacted slightly on the counts and rates produced. NAAT Gonorrhoea testing introduced for Pathlab Rotorua 1 July 2013.

Number of lab confirmed chlamydia cases (female, male and total population) and number of tests per 100 000 population, April 2013 to March 2015

	Q2 2013	Q3 2013	Q4 2013	Q1 2014	Q2 2014	Q3 2014	Q4 2014	Q1 2015
Number of lab-confirmed cases¹	337	310	277	331	287	284	283	327
<i>Female</i>	252	236	210	258	210	210	217	255
<i>Male</i>	85	74	66	72	77	74	65	72
Tests per 100 000 population²	2873	2801	2602	2858	2661	2782	2654	2982

¹Total includes cases where sex is not reported

²Denominator = Statistics New Zealand mid-year population estimates

Number of lab confirmed gonorrhoea cases (female, male and total population) and number of tests per 100 000 population, April 2013 to March 2015

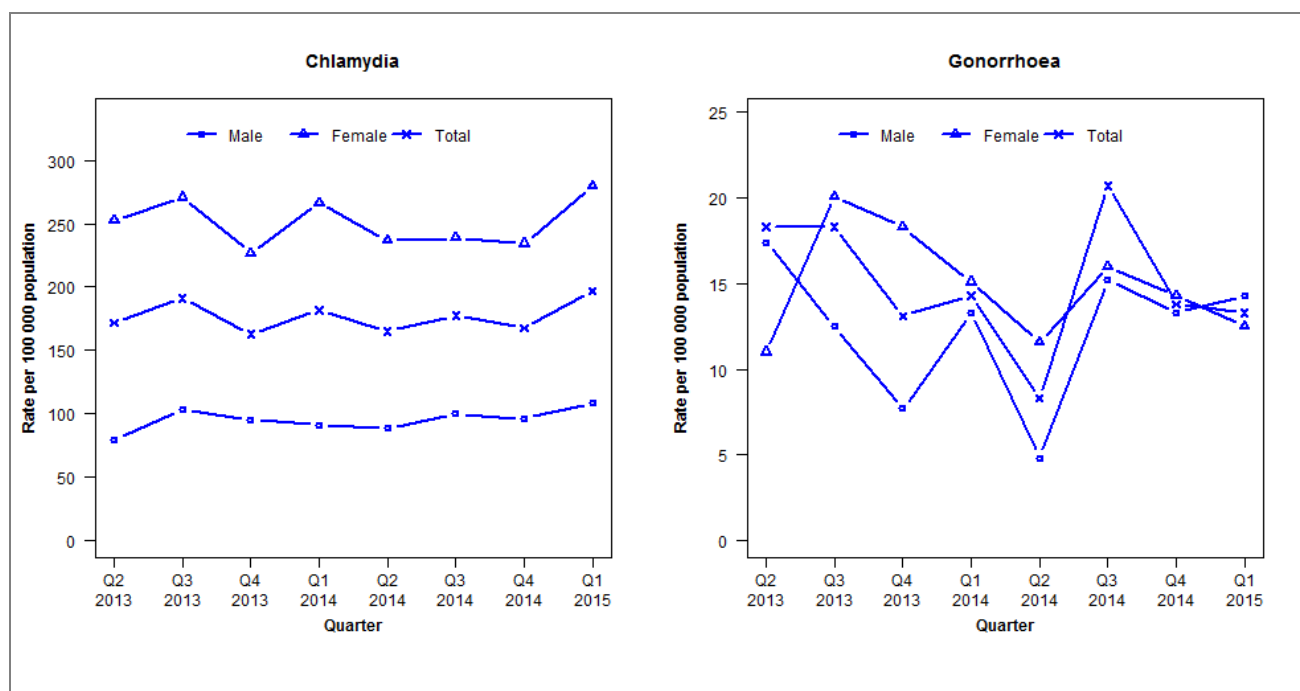
	Q2 2013	Q3 2013	Q4 2013	Q1 2014	Q2 2014	Q3 2014	Q4 2014	Q1 2015
Number of lab-confirmed cases¹	31	46	39	41	39	25	27	57
<i>Female</i>	16	27	23	27	26	16	13	38
<i>Male</i>	15	19	16	14	13	9	13	19
Tests per 100 000 population²	2089	3048	2688	2899	2671	2791	2665	3000

¹Total includes cases where sex is not reported

²Denominator = Statistics New Zealand mid-year population estimates

Laboratory surveillance of chlamydia and gonorrhoea: January - March 2015

Quarterly chlamydia and gonorrhoea rates (female, male and total population), Apr 2013 to Mar 2015



Denominator = Statistics New Zealand mid-year population estimates

Note: Data processing methods allow for exclusion of repeat tests. Additional 2014 data received has been included and may have impacted slightly on the counts and rates produced. NAAT (nucleic acid amplification testing) for gonorrhoea testing was introduced in Q3 2013.

Number of lab confirmed chlamydia cases (female, male and total population) and number of tests per 100 000 population, April 2013 to March 2015

	Q2 2013	Q3 2013	Q4 2013	Q1 2014	Q2 2014	Q3 2014	Q4 2014	Q1 2015
Number of lab-confirmed cases¹	366	407	347	395	359	386	364	428
<i>Female</i>	276	296	248	299	266	268	263	314
<i>Male</i>	82	107	99	96	93	105	101	114
Tests per 100 000 population²	1976	2027	2003	2117	1983	2092	2002	2161

¹Total includes cases where sex is not reported

²Denominator = Statistics New Zealand mid-year population estimates

Number of lab confirmed gonorrhoea cases (female, male and total population) and number of tests per 100 000 population, April 2013 to March 2015

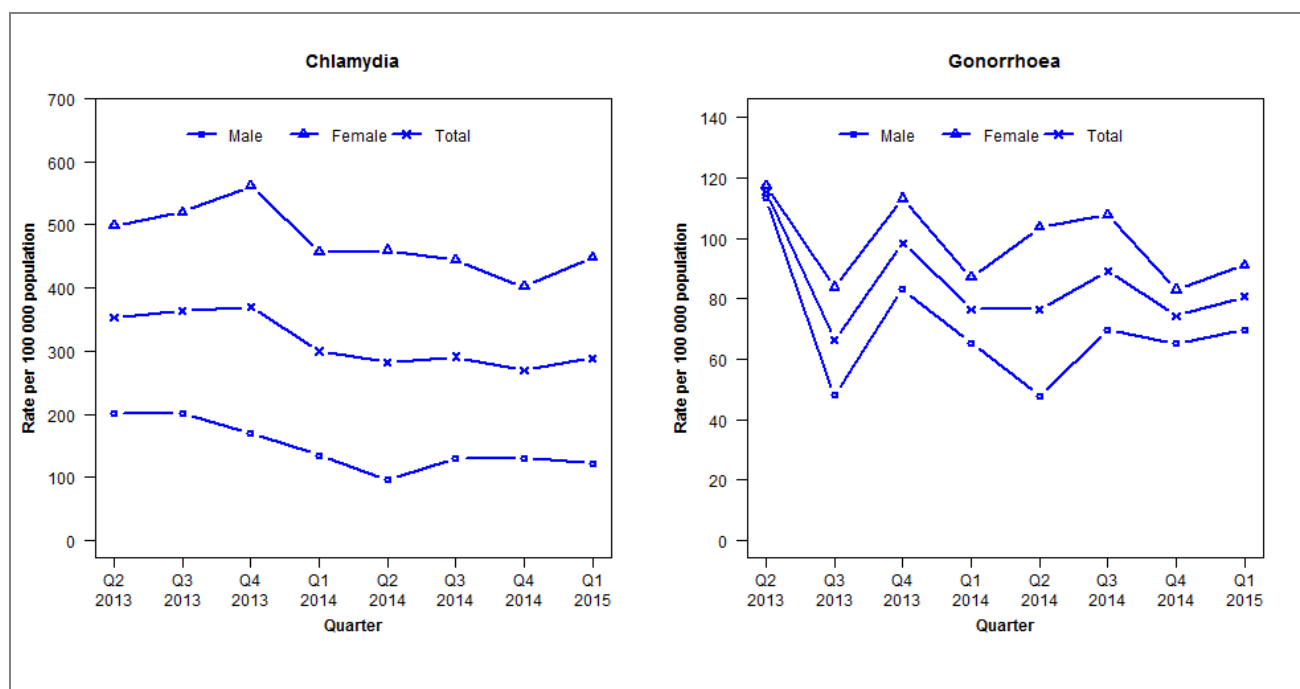
	Q2 2013	Q3 2013	Q4 2013	Q1 2014	Q2 2014	Q3 2014	Q4 2014	Q1 2015
Number of lab-confirmed cases¹	39	39	28	31	18	45	30	29
<i>Female</i>	12	22	20	17	13	18	16	14
<i>Male</i>	18	13	8	14	5	16	14	15
Tests per 100 000 population²	1393	2011	2153	2173	1984	2093	2006	2167

¹Total includes cases where sex is not reported

²Denominator = Statistics New Zealand mid-year population estimates

Laboratory surveillance of chlamydia and gonorrhoea: January - March 2015

Quarterly chlamydia and gonorrhoea rates (female, male and total population), Apr 2013 to Mar 2015



Denominator = Statistics New Zealand mid-year population estimates

Note: Data processing methods allow for exclusion of repeat tests.

Number of lab confirmed chlamydia cases (female, male and total population) and number of tests per 100 000 population, April 2013 to March 2015

	Q2 2013	Q3 2013	Q4 2013	Q1 2014	Q2 2014	Q3 2014	Q4 2014	Q1 2015
Number of lab-confirmed cases¹	165	170	173	141	133	137	127	136
<i>Female</i>	119	124	134	110	111	107	97	108
<i>Male</i>	46	46	39	31	22	30	30	28
Tests per 100 000 population²	2420	2525	2480	2255	2205	2349	2134	2083

¹Total includes cases where sex is not reported

²Denominator = Statistics New Zealand mid-year population estimates

Number of lab confirmed gonorrhoea cases (female, male and total population) and number of tests per 100 000 population, April 2013 to March 2015

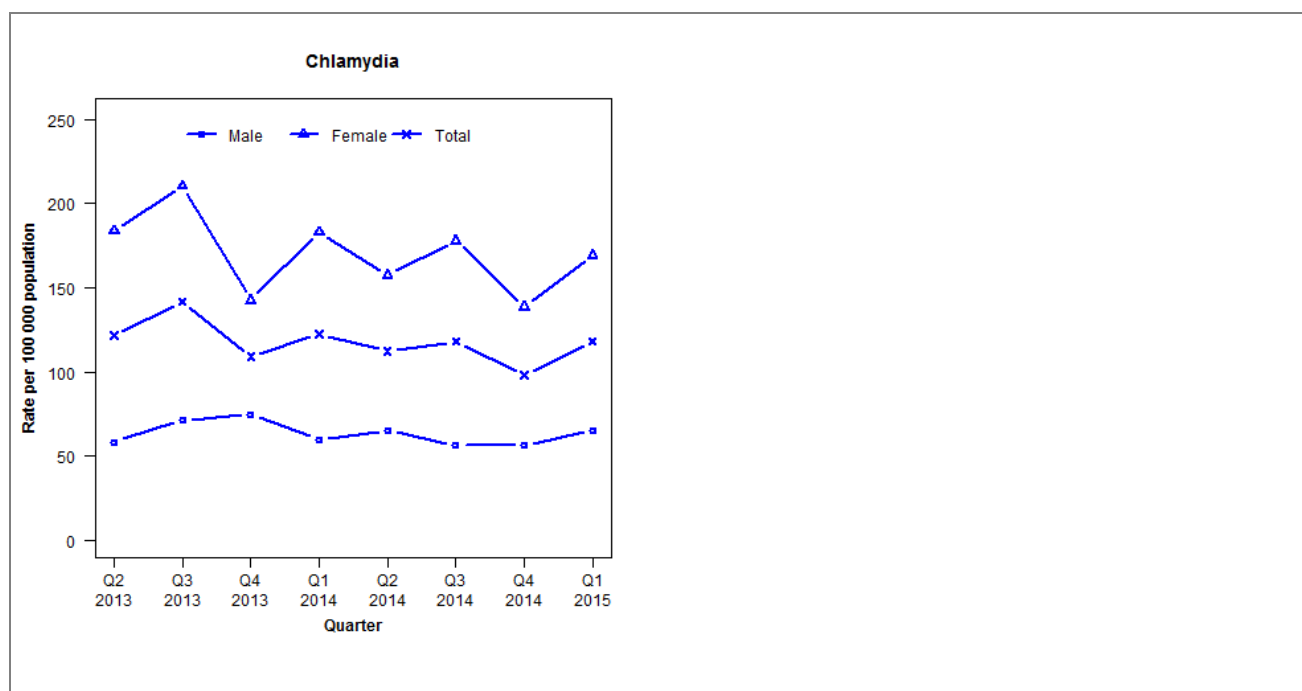
	Q2 2013	Q3 2013	Q4 2013	Q1 2014	Q2 2014	Q3 2014	Q4 2014	Q1 2015
Number of lab-confirmed cases¹	54	31	46	36	36	42	35	38
<i>Female</i>	28	20	27	21	25	26	20	22
<i>Male</i>	26	11	19	15	11	16	15	16
Tests per 100 000 population²	2390	2499	2354	2260	2268	2383	2224	2202

¹Total includes cases where sex is not reported

²Denominator = Statistics New Zealand mid-year population estimates

Laboratory surveillance of chlamydia and gonorrhoea: January - March 2015

Quarterly chlamydia and gonorrhoea rates (female, male and total population), Apr 2013 to Mar 2015



Denominator = Statistics New Zealand mid-year population estimates

Note: Data processing methods allow for exclusion of repeat tests. Gonorrhoea rates are not presented as there are fewer than five cases in many quarters.

Number of lab confirmed chlamydia cases (female, male and total population) and number of tests per 100 000 population, April 2013 to March 2015

	Q2 2013	Q3 2013	Q4 2013	Q1 2014	Q2 2014	Q3 2014	Q4 2014	Q1 2015
Number of lab-confirmed cases¹	135	157	121	141	129	136	113	136
<i>Female</i>	103	118	80	107	92	104	81	99
<i>Male</i>	32	39	41	34	37	32	32	37
Tests per 100 000 population²	1989	2134	2011	2004	1956	2000	1893	1917

¹Total includes cases where sex is not reported

²Denominator = Statistics New Zealand mid-year population estimates

Number of lab confirmed gonorrhoea cases (female, male and total population) and number of tests per 100 000 population, April 2013 to March 2015

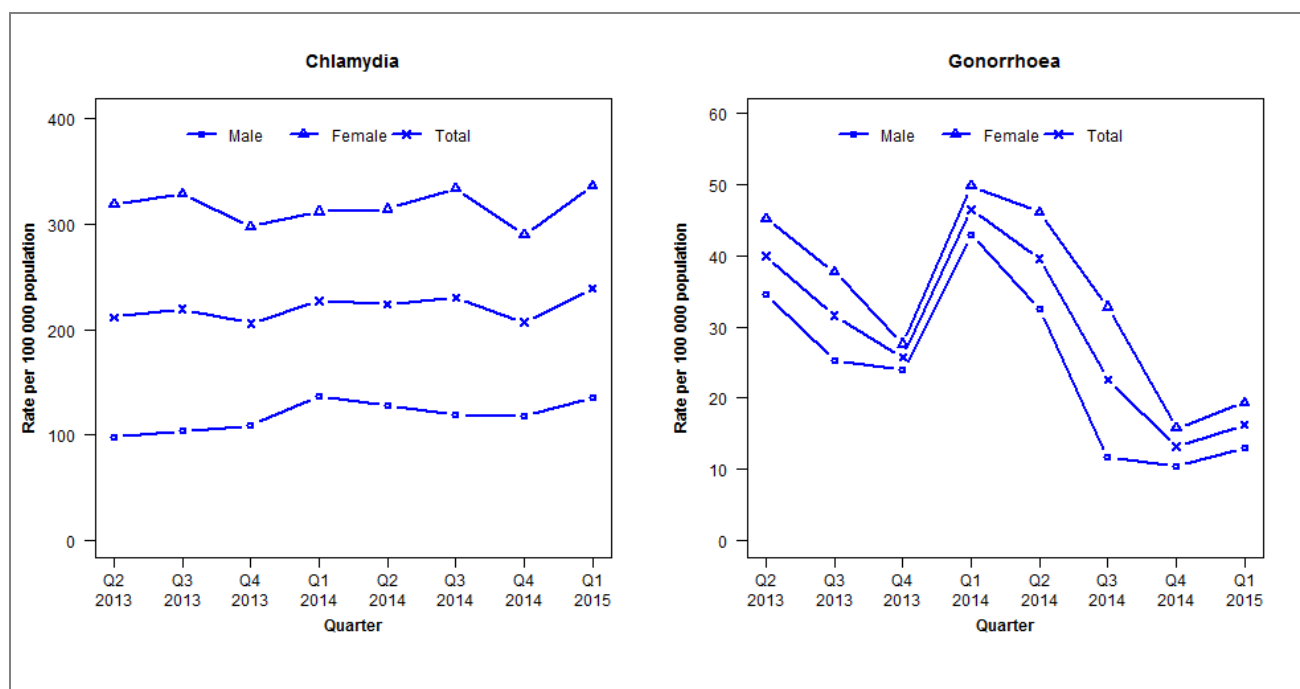
	Q2 2013	Q3 2013	Q4 2013	Q1 2014	Q2 2014	Q3 2014	Q4 2014	Q1 2015
Number of lab-confirmed cases¹	3	0	0	5	11	10	1	0
<i>Female</i>	2	0	0	2	5	6	0	0
<i>Male</i>	1	0	0	1	6	4	1	0
Tests per 100 000 population²	2360	2555	2397	2473	2398	2524	2319	2346

¹Total includes cases where sex is not reported

²Denominator = Statistics New Zealand mid-year population estimates

Laboratory surveillance of chlamydia and gonorrhoea: January - March 2015

Quarterly chlamydia and gonorrhoea rates (female, male and total population), Apr 2013 to Mar 2015



Denominator = Statistics New Zealand mid-year population estimates

Note: Data processing methods allow for exclusion of repeat tests.

Number of lab confirmed chlamydia cases (female, male and total population) and number of tests per 100 000 population, April 2013 to March 2015

	Q2 2013	Q3 2013	Q4 2013	Q1 2014	Q2 2014	Q3 2014	Q4 2014	Q1 2015
Number of lab-confirmed cases¹	328	340	319	362	357	367	330	381
<i>Female</i>	254	262	237	257	259	275	239	277
<i>Male</i>	74	78	82	105	98	92	91	104
Tests per 100 000 population²	1942	2079	1929	1941	1918	1958	1839	2134

¹Total includes cases where sex is not reported

²Denominator = Statistics New Zealand mid-year population estimates

Number of lab confirmed gonorrhoea cases (female, male and total population) and number of tests per 100 000 population, April 2013 to March 2015

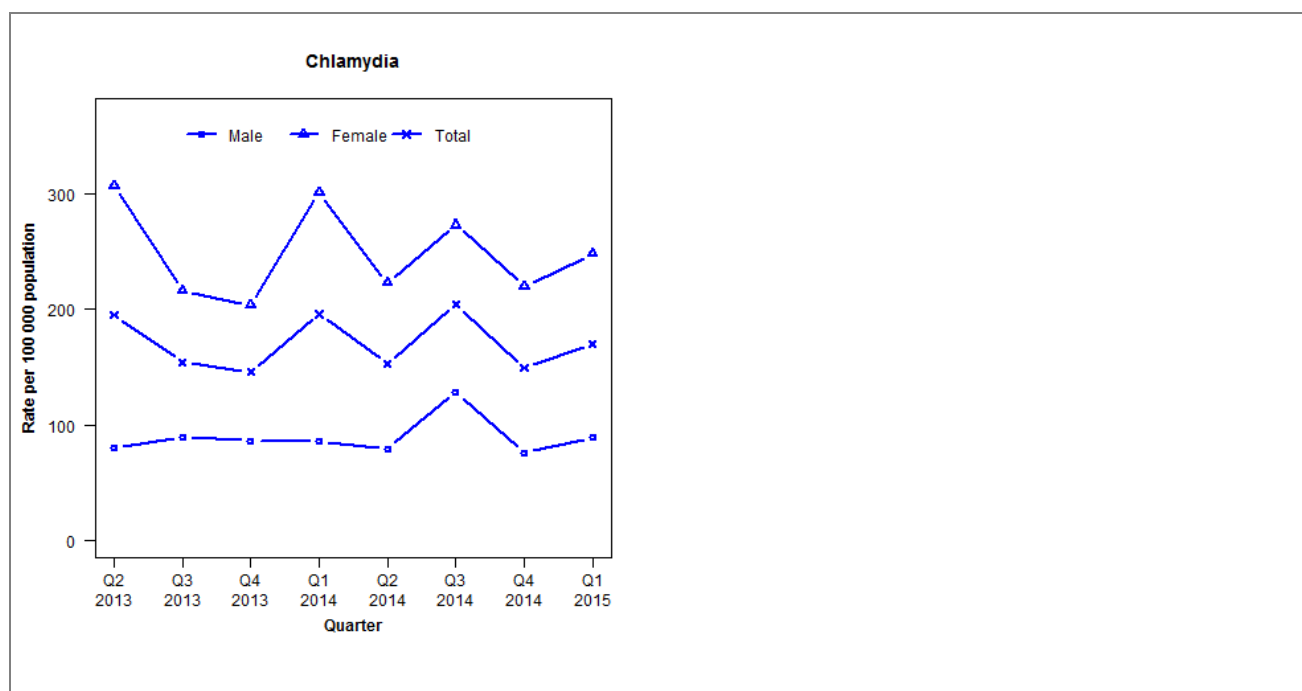
	Q2 2013	Q3 2013	Q4 2013	Q1 2014	Q2 2014	Q3 2014	Q4 2014	Q1 2015
Number of lab-confirmed cases¹	62	49	40	74	63	36	21	26
<i>Female</i>	36	30	22	41	38	27	13	16
<i>Male</i>	26	19	18	33	25	9	8	10
Tests per 100 000 population²	2390	2506	2317	2311	2265	2290	2160	2447

¹Total includes cases where sex is not reported

²Denominator = Statistics New Zealand mid-year population estimates

Laboratory surveillance of chlamydia and gonorrhoea: January - March 2015

Quarterly chlamydia and gonorrhoea rates (female, male and total population), Apr 2013 to Mar 2015



Denominator = Statistics New Zealand mid-year population estimates

Note: Data processing methods allow for exclusion of repeat tests. Gonorrhoea rates are not presented as there are fewer than five cases in some quarters. NAAT testing introduced in Q1 2014.

Number of lab confirmed chlamydia cases (female, male and total population) and number of tests per 100 000 population, April 2013 to March 2015

	Q2 2013	Q3 2013	Q4 2013	Q1 2014	Q2 2014	Q3 2014	Q4 2014	Q1 2015
Number of lab-confirmed cases¹	119	94	89	122	95	127	93	106
<i>Female</i>	95	67	63	96	71	87	70	79
<i>Male</i>	24	27	26	26	24	39	23	27
Tests per 100 000 population²	1621	1672	1576	1906	1808	1873	1722	1698

¹Total includes cases where sex is not reported

²Denominator = Statistics New Zealand mid-year population estimates

Number of lab confirmed gonorrhoea cases (female, male and total population) and number of tests per 100 000 population, April 2013 to March 2015

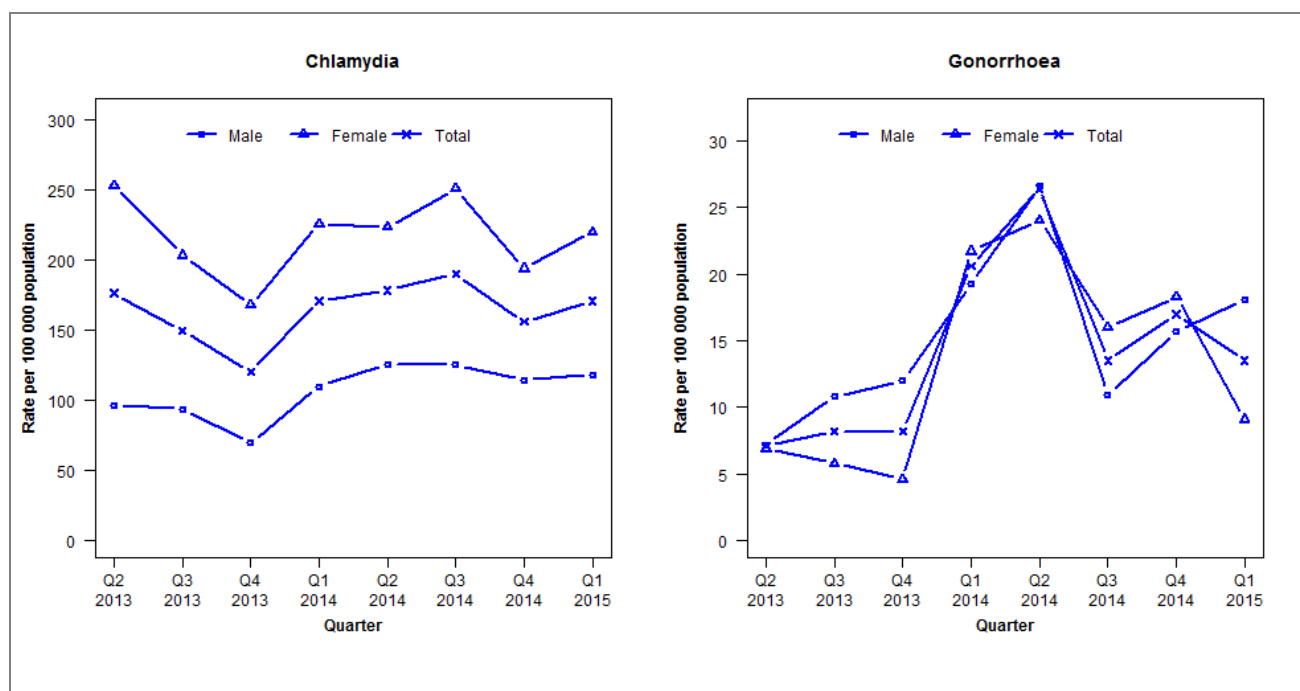
	Q2 2013	Q3 2013	Q4 2013	Q1 2014	Q2 2014	Q3 2014	Q4 2014	Q1 2015
Number of lab-confirmed cases¹	5	2	8	9	8	14	5	8
<i>Female</i>	1	0	4	6	3	8	3	4
<i>Male</i>	4	2	4	3	5	6	2	4
Tests per 100 000 population²	1060	1063	975	1627	1804	1881	1768	1744

¹Total includes cases where sex is not reported

²Denominator = Statistics New Zealand mid-year population estimates

Laboratory surveillance of chlamydia and gonorrhoea: January - March 2015

Quarterly chlamydia and gonorrhoea rates (female, male and total population), Apr 2013 to Mar 2015



Denominator = Statistics New Zealand mid-year population estimates

Note: Data processing procedures allow for exclusion of repeat tests. NAAT testing introduced in Q1 2014.

Number of lab confirmed chlamydia cases (female, male and total population) and number of tests per 100 000 population, April 2013 to March 2015

	Q2 2013	Q3 2013	Q4 2013	Q1 2014	Q2 2014	Q3 2014	Q4 2014	Q1 2015
Number of lab-confirmed cases¹	300	255	205	291	304	324	266	291
<i>Female</i>	220	177	146	198	196	220	170	193
<i>Male</i>	80	78	58	91	104	104	95	98
Tests per 100 000 population²	1752	1737	1564	1686	1772	1903	1744	1912

¹Total includes cases where sex is not reported

²Denominator = Statistics New Zealand mid-year population estimates

Number of lab confirmed gonorrhoea cases (female, male and total population) and number of tests per 100 000 population, April 2013 to March 2015

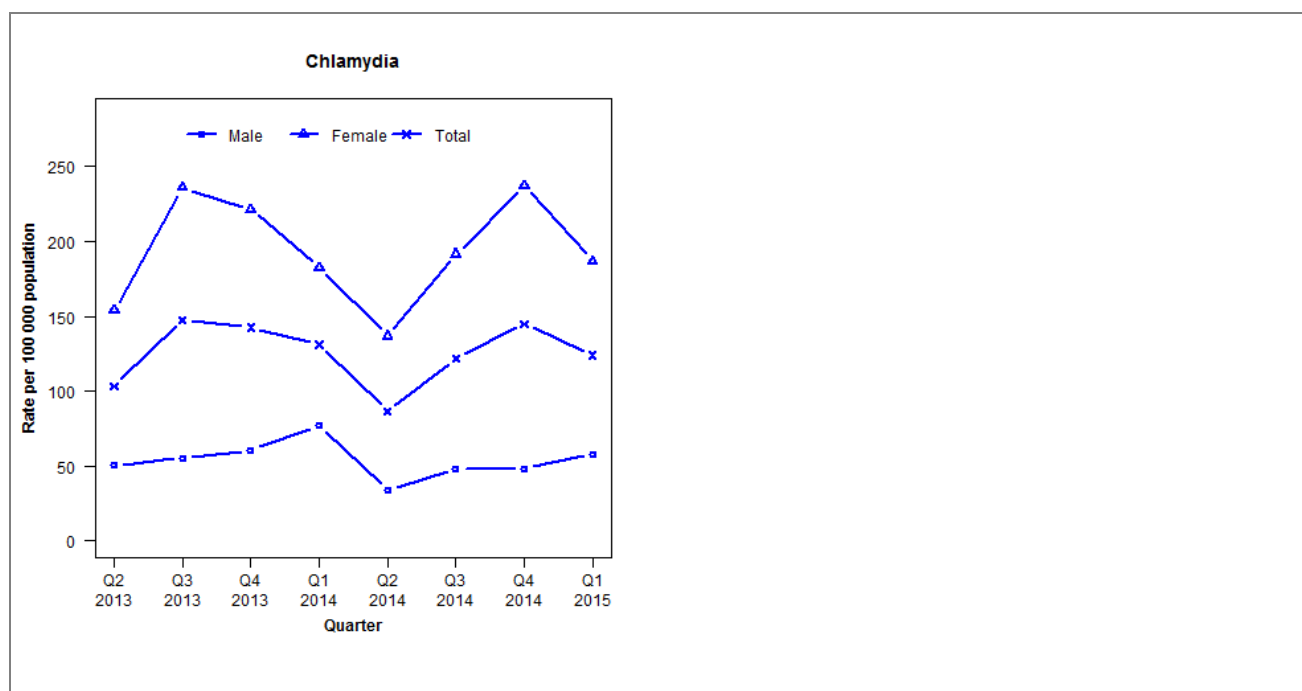
	Q2 2013	Q3 2013	Q4 2013	Q1 2014	Q2 2014	Q3 2014	Q4 2014	Q1 2015
Number of lab-confirmed cases¹	12	14	14	35	45	23	29	23
<i>Female</i>	6	5	4	19	21	14	16	8
<i>Male</i>	6	9	10	16	22	9	13	15
Tests per 100 000 population²	1474	1454	1276	1591	1809	1943	1794	1962

¹Total includes cases where sex is not reported

²Denominator = Statistics New Zealand mid-year population estimates

Laboratory surveillance of chlamydia and gonorrhoea: January - March 2015

Quarterly chlamydia and gonorrhoea rates (female, male and total population), Apr 2013 to Mar 2015



Denominator = Statistics New Zealand mid-year population estimates

Note: Data processing methods allow for exclusion of repeat tests. Gonorrhoea rates are not presented as there are fewer than five cases in many quarters.

Number of lab confirmed chlamydia cases (female, male and total population) and number of tests per 100 000 population, April 2013 to March 2015

	Q2 2013	Q3 2013	Q4 2013	Q1 2014	Q2 2014	Q3 2014	Q4 2014	Q1 2015
Number of lab-confirmed cases¹	42	60	58	56	37	52	62	53
<i>Female</i>	32	49	46	40	30	42	52	41
<i>Male</i>	10	11	12	16	7	10	10	12
Tests per 100 000 population²	1326	1523	1481	1422	1319	1476	1378	1404

¹Total includes cases where sex is not reported

²Denominator = Statistics New Zealand mid-year population estimates

Number of lab confirmed gonorrhoea cases (female, male and total population) and number of tests per 100 000 population, April 2013 to March 2015

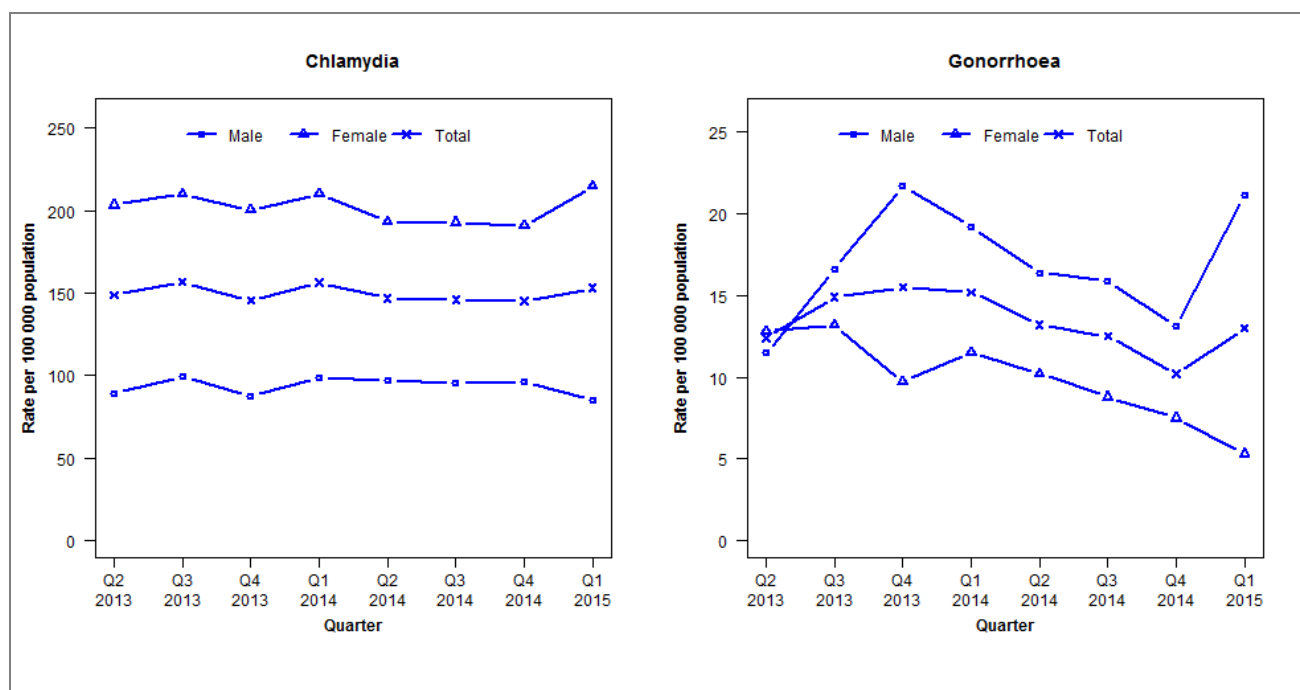
	Q2 2013	Q3 2013	Q4 2013	Q1 2014	Q2 2014	Q3 2014	Q4 2014	Q1 2015
Number of lab-confirmed cases¹	0	3	3	3	2	4	1	2
<i>Female</i>	0	2	2	1	1	1	1	1
<i>Male</i>	0	1	1	2	1	3	0	1
Tests per 100 000 population²	905	1090	1048	1172	1287	1441	1399	1434

¹Total includes cases where sex is not reported

²Denominator = Statistics New Zealand mid-year population estimates

Laboratory surveillance of chlamydia and gonorrhoea: January - March 2015

Quarterly chlamydia and gonorrhoea rates (female, male and total population), Apr 2013 to Mar 2015



Denominator = Statistics New Zealand mid-year population estimates

Note: Data processing methods allow for exclusion of repeat tests.

Number of lab confirmed chlamydia cases (female, male and total population) and number of tests per 100 000 population, April 2013 to March 2015

	Q2 2013	Q3 2013	Q4 2013	Q1 2014	Q2 2014	Q3 2014	Q4 2014	Q1 2015
Number of lab-confirmed cases¹	661	695	646	688	646	642	638	673
<i>Female</i>	461	476	454	475	437	436	431	486
<i>Male</i>	193	215	189	211	207	204	205	182
Tests per 100 000 population²	2269	2437	2323	2446	2445	2538	2387	2543

¹Total includes cases where sex is not reported²Denominator = Statistics New Zealand mid-year population estimates

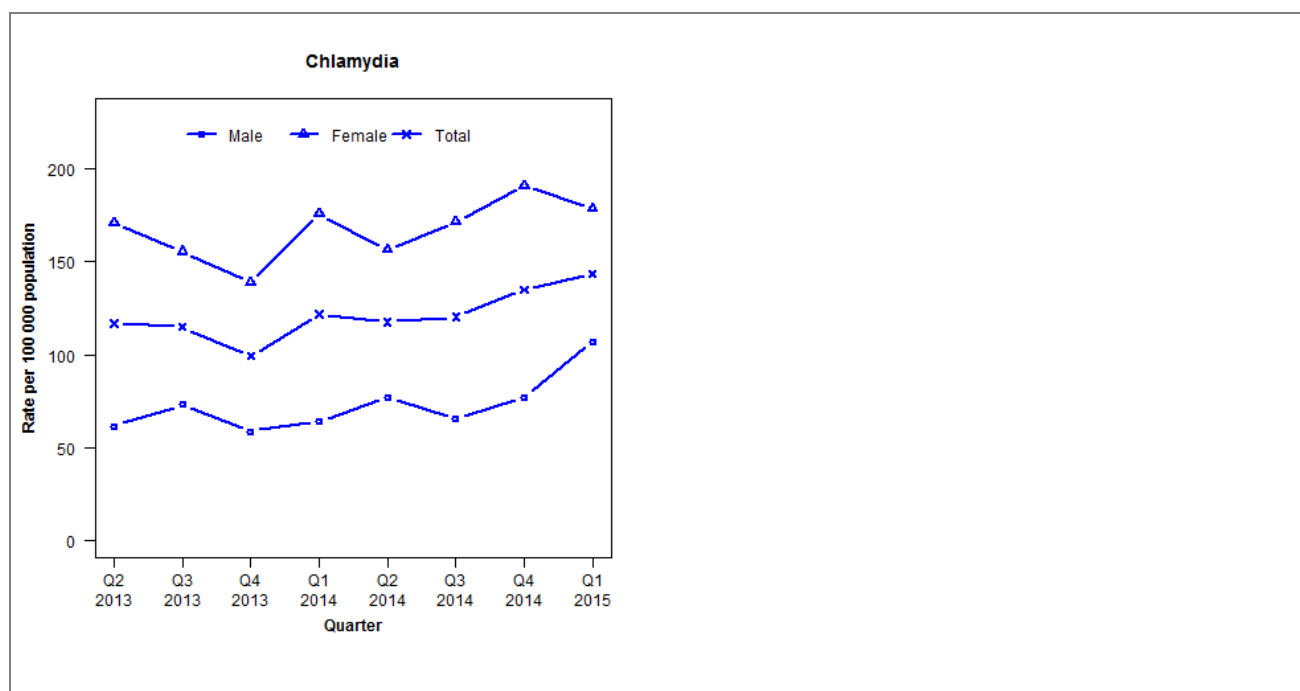
Number of lab confirmed gonorrhoea cases (female, male and total population) and number of tests per 100 000 population, April 2013 to March 2015

	Q2 2013	Q3 2013	Q4 2013	Q1 2014	Q2 2014	Q3 2014	Q4 2014	Q1 2015
Number of lab-confirmed cases¹	55	66	69	67	58	55	45	57
<i>Female</i>	29	30	22	26	23	20	17	12
<i>Male</i>	25	36	47	41	35	34	28	45
Tests per 100 000 population²	2264	2418	2231	2425	2433	2506	2350	2544

¹Total includes cases where sex is not reported²Denominator = Statistics New Zealand mid-year population estimates

Laboratory surveillance of chlamydia and gonorrhoea: January - March 2015

Quarterly chlamydia and gonorrhoea rates (female, male and total population), Apr 2013 to Mar 2015



Denominator = Statistics New Zealand mid-year population estimates

Note: Data processing procedures allow for exclusion of repeat tests. Gonorrhoea rates are not presented as there are fewer than five cases in many quarters.

Number of lab confirmed chlamydia cases (female, male and total population) and number of tests per 100 000 population, April 2013 to March 2015

	Q2 2013	Q3 2013	Q4 2013	Q1 2014	Q2 2014	Q3 2014	Q4 2014	Q1 2015
Number of lab-confirmed cases¹	165	162	140	174	168	172	193	205
<i>Female</i>	122	111	99	128	114	125	139	130
<i>Male</i>	43	51	41	45	54	46	54	75
Tests per 100 000 population²	1612	1679	1519	1684	1603	1601	1662	1714

¹Total includes cases where sex is not reported

²Denominator = Statistics New Zealand mid-year population estimates

Number of lab confirmed gonorrhoea cases (female, male and total population) and number of tests per 100 000 population, April 2013 to March 2015

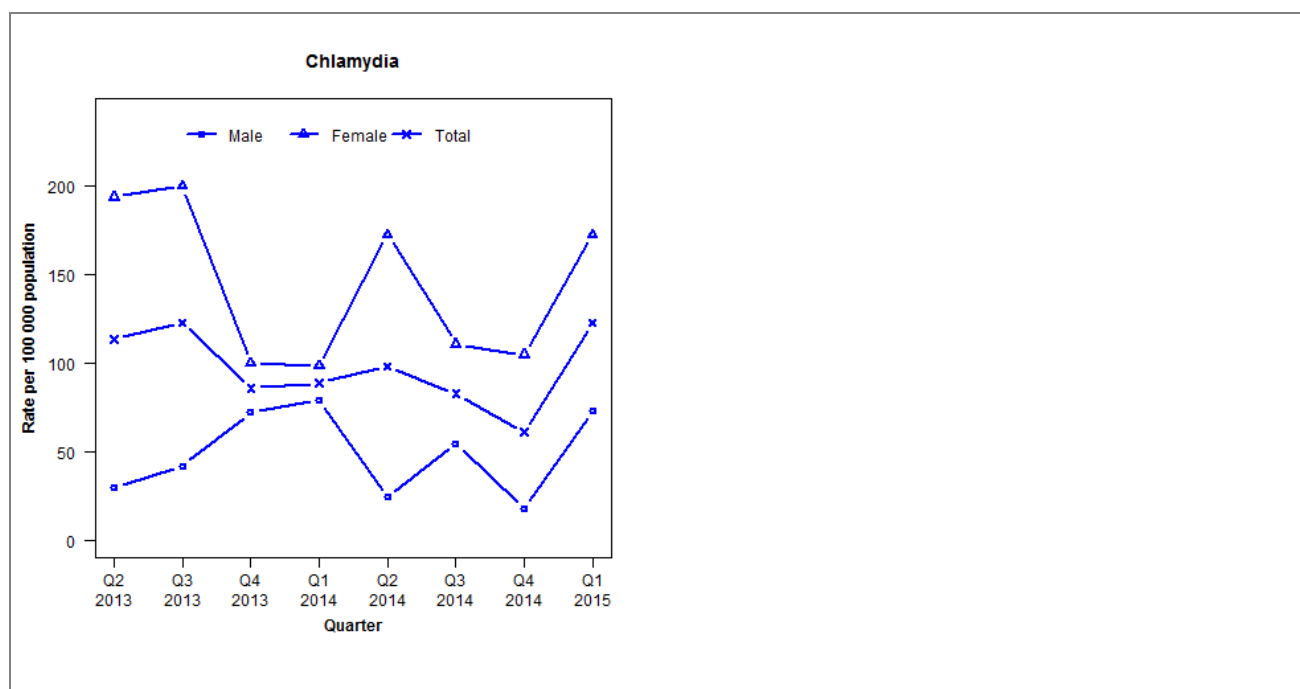
	Q2 2013	Q3 2013	Q4 2013	Q1 2014	Q2 2014	Q3 2014	Q4 2014	Q1 2015
Number of lab-confirmed cases¹	7	4	5	6	22	13	6	14
<i>Female</i>	1	2	1	1	11	8	4	7
<i>Male</i>	6	2	4	5	11	5	2	7
Tests per 100 000 population²	3268	3321	3050	3186	1635	1611	1672	1734

¹Total includes cases where sex is not reported

²Denominator = Statistics New Zealand mid-year population estimates

Laboratory surveillance of chlamydia and gonorrhoea: January - March 2015

Quarterly chlamydia and gonorrhoea rates (female, male and total population), Apr 2013 to Mar 2015



Denominator = Statistics New Zealand mid-year population estimates

Note: Data processing methods allow for exclusion of repeat tests. Gonorrhoea rates are not presented as there are fewer than five cases in many quarters.

Number of lab confirmed chlamydia cases (female, male and total population) and number of tests per 100 000 population, April 2013 to March 2015

	Q2 2013	Q3 2013	Q4 2013	Q1 2014	Q2 2014	Q3 2014	Q4 2014	Q1 2015
Number of lab-confirmed cases¹	37	40	28	29	32	27	20	40
<i>Female</i>	31	32	16	16	28	18	17	28
<i>Male</i>	5	7	12	13	4	9	3	12
Tests per 100 000 population²	1766	1644	1469	1865	1693	1393	1476	1632

¹Total includes cases where sex is not reported

²Denominator = Statistics New Zealand mid-year population estimates

Number of lab confirmed gonorrhoea cases (female, male and total population) and number of tests per 100 000 population, April 2013 to March 2015

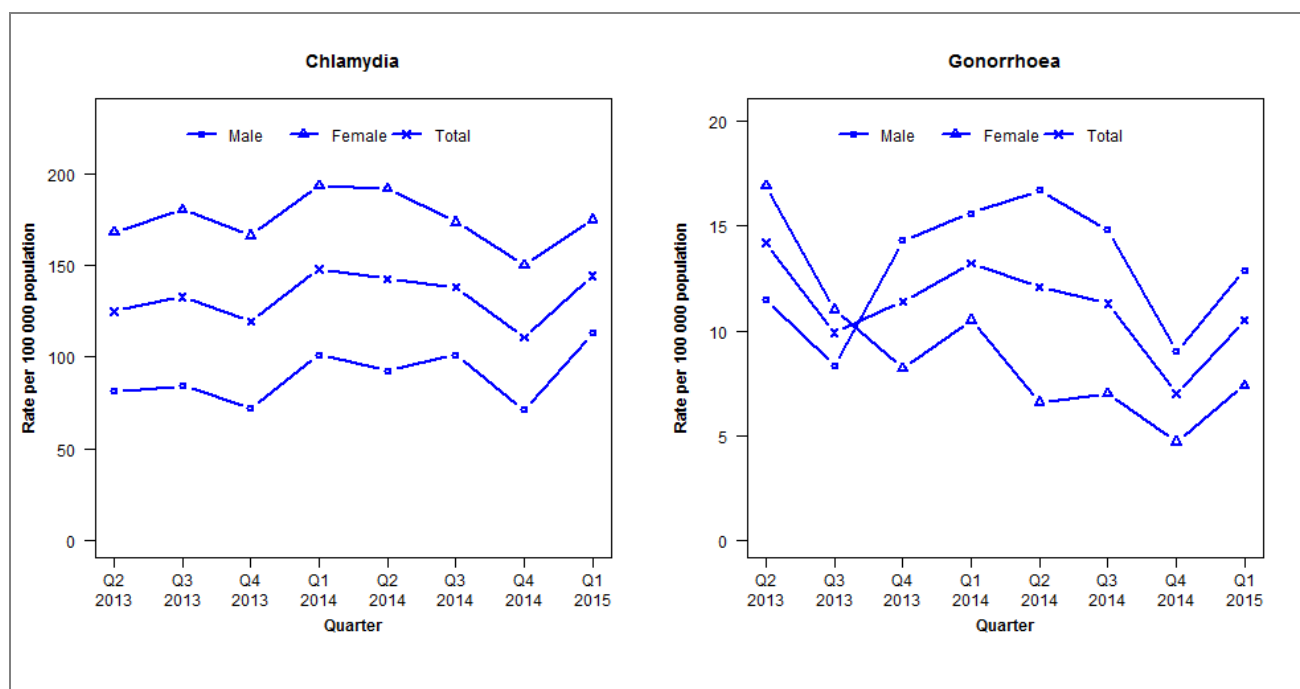
	Q2 2013	Q3 2013	Q4 2013	Q1 2014	Q2 2014	Q3 2014	Q4 2014	Q1 2015
Number of lab-confirmed cases¹	3	1	1	0	1	1	0	1
<i>Female</i>	2	1	0	0	0	0	0	0
<i>Male</i>	1	0	1	0	1	1	0	1
Tests per 100 000 population²	1766	1644	1469	1865	1696	1393	1476	1632

¹Total includes cases where sex is not reported

²Denominator = Statistics New Zealand mid-year population estimates

Laboratory surveillance of chlamydia and gonorrhoea: January - March 2015

Quarterly chlamydia and gonorrhoea rates (female, male and total population), Apr 2013 to Mar 2015



Denominator = Statistics New Zealand mid-year population estimates

Note: Data processing methods allow for exclusion of repeat tests.

Number of lab confirmed chlamydia cases (female, male and total population) and number of tests per 100 000 population, April 2013 to March 2015

	Q2 2013	Q3 2013	Q4 2013	Q1 2014	Q2 2014	Q3 2014	Q4 2014	Q1 2015
Number of lab-confirmed cases¹	634	674	606	760	732	709	569	741
<i>Female</i>	428	460	424	497	493	446	386	450
<i>Male</i>	205	213	182	260	238	260	183	290
Tests per 100 000 population²	2095	2107	1976	2124	2112	2205	2014	2219

¹Total includes cases where sex is not reported

²Denominator = Statistics New Zealand mid-year population estimates

Number of lab confirmed gonorrhoea cases (female, male and total population) and number of tests per 100 000 population, April 2013 to March 2015

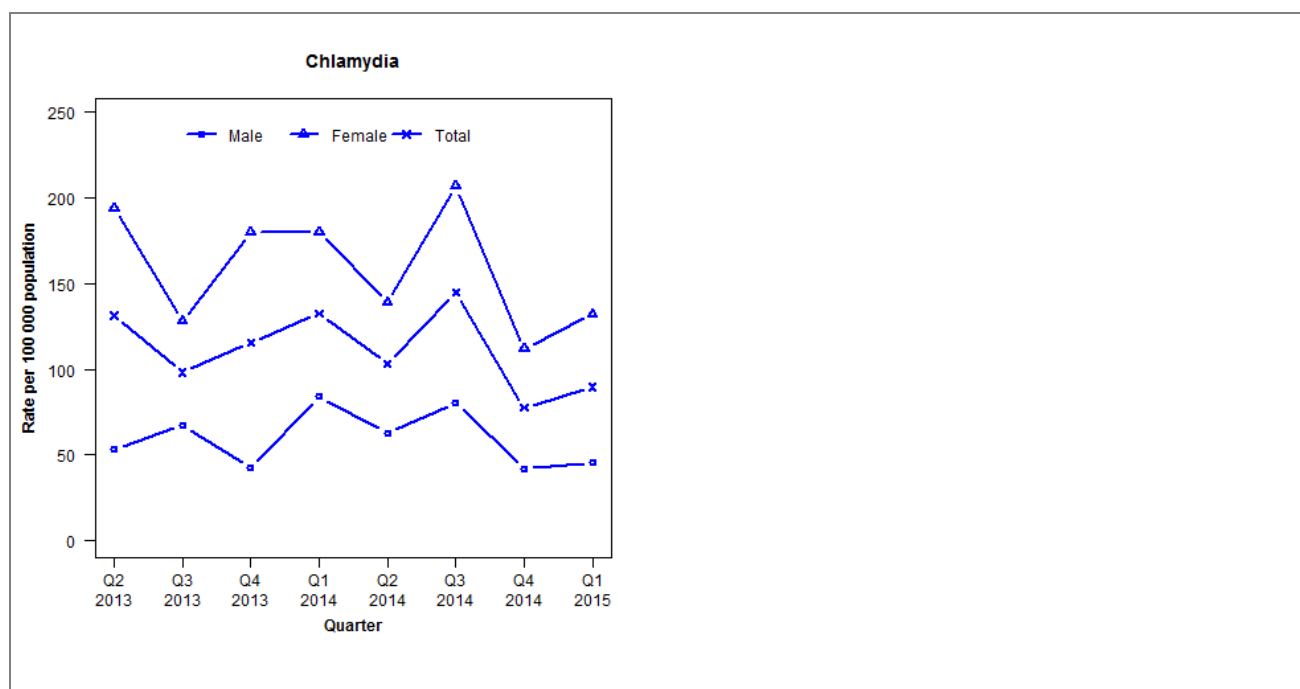
	Q2 2013	Q3 2013	Q4 2013	Q1 2014	Q2 2014	Q3 2014	Q4 2014	Q1 2015
Number of lab-confirmed cases¹	72	50	58	68	62	58	36	54
<i>Female</i>	43	28	21	27	17	18	12	19
<i>Male</i>	29	21	36	40	43	38	23	33
Tests per 100 000 population²	3006	2993	2686	2853	2799	2929	2685	2899

¹Total includes cases where sex is not reported

²Denominator = Statistics New Zealand mid-year population estimates

Laboratory surveillance of chlamydia and gonorrhoea: January - March 2015

Quarterly chlamydia and gonorrhoea rates (female, male and total population), Apr 2013 to Mar 2015



Denominator = Statistics New Zealand mid-year population estimates

Note: Data processing methods introduced allow for exclusion of repeat tests. Gonorrhoea rates are not presented as there are fewer than five cases in many quarters.

Number of lab confirmed chlamydia cases (female, male and total population) and number of tests per 100 000 population, April 2013 to March 2015

	Q2 2013	Q3 2013	Q4 2013	Q1 2014	Q2 2014	Q3 2014	Q4 2014	Q1 2015
Number of lab-confirmed cases¹	75	56	66	77	60	84	45	52
<i>Female</i>	56	37	52	53	41	61	33	39
<i>Male</i>	15	19	12	24	18	23	12	13
Tests per 100 000 population²	1250	1350	1487	1455	1346	1524	1319	1513

¹Total includes cases where sex is not reported

²Denominator = Statistics New Zealand mid-year population estimates

Number of lab confirmed gonorrhoea cases (female, male and total population) and number of tests per 100 000 population, April 2013 to March 2015

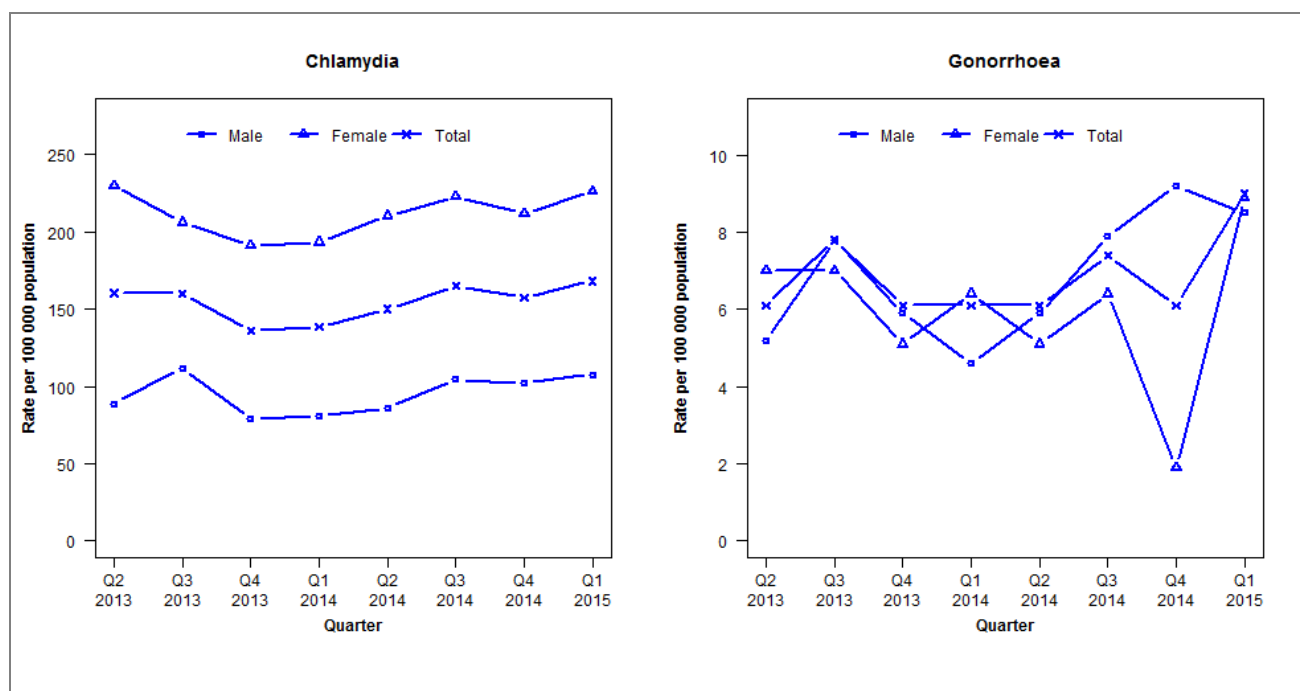
	Q2 2013	Q3 2013	Q4 2013	Q1 2014	Q2 2014	Q3 2014	Q4 2014	Q1 2015
Number of lab-confirmed cases¹	2	2	2	6	5	2	2	0
<i>Female</i>	0	1	1	2	0	0	0	0
<i>Male</i>	2	1	0	4	4	2	1	0
Tests per 100 000 population²	1392	1736	1940	1782	1661	1806	1687	1920

¹Total includes cases where sex is not reported

²Denominator = Statistics New Zealand mid-year population estimates

Laboratory surveillance of chlamydia and gonorrhoea: January - March 2015

Quarterly chlamydia and gonorrhoea rates (female, male and total population), Apr 2013 to Mar 2015



Denominator = Statistics New Zealand mid-year population estimates

Note: Data processing methods allow for exclusion of repeat tests.

Number of lab confirmed chlamydia cases (female, male and total population) and number of tests per 100 000 population, April 2013 to March 2015

	Q2 2013	Q3 2013	Q4 2013	Q1 2014	Q2 2014	Q3 2014	Q4 2014	Q1 2015
Number of lab-confirmed cases¹	496	495	421	429	465	511	488	521
<i>Female</i>	359	322	299	304	331	351	333	356
<i>Male</i>	136	171	121	123	131	159	155	164
Tests per 100 000 population²	2366	2470	2172	2272	2357	2467	2311	2413

¹Total includes cases where sex is not reported

²Denominator = Statistics New Zealand mid-year population estimates

Number of lab confirmed gonorrhoea cases (female, male and total population) and number of tests per 100 000 population, April 2013 to March 2015

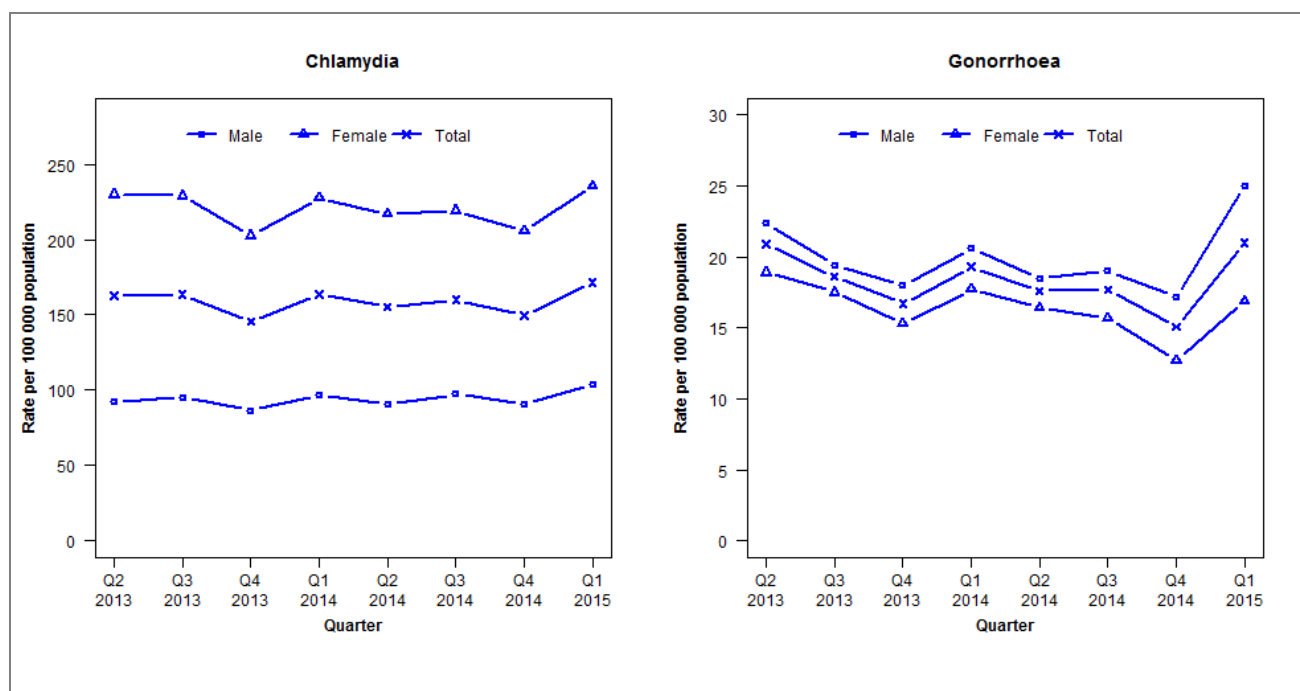
	Q2 2013	Q3 2013	Q4 2013	Q1 2014	Q2 2014	Q3 2014	Q4 2014	Q1 2015
Number of lab-confirmed cases¹	19	24	19	19	19	23	19	28
<i>Female</i>	11	11	8	10	8	10	3	14
<i>Male</i>	8	12	9	7	9	12	14	13
Tests per 100 000 population²	2451	2552	2235	2330	2414	2520	2360	2479

¹Total includes cases where sex is not reported

²Denominator = Statistics New Zealand mid-year population estimates

Laboratory surveillance of chlamydia and gonorrhoea: January - March 2015

Quarterly chlamydia and gonorrhoea rates (female, male and total population), Apr 2013 to Mar 2015



Denominator = Statistics New Zealand mid-year population estimates

Note: Data processing methods allow for exclusion of repeat tests. NAAT (nucleic acid amplification testing) for gonorrhoea has been introduced in the majority of laboratories since 2012. Refer to DHB level reports for further details. Northland data incomplete from Q2 2013, but complete for Q1 2015. Data not received from Waitemata DHB for all quarters in 2013. Additional 2014 data received has been included and may have impacted slightly on the counts and rates produced.

Number of lab confirmed chlamydia cases (female, male and total population) and number of tests per 100 000 population, April 2013 to March 2015

	Q2 2013	Q3 2013	Q4 2013	Q1 2014	Q2 2014	Q3 2014	Q4 2014	Q1 2015
Number of lab-confirmed cases¹	7268	7309	6515	7379	7005	7217	6740	7725
<i>Female</i>	5215	5199	4600	5231	4989	5041	4733	5416
<i>Male</i>	2029	2098	1903	2129	1999	2148	2001	2298
Tests per 100 000 population²	2173	2267	2106	2228	2231	2312	2202	2374

¹Total includes cases where sex is not reported

²Denominator = Statistics New Zealand mid-year population estimates

Number of lab confirmed gonorrhoea cases (female, male and total population) and number of tests per 100 000 population, April 2013 to March 2015

	Q2 2013	Q3 2013	Q4 2013	Q1 2014	Q2 2014	Q3 2014	Q4 2014	Q1 2015
Number of lab-confirmed cases¹	932	830	748	870	794	800	679	946
<i>Female</i>	429	397	347	408	378	362	291	388
<i>Male</i>	492	427	396	455	409	420	380	553
Tests per 100 000 population²	2477	2617	2394	2536	2471	2560	2441	2653

¹Total includes cases where sex is not reported

²Denominator = Statistics New Zealand mid-year population estimates