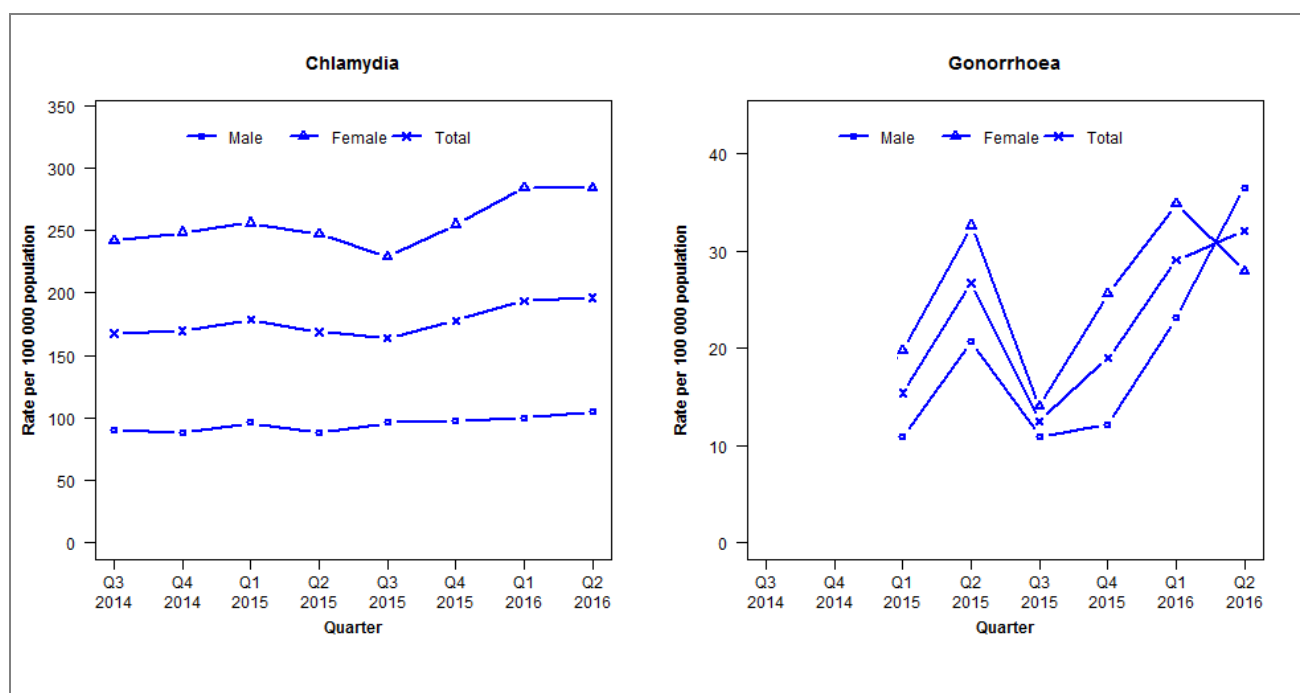


Laboratory surveillance of chlamydia and gonorrhoea: April - June 2016

Quarterly chlamydia and gonorrhoea rates (female, male and total population), July 2014 to June 2016



¹Total includes cases where sex is not reported

Denominator = Statistics New Zealand mid-year population estimates

Note: Data processing methods allow for exclusion of repeat tests. Additional 2014 data received has been included and may have impacted slightly on the counts produced. Gonorrhoea rates are not presented before Q1 2015 as data was incomplete.

Number of lab confirmed chlamydia cases (female, male and total population) and number of tests per 100 000 population, July 2014 to June 2016

	Q3 2014	Q4 2014	Q1 2015	Q2 2015	Q3 2015	Q4 2015	Q1 2016	Q2 2016
Number of lab-confirmed cases¹	278	282	300	284	276	299	326	330
<i>Female</i>	205	211	220	212	197	219	244	244
<i>Male</i>	73	71	79	72	79	80	82	86
Tests per 100 000 population²	1724	1765	1867	1765	1944	1841	1907	1898

¹Total includes cases where sex is not reported

²Denominator = Statistics New Zealand mid-year population estimates

Number of lab confirmed gonorrhoea cases (female, male and total population) and number of tests per 100 000 population, July 2014 to June 2016

	Q3 2014	Q4 2014	Q1 2015	Q2 2015	Q3 2015	Q4 2015	Q1 2016	Q2 2016
Number of lab-confirmed cases¹	31	16	26	45	21	32	49	54
<i>Female</i>	19	10	17	28	12	22	30	24
<i>Male</i>	12	6	9	17	9	10	19	30
Tests per 100 000 population²	1851	1814	2609	2455	2701	2601	2679	2595

¹Total includes cases where sex is not reported

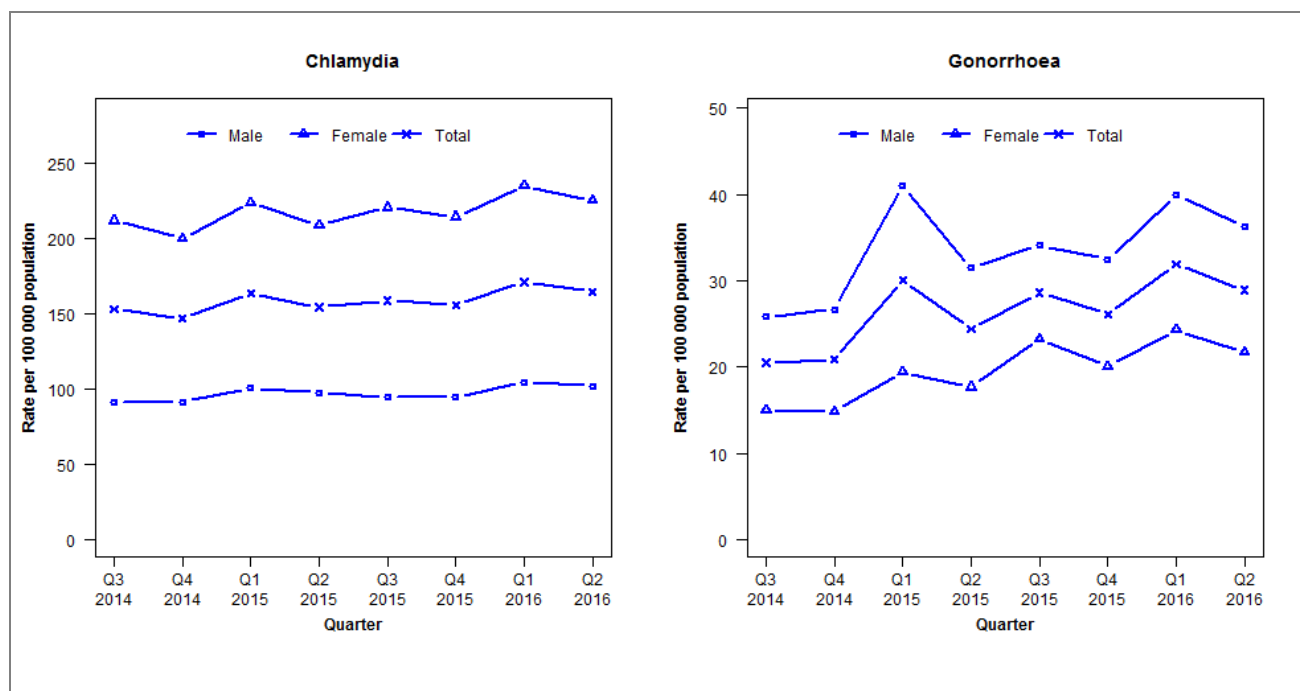
²Denominator = Statistics New Zealand mid-year population estimates

AUCKLAND REGION

Auckland, Counties Manukau and Waitemata DHBs

Laboratory surveillance of chlamydia and gonorrhoea: April - June 2016

Quarterly chlamydia and gonorrhoea rates (female, male and total population), July 2014 to June 2016



¹Total includes cases where sex is not reported
Denominator = Statistics New Zealand mid-year population estimates

Note: Data processing methods allow for exclusion of repeat tests.

Number of lab confirmed chlamydia cases (female, male and total population) and number of tests per 100 000 population, July 2014 to June 2016

	Q3 2014	Q4 2014	Q1 2015	Q2 2015	Q3 2015	Q4 2015	Q1 2016	Q2 2016
Number of lab-confirmed cases¹	2369	2270	2598	2453	2524	2473	2719	2616
<i>Female</i>	1670	1575	1809	1688	1784	1734	1900	1820
<i>Male</i>	692	694	786	763	739	739	815	795
Tests per 100 000 population²	2634	2550	2662	2646	2621	2574	2776	2608

¹Total includes cases where sex is not reported

²Denominator = Statistics New Zealand mid-year population estimates

Number of lab confirmed gonorrhoea cases (female, male and total population) and number of tests per 100 000 population, July 2014 to June 2016

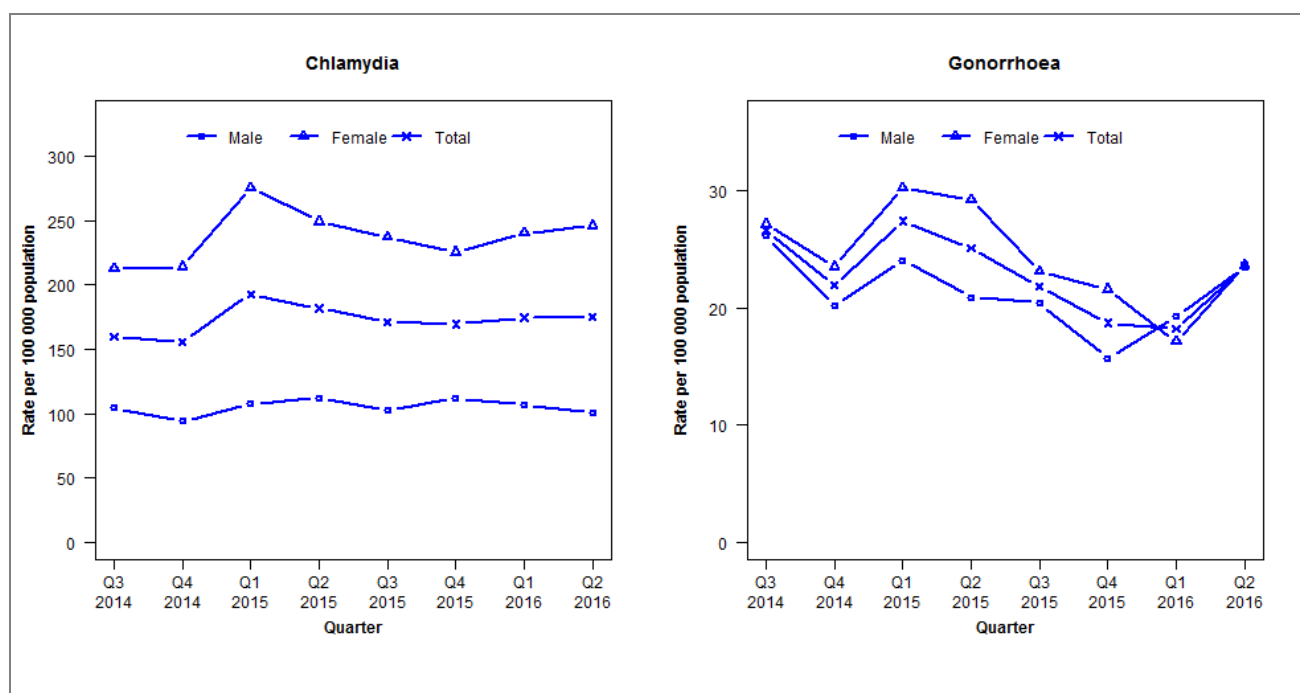
	Q3 2014	Q4 2014	Q1 2015	Q2 2015	Q3 2015	Q4 2015	Q1 2016	Q2 2016
Number of lab-confirmed cases¹	316	322	477	388	454	415	507	458
<i>Female</i>	118	117	157	143	188	162	196	175
<i>Male</i>	195	202	319	245	266	253	311	283
Tests per 100 000 population²	2898	2819	2946	2919	2902	2855	3075	2788

¹Total includes cases where sex is not reported

²Denominator = Statistics New Zealand mid-year population estimates

Laboratory surveillance of chlamydia and gonorrhoea: April - June 2016

Quarterly chlamydia and gonorrhoea rates (female, male and total population), July 2014 to June 2016



¹Total includes cases where sex is not reported

Denominator = Statistics New Zealand mid-year population estimates

Note: Data processing methods allow for exclusion of repeat tests. Additional 2014 data received has been included may have impacted slightly on the counts produced.

Number of lab confirmed chlamydia cases (female, male and total population) and number of tests per 100 000 population, July 2014 to June 2016

	Q3 2014	Q4 2014	Q1 2015	Q2 2015	Q3 2015	Q4 2015	Q1 2016	Q2 2016
Number of lab-confirmed cases¹	612	597	753	710	669	663	682	683
<i>Female</i>	416	419	547	495	471	448	477	489
<i>Male</i>	196	177	206	215	197	215	205	194
Tests per 100 000 population²	2072	1956	2184	2118	2199	2135	2296	2287

¹Total includes cases where sex is not reported

²Denominator = Statistics New Zealand mid-year population estimates

Number of lab confirmed gonorrhoea cases (female, male and total population) and number of tests per 100 000 population, July 2014 to June 2016

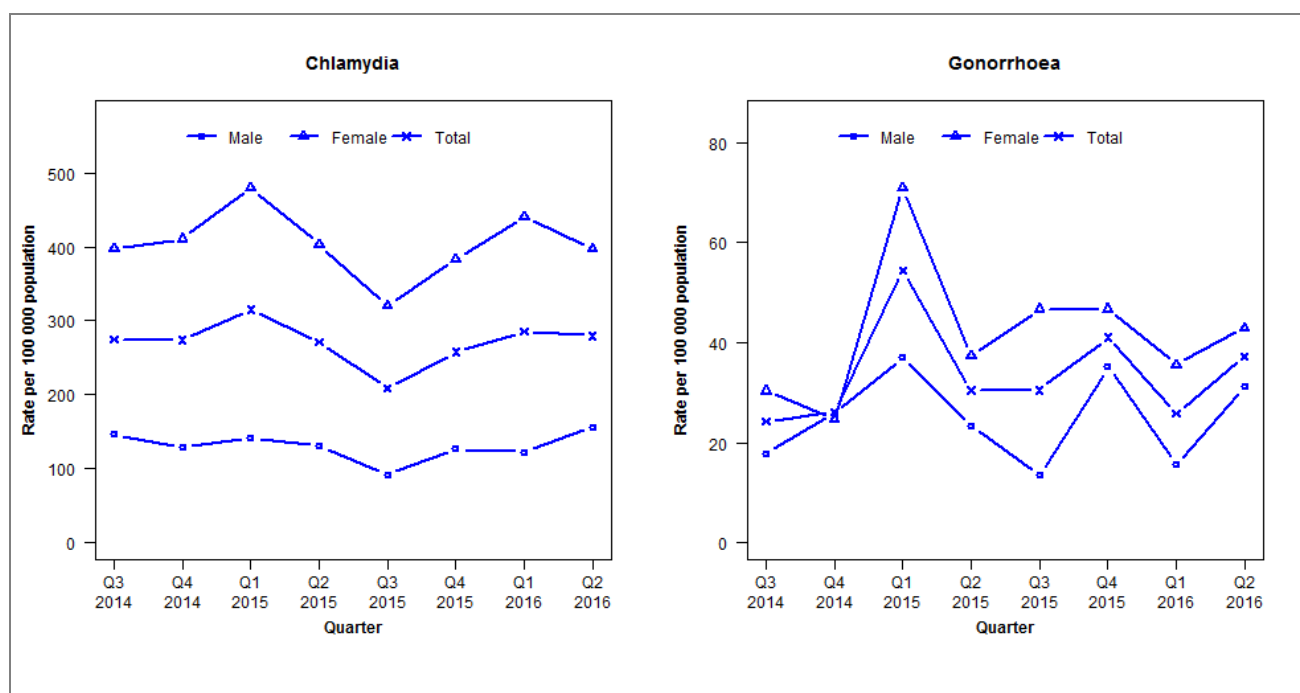
	Q3 2014	Q4 2014	Q1 2015	Q2 2015	Q3 2015	Q4 2015	Q1 2016	Q2 2016
Number of lab-confirmed cases¹	102	84	107	98	85	73	71	92
<i>Female</i>	53	46	60	58	46	43	34	47
<i>Male</i>	49	38	46	40	39	30	37	45
Tests per 100 000 population²	2525	2401	2602	2473	2570	2487	2649	2421

¹Total includes cases where sex is not reported

²Denominator = Statistics New Zealand mid-year population estimates

Laboratory surveillance of chlamydia and gonorrhoea: April - June 2016

Quarterly chlamydia and gonorrhoea rates (female, male and total population), July 2014 to June 2016



¹Total includes cases where sex is not reported

Denominator = Statistics New Zealand mid-year population estimates

Note: Data processing methods allow for exclusion of repeat tests. Additional 2014 data received has been included and may have impacted slightly on the counts and rates produced. NAAT Gonorrhoea testing introduced for Pathlab Rotorua 1 July 2013.

Number of lab confirmed chlamydia cases (female, male and total population) and number of tests per 100 000 population, July 2014 to June 2016

	Q3 2014	Q4 2014	Q1 2015	Q2 2015	Q3 2015	Q4 2015	Q1 2016	Q2 2016
Number of lab-confirmed cases¹	284	283	330	284	219	270	299	293
<i>Female</i>	210	217	257	216	172	205	236	213
<i>Male</i>	74	65	73	67	47	65	63	80
Tests per 100 000 population²	2782	2654	2979	2810	2771	2771	3076	2982

¹Total includes cases where sex is not reported

²Denominator = Statistics New Zealand mid-year population estimates

Number of lab confirmed gonorrhoea cases (female, male and total population) and number of tests per 100 000 population, July 2014 to June 2016

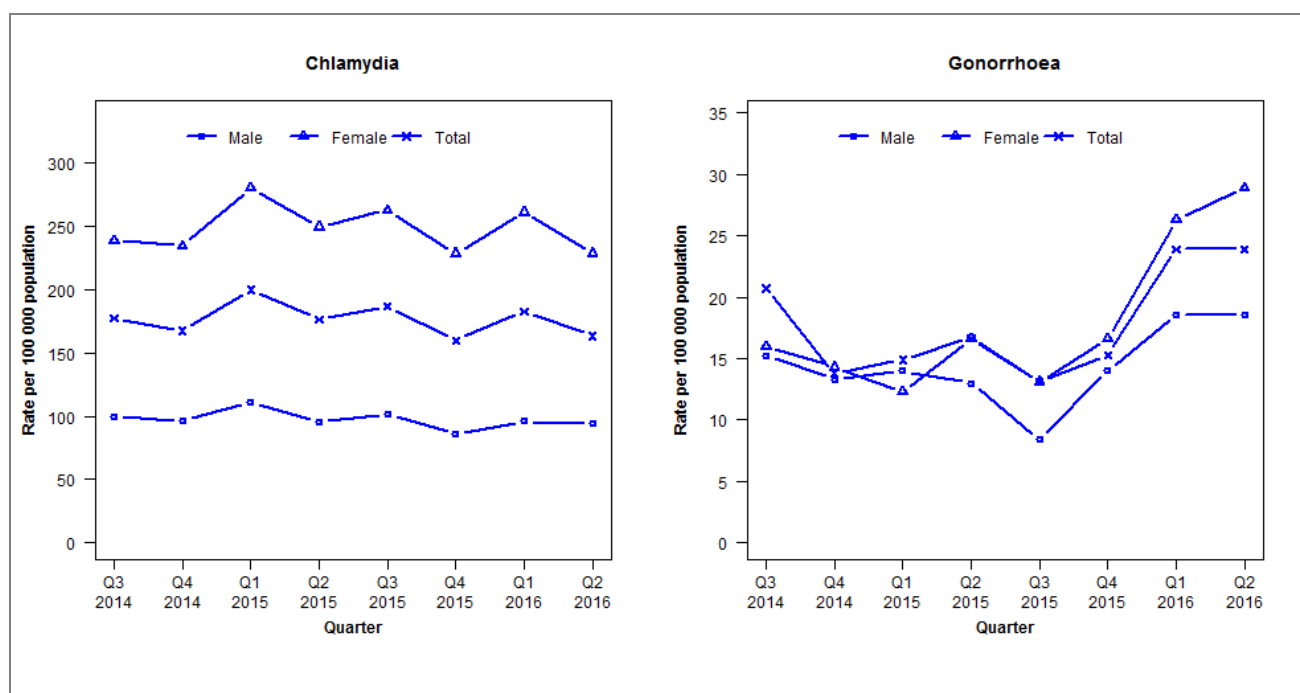
	Q3 2014	Q4 2014	Q1 2015	Q2 2015	Q3 2015	Q4 2015	Q1 2016	Q2 2016
Number of lab-confirmed cases¹	25	27	57	32	32	43	27	39
<i>Female</i>	16	13	38	20	25	25	19	23
<i>Male</i>	9	13	19	12	7	18	8	16
Tests per 100 000 population²	2791	2665	2997	2818	2783	2789	3083	2992

¹Total includes cases where sex is not reported

²Denominator = Statistics New Zealand mid-year population estimates

Laboratory surveillance of chlamydia and gonorrhoea: April - June 2016

Quarterly chlamydia and gonorrhoea rates (female, male and total population), July 2014 to June 2016



¹Total includes cases where sex is not reported

Denominator = Statistics New Zealand mid-year population estimates

Note: Data processing methods allow for exclusion of repeat tests. Additional 2014 data received has been included and may have impacted slightly on the counts and rates produced. NAAT (nucleic acid amplification testing) for gonorrhoea testing was introduced in Q3 2013.

Number of lab confirmed chlamydia cases (female, male and total population) and number of tests per 100 000 population, July 2014 to June 2016

	Q3 2014	Q4 2014	Q1 2015	Q2 2015	Q3 2015	Q4 2015	Q1 2016	Q2 2016
Number of lab-confirmed cases¹	386	364	443	391	413	354	405	362
<i>Female</i>	268	263	320	285	300	261	298	261
<i>Male</i>	105	101	119	102	109	92	103	101
Tests per 100 000 population²	2092	2002	2155	2033	2121	2074	2204	2126

¹Total includes cases where sex is not reported

²Denominator = Statistics New Zealand mid-year population estimates

Number of lab confirmed gonorrhoea cases (female, male and total population) and number of tests per 100 000 population, July 2014 to June 2016

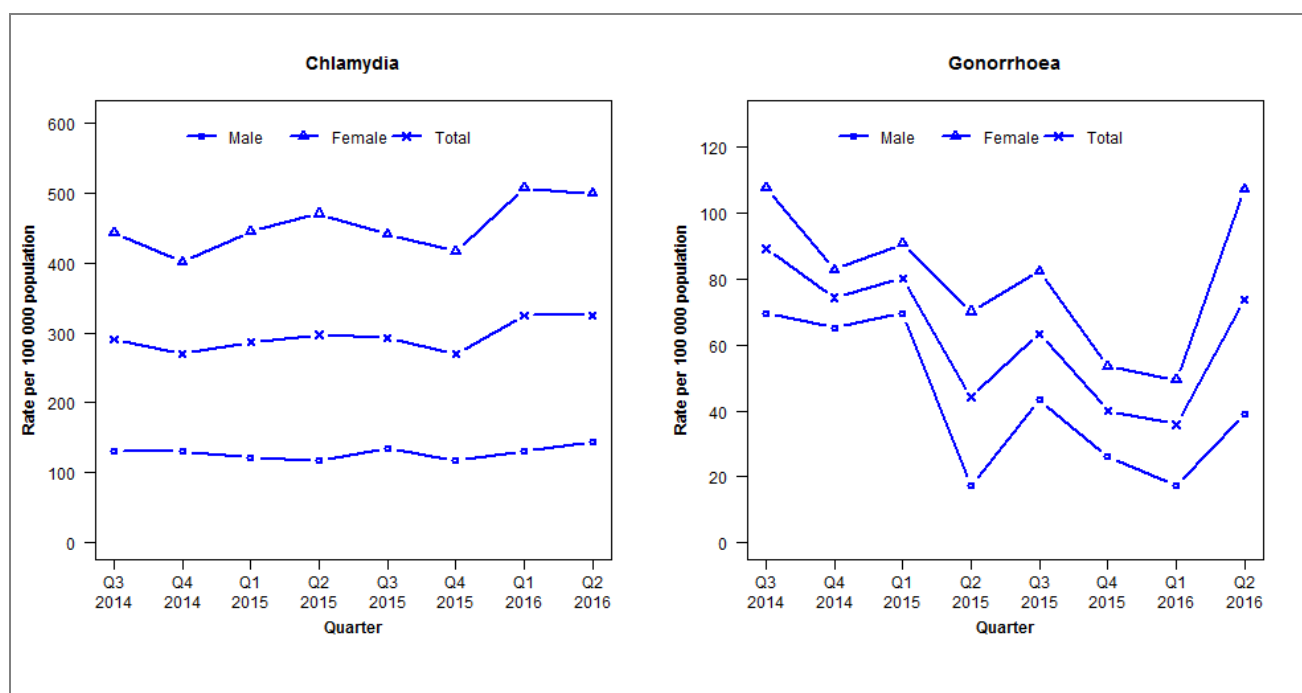
	Q3 2014	Q4 2014	Q1 2015	Q2 2015	Q3 2015	Q4 2015	Q1 2016	Q2 2016
Number of lab-confirmed cases¹	45	30	33	37	29	34	53	53
<i>Female</i>	18	16	14	19	15	19	30	33
<i>Male</i>	16	14	15	14	9	15	20	20
Tests per 100 000 population²	2093	2006	2162	2034	2123	2080	2207	2127

¹Total includes cases where sex is not reported

²Denominator = Statistics New Zealand mid-year population estimates

Laboratory surveillance of chlamydia and gonorrhoea: April - June 2016

Quarterly chlamydia and gonorrhoea rates (female, male and total population), July 2014 to June 2016



¹Total includes cases where sex is not reported

Denominator = Statistics New Zealand mid-year population estimates

Note: Data processing methods allow for exclusion of repeat tests.

Number of lab confirmed chlamydia cases (female, male and total population) and number of tests per 100 000 population, July 2014 to June 2016

	Q3 2014	Q4 2014	Q1 2015	Q2 2015	Q3 2015	Q4 2015	Q1 2016	Q2 2016
Number of lab-confirmed cases¹	137	127	136	141	139	128	154	154
<i>Female</i>	107	97	108	114	107	101	123	121
<i>Male</i>	30	30	28	27	31	27	30	33
Tests per 100 000 population²	2349	2134	2070	2156	2342	2108	2371	2365

¹Total includes cases where sex is not reported

²Denominator = Statistics New Zealand mid-year population estimates

Number of lab confirmed gonorrhoea cases (female, male and total population) and number of tests per 100 000 population, July 2014 to June 2016

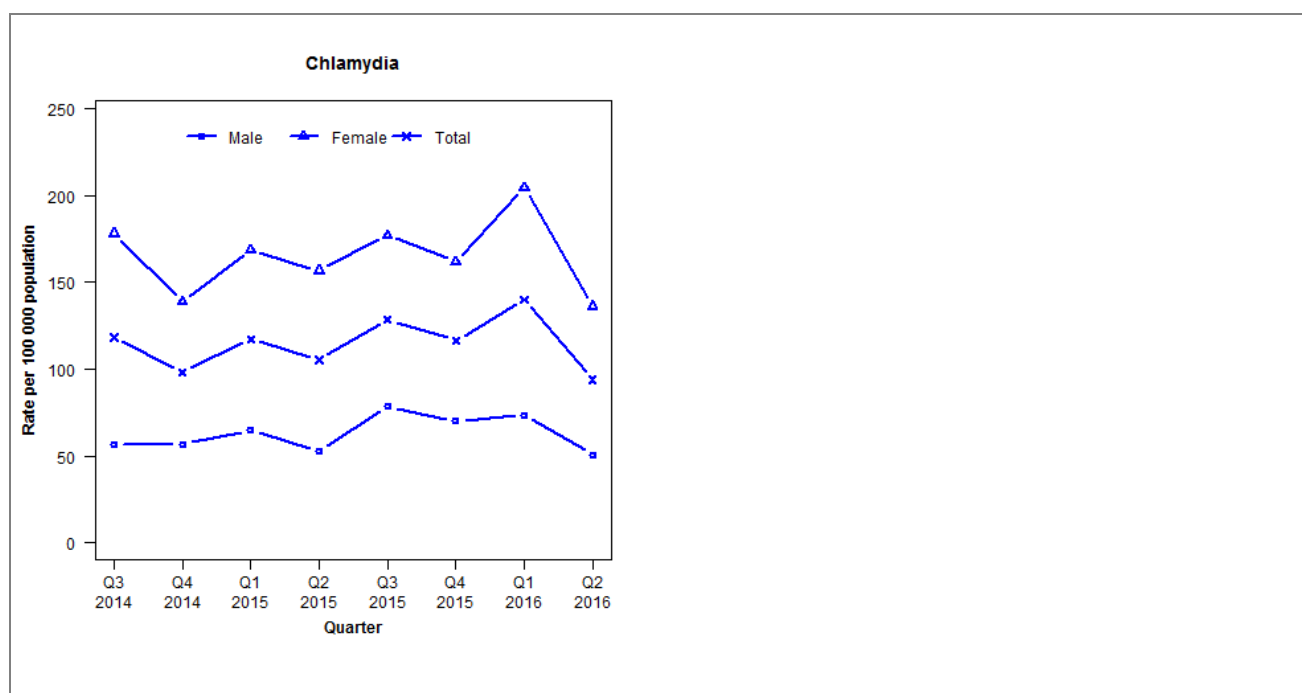
	Q3 2014	Q4 2014	Q1 2015	Q2 2015	Q3 2015	Q4 2015	Q1 2016	Q2 2016
Number of lab-confirmed cases¹	42	35	38	21	30	19	17	35
<i>Female</i>	26	20	22	17	20	13	12	26
<i>Male</i>	16	15	16	4	10	6	4	9
Tests per 100 000 population²	2383	2224	2188	2236	2414	2160	2414	2399

¹Total includes cases where sex is not reported

²Denominator = Statistics New Zealand mid-year population estimates

Laboratory surveillance of chlamydia and gonorrhoea: April - June 2016

Quarterly chlamydia and gonorrhoea rates (female, male and total population), July 2014 to June 2016



¹Total includes cases where sex is not reported

Denominator = Statistics New Zealand mid-year population estimates

Note: Data processing methods allow for exclusion of repeat tests. Gonorrhoea rates are not presented as there are fewer than five cases in many quarters.

Number of lab confirmed chlamydia cases (female, male and total population) and number of tests per 100 000 population, July 2014 to June 2016

	Q3 2014	Q4 2014	Q1 2015	Q2 2015	Q3 2015	Q4 2015	Q1 2016	Q2 2016
Number of lab-confirmed cases¹	136	113	136	122	149	135	162	109
<i>Female</i>	104	81	99	92	104	95	120	80
<i>Male</i>	32	32	37	30	45	40	42	29
Tests per 100 000 population²	2000	1893	1903	1785	1993	1921	2033	1984

¹Total includes cases where sex is not reported

²Denominator = Statistics New Zealand mid-year population estimates

Number of lab confirmed gonorrhoea cases (female, male and total population) and number of tests per 100 000 population, July 2014 to June 2016

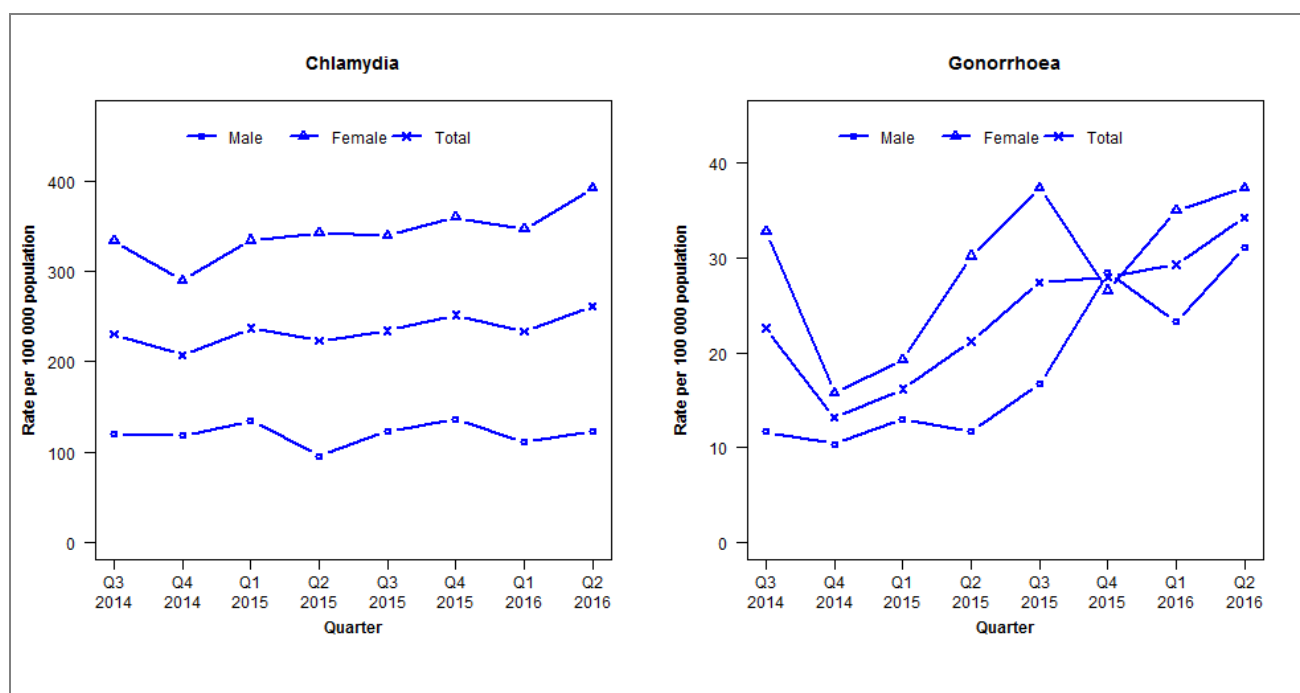
	Q3 2014	Q4 2014	Q1 2015	Q2 2015	Q3 2015	Q4 2015	Q1 2016	Q2 2016
Number of lab-confirmed cases¹	10	1	0	8	1	1	6	1
<i>Female</i>	6	0	0	4	1	0	1	0
<i>Male</i>	4	1	0	4	0	1	5	1
Tests per 100 000 population²	2524	2319	2328	2175	2431	2244	2516	2538

¹Total includes cases where sex is not reported

²Denominator = Statistics New Zealand mid-year population estimates

Laboratory surveillance of chlamydia and gonorrhoea: April - June 2016

Quarterly chlamydia and gonorrhoea rates (female, male and total population), July 2014 to June 2016



¹Total includes cases where sex is not reported

Denominator = Statistics New Zealand mid-year population estimates

Note: Data processing methods allow for exclusion of repeat tests.

Number of lab confirmed chlamydia cases (female, male and total population) and number of tests per 100 000 population, July 2014 to June 2016

	Q3 2014	Q4 2014	Q1 2015	Q2 2015	Q3 2015	Q4 2015	Q1 2016	Q2 2016
Number of lab-confirmed cases¹	367	330	381	358	376	404	375	420
<i>Female</i>	275	239	277	284	281	298	287	325
<i>Male</i>	92	91	104	74	95	105	86	95
Tests per 100 000 population²	1958	1839	2118	1959	2091	2024	2093	2167

¹Total includes cases where sex is not reported

²Denominator = Statistics New Zealand mid-year population estimates

Number of lab confirmed gonorrhoea cases (female, male and total population) and number of tests per 100 000 population, July 2014 to June 2016

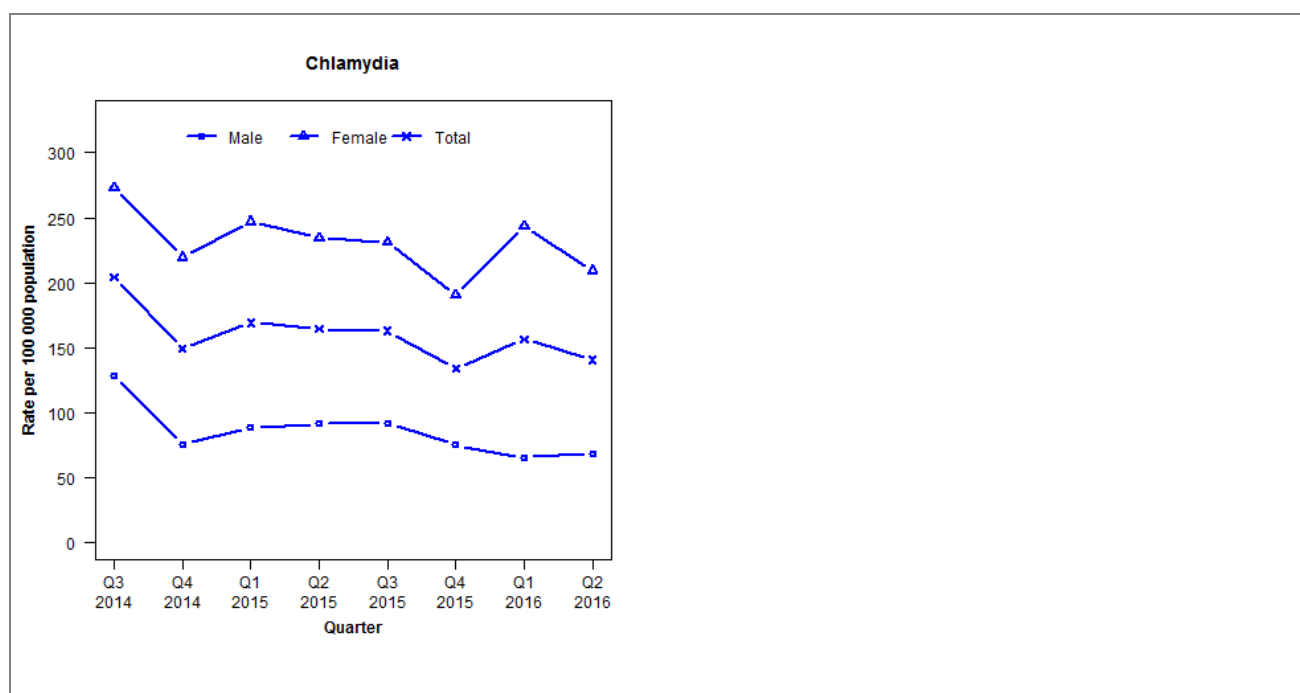
	Q3 2014	Q4 2014	Q1 2015	Q2 2015	Q3 2015	Q4 2015	Q1 2016	Q2 2016
Number of lab-confirmed cases¹	36	21	26	34	44	45	47	55
<i>Female</i>	27	13	16	25	31	22	29	31
<i>Male</i>	9	8	10	9	13	22	18	24
Tests per 100 000 population²	2290	2160	2429	2203	2343	2200	2244	2305

¹Total includes cases where sex is not reported

²Denominator = Statistics New Zealand mid-year population estimates

Laboratory surveillance of chlamydia and gonorrhoea: April - June 2016

Quarterly chlamydia and gonorrhoea rates (female, male and total population), July 2014 to June 2016



¹Total includes cases where sex is not reported

Denominator = Statistics New Zealand mid-year population estimates

Note: Data processing methods allow for exclusion of repeat tests. NAAT testing introduced in Q1 2014. Gonorrhoea rates are not presented as there are fewer than five cases in many quarters.

Number of lab confirmed chlamydia cases (female, male and total population) and number of tests per 100 000 population, July 2014 to June 2016

	Q3 2014	Q4 2014	Q1 2015	Q2 2015	Q3 2015	Q4 2015	Q1 2016	Q2 2016
Number of lab-confirmed cases¹	127	93	106	103	102	84	98	88
<i>Female</i>	87	70	79	75	74	61	78	67
<i>Male</i>	39	23	27	28	28	23	20	21
Tests per 100 000 population²	1873	1722	1688	1700	1823	1681	1915	1821

¹Total includes cases where sex is not reported

²Denominator = Statistics New Zealand mid-year population estimates

Number of lab confirmed gonorrhoea cases (female, male and total population) and number of tests per 100 000 population, July 2014 to June 2016

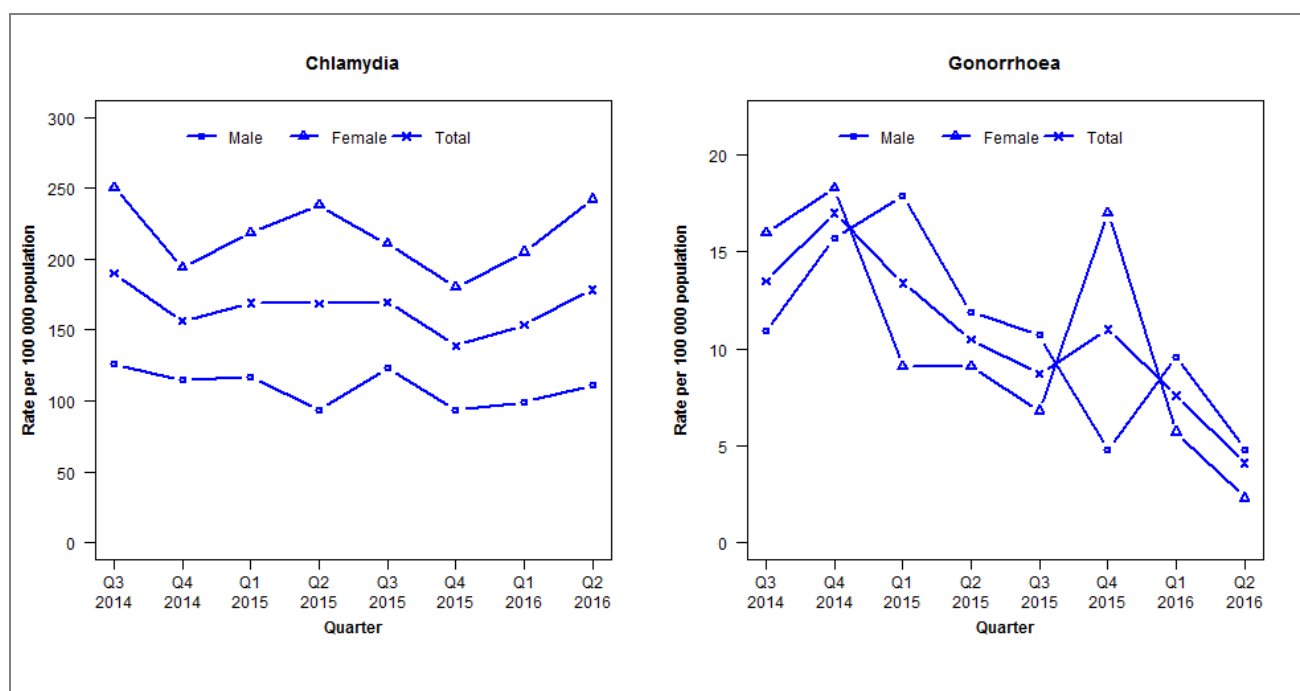
	Q3 2014	Q4 2014	Q1 2015	Q2 2015	Q3 2015	Q4 2015	Q1 2016	Q2 2016
Number of lab-confirmed cases¹	14	5	8	6	9	8	10	2
<i>Female</i>	8	3	4	3	6	4	5	1
<i>Male</i>	6	2	4	3	3	4	5	1
Tests per 100 000 population²	1881	1768	1735	1744	1864	1725	1954	1845

¹Total includes cases where sex is not reported

²Denominator = Statistics New Zealand mid-year population estimates

Laboratory surveillance of chlamydia and gonorrhoea: April - June 2016

Quarterly chlamydia and gonorrhoea rates (female, male and total population), July 2014 to June 2016



¹Total includes cases where sex is not reported

Denominator = Statistics New Zealand mid-year population estimates

Note: Data processing procedures allow for exclusion of repeat tests. NAAT testing introduced in Q1 2014.

Number of lab confirmed chlamydia cases (female, male and total population) and number of tests per 100 000 population, July 2014 to June 2016

	Q3 2014	Q4 2014	Q1 2015	Q2 2015	Q3 2015	Q4 2015	Q1 2016	Q2 2016
Number of lab-confirmed cases¹	323	266	291	290	292	239	264	307
<i>Female</i>	219	170	193	210	186	159	181	214
<i>Male</i>	104	95	98	78	103	78	83	93
Tests per 100 000 population²	1903	1744	1892	1822	1974	1823	1955	1903

¹Total includes cases where sex is not reported

²Denominator = Statistics New Zealand mid-year population estimates

Number of lab confirmed gonorrhoea cases (female, male and total population) and number of tests per 100 000 population, July 2014 to June 2016

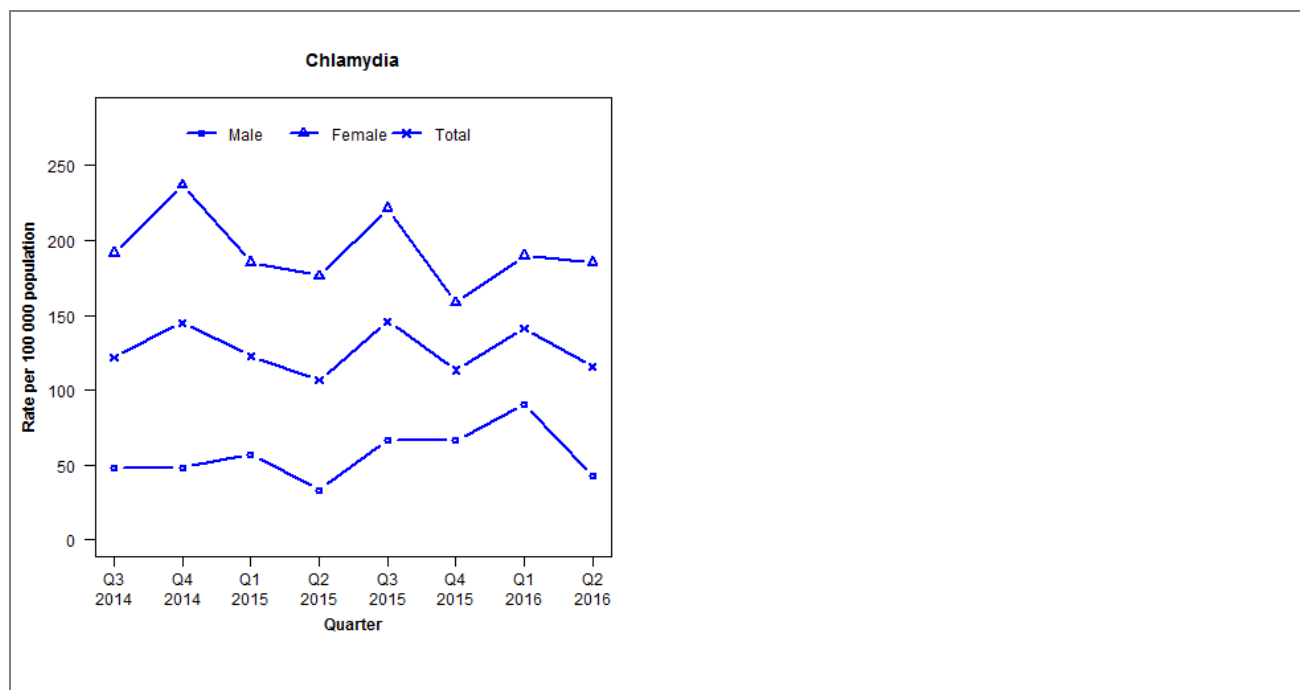
	Q3 2014	Q4 2014	Q1 2015	Q2 2015	Q3 2015	Q4 2015	Q1 2016	Q2 2016
Number of lab-confirmed cases¹	23	29	23	18	15	19	13	7
<i>Female</i>	14	16	8	8	6	15	5	2
<i>Male</i>	9	13	15	10	9	4	8	4
Tests per 100 000 population²	1943	1794	1941	1876	2016	1863	2025	1934

¹Total includes cases where sex is not reported

²Denominator = Statistics New Zealand mid-year population estimates

Laboratory surveillance of chlamydia and gonorrhoea: April - June 2016

Quarterly chlamydia and gonorrhoea rates (female, male and total population), July 2014 to June 2016



¹Total includes cases where sex is not reported

Denominator = Statistics New Zealand mid-year population estimates

Note: Data processing methods allow for exclusion of repeat tests. Gonorrhoea rates are not presented as there are fewer than five cases in many quarters.

Number of lab confirmed chlamydia cases (female, male and total population) and number of tests per 100 000 population, July 2014 to June 2016

	Q3 2014	Q4 2014	Q1 2015	Q2 2015	Q3 2015	Q4 2015	Q1 2016	Q2 2016
Number of lab-confirmed cases¹	52	62	53	46	63	49	61	50
<i>Female</i>	42	52	41	39	49	35	42	41
<i>Male</i>	10	10	12	7	14	14	19	9
Tests per 100 000 population²	1476	1378	1389	1243	1586	1525	1632	1505

¹Total includes cases where sex is not reported

²Denominator = Statistics New Zealand mid-year population estimates

Number of lab confirmed gonorrhoea cases (female, male and total population) and number of tests per 100 000 population, July 2014 to June 2016

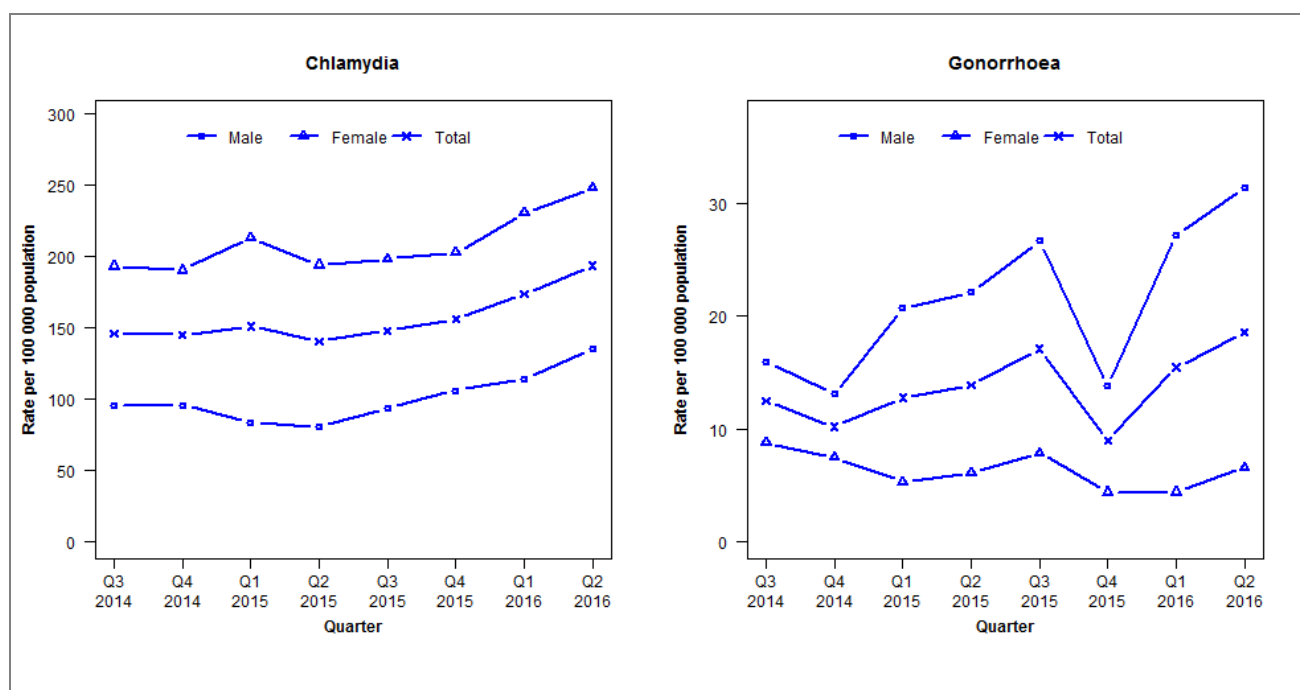
	Q3 2014	Q4 2014	Q1 2015	Q2 2015	Q3 2015	Q4 2015	Q1 2016	Q2 2016
Number of lab-confirmed cases¹	4	1	2	1	1	0	0	0
<i>Female</i>	1	1	1	1	0	0	0	0
<i>Male</i>	3	0	1	0	1	0	0	0
Tests per 100 000 population²	1441	1399	1419	1269	1604	1546	1701	1618

¹Total includes cases where sex is not reported

²Denominator = Statistics New Zealand mid-year population estimates

Laboratory surveillance of chlamydia and gonorrhoea: April - June 2016

Quarterly chlamydia and gonorrhoea rates (female, male and total population), July 2014 to June 2016



¹Total includes cases where sex is not reported
 Denominator = Statistics New Zealand mid-year population estimates

Note: Data processing methods allow for exclusion of repeat tests. From Q1 2016 all data for the Wellington region is now being received (previously excluded a small Wellington Hospital laboratory).

Number of lab confirmed chlamydia cases (female, male and total population) and number of tests per 100 000 population, July 2014 to June 2016

	Q3 2014	Q4 2014	Q1 2015	Q2 2015	Q3 2015	Q4 2015	Q1 2016	Q2 2016
Number of lab-confirmed cases¹	643	638	673	625	659	696	774	862
<i>Female</i>	437	431	486	443	453	463	526	567
<i>Male</i>	204	205	182	175	204	230	248	293
Tests per 100 000 population²	2538	2387	2513	2554	2590	2489	2843	2869

¹Total includes cases where sex is not reported

²Denominator = Statistics New Zealand mid-year population estimates

Number of lab confirmed gonorrhoea cases (female, male and total population) and number of tests per 100 000 population, July 2014 to June 2016

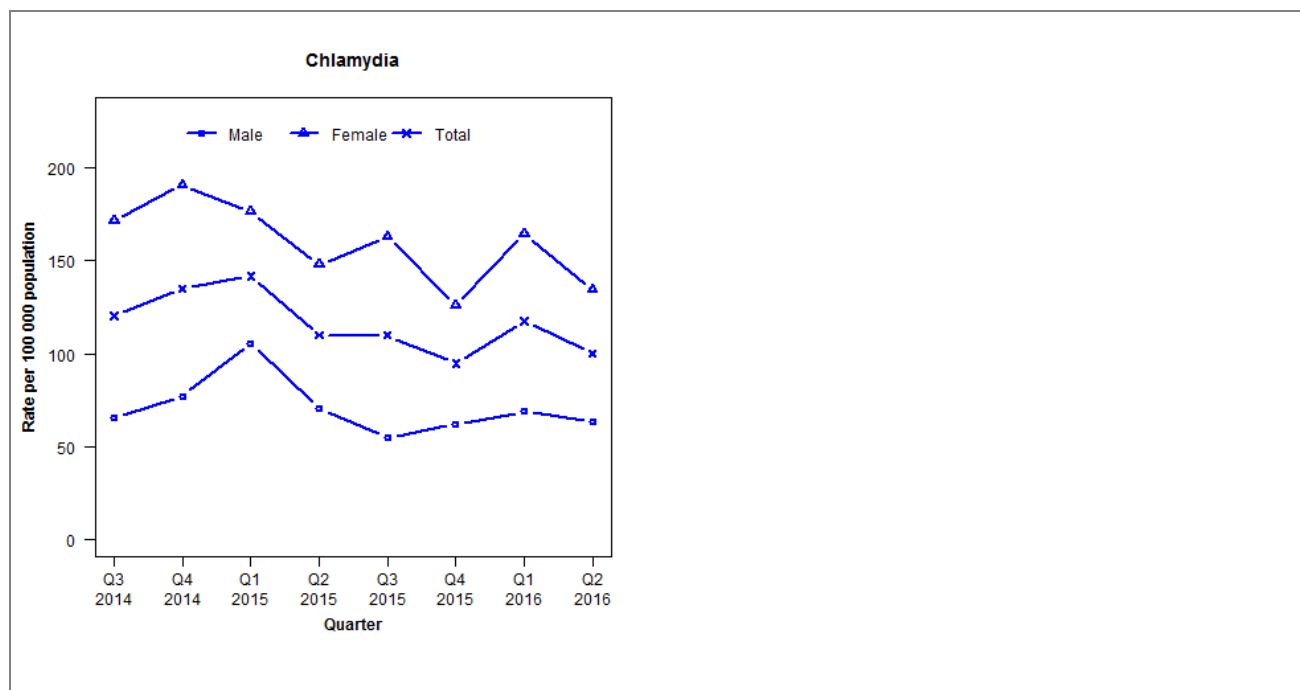
	Q3 2014	Q4 2014	Q1 2015	Q2 2015	Q3 2015	Q4 2015	Q1 2016	Q2 2016
Number of lab-confirmed cases¹	55	45	57	62	76	40	69	83
<i>Female</i>	20	17	12	14	18	10	10	15
<i>Male</i>	34	28	45	48	58	30	59	68
Tests per 100 000 population²	2506	2350	2514	2555	2594	2480	2881	2887

¹Total includes cases where sex is not reported

²Denominator = Statistics New Zealand mid-year population estimates

Laboratory surveillance of chlamydia and gonorrhoea: April - June 2016

Quarterly chlamydia and gonorrhoea rates (female, male and total population), July 2014 to June 2016



¹Total includes cases where sex is not reported

Denominator = Statistics New Zealand mid-year population estimates

Note: Data processing procedures allow for exclusion of repeat tests. Gonorrhoea rates are not presented as there are fewer than five cases in many quarters.

Number of lab confirmed chlamydia cases (female, male and total population) and number of tests per 100 000 population, July 2014 to June 2016

	Q3 2014	Q4 2014	Q1 2015	Q2 2015	Q3 2015	Q4 2015	Q1 2016	Q2 2016
Number of lab-confirmed cases¹	172	193	205	159	159	137	170	145
<i>Female</i>	125	139	130	109	120	93	121	99
<i>Male</i>	46	54	75	50	39	44	49	45
Tests per 100 000 population²	1601	1662	1693	1597	1595	1584	1773	1570

¹Total includes cases where sex is not reported

²Denominator = Statistics New Zealand mid-year population estimates

Number of lab confirmed gonorrhoea cases (female, male and total population) and number of tests per 100 000 population, July 2014 to June 2016

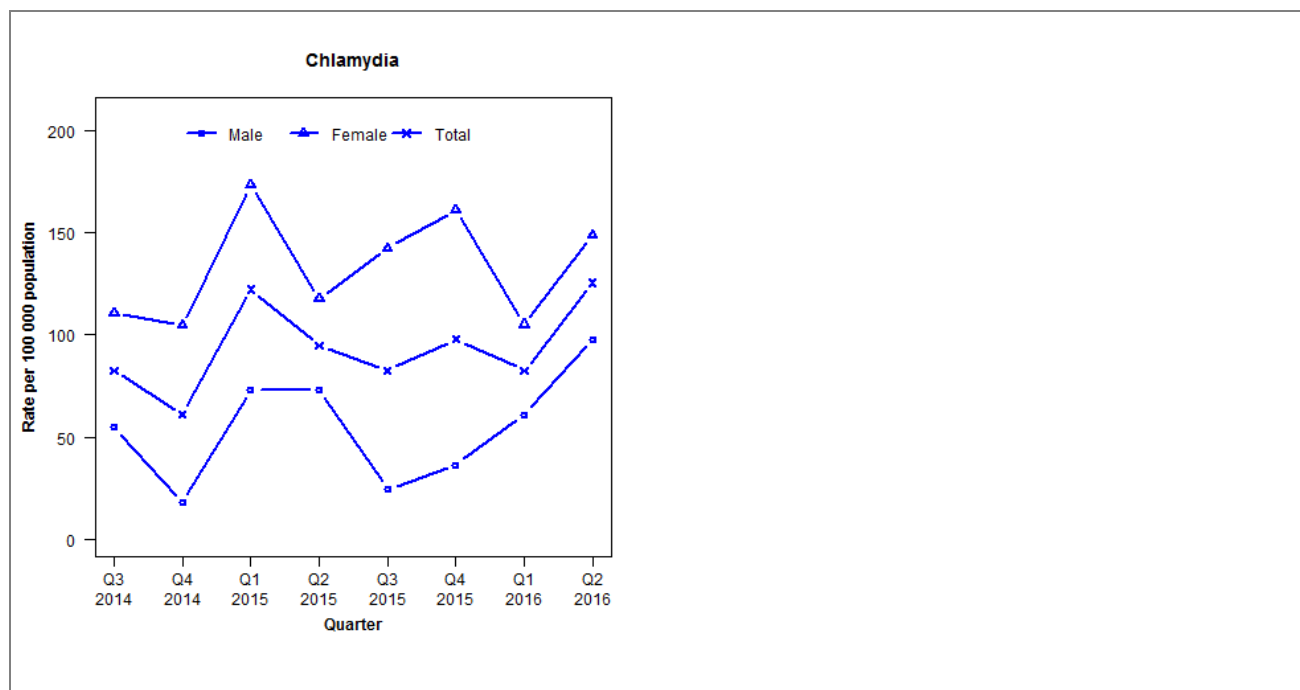
	Q3 2014	Q4 2014	Q1 2015	Q2 2015	Q3 2015	Q4 2015	Q1 2016	Q2 2016
Number of lab-confirmed cases¹	13	6	14	10	9	6	9	10
<i>Female</i>	8	4	7	5	7	2	4	6
<i>Male</i>	5	2	7	5	2	4	5	4
Tests per 100 000 population²	1611	1672	1712	1606	1598	1586	1781	1573

¹Total includes cases where sex is not reported

²Denominator = Statistics New Zealand mid-year population estimates

Laboratory surveillance of chlamydia and gonorrhoea: April - June 2016

Quarterly chlamydia and gonorrhoea rates (female, male and total population), July 2014 to June 2016



¹Total includes cases where sex is not reported

Denominator = Statistics New Zealand mid-year population estimates

Note: Data processing methods allow for exclusion of repeat tests. Gonorrhoea rates are not presented as there are fewer than five cases in many quarters.

Number of lab confirmed chlamydia cases (female, male and total population) and number of tests per 100 000 population, July 2014 to June 2016

	Q3 2014	Q4 2014	Q1 2015	Q2 2015	Q3 2015	Q4 2015	Q1 2016	Q2 2016
Number of lab-confirmed cases¹	27	20	40	31	27	32	27	41
<i>Female</i>	18	17	28	19	23	26	17	24
<i>Male</i>	9	3	12	12	4	6	10	16
Tests per 100 000 population²	1393	1476	1630	1495	1596	1667	1612	1746

¹Total includes cases where sex is not reported

²Denominator = Statistics New Zealand mid-year population estimates

Number of lab confirmed gonorrhoea cases (female, male and total population) and number of tests per 100 000 population, July 2014 to June 2016

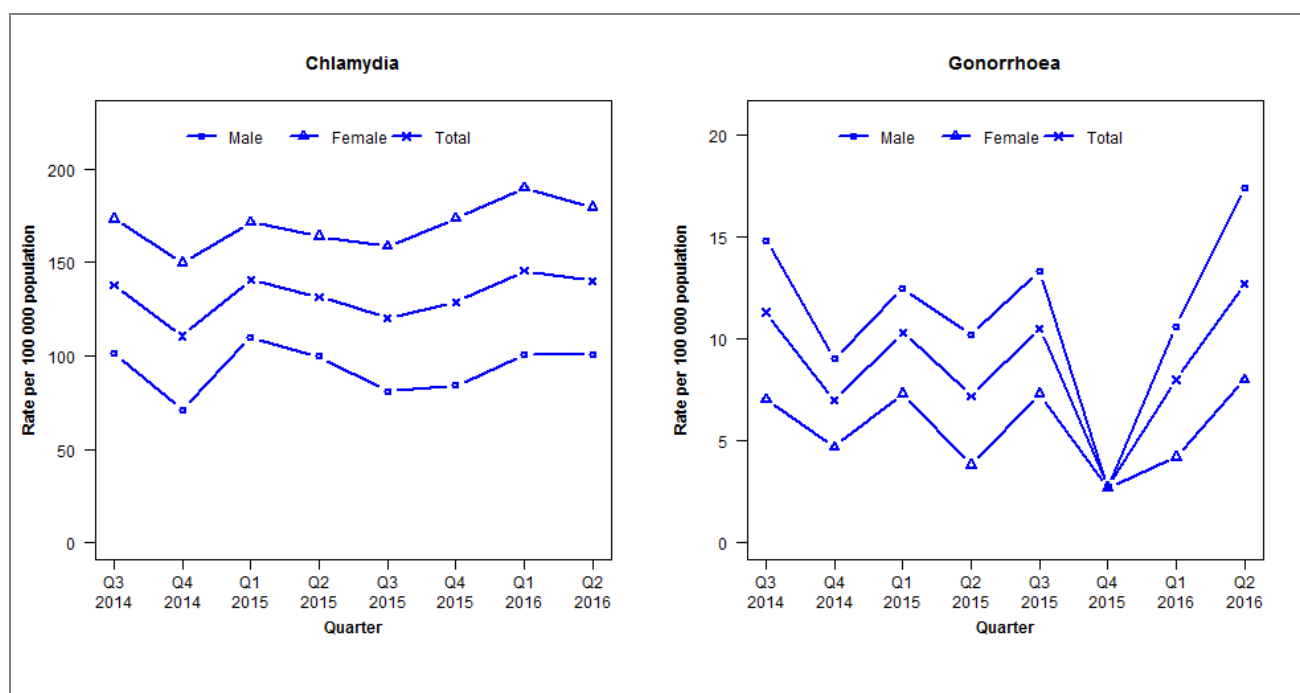
	Q3 2014	Q4 2014	Q1 2015	Q2 2015	Q3 2015	Q4 2015	Q1 2016	Q2 2016
Number of lab-confirmed cases¹	1	0	1	2	0	0	1	2
<i>Female</i>	0	0	0	1	0	0	0	1
<i>Male</i>	1	0	1	1	0	0	1	1
Tests per 100 000 population²	1393	1476	1630	1495	1596	1667	1612	1746

¹Total includes cases where sex is not reported

²Denominator = Statistics New Zealand mid-year population estimates

Laboratory surveillance of chlamydia and gonorrhoea: April - June 2016

Quarterly chlamydia and gonorrhoea rates (female, male and total population), July 2014 to June 2016



¹Total includes cases where sex is not reported

Denominator = Statistics New Zealand mid-year population estimates

Note: Data processing methods allow for exclusion of repeat tests.

Number of lab confirmed chlamydia cases (female, male and total population) and number of tests per 100 000 population, July 2014 to June 2016

	Q3 2014	Q4 2014	Q1 2015	Q2 2015	Q3 2015	Q4 2015	Q1 2016	Q2 2016
Number of lab-confirmed cases¹	709	569	741	693	633	678	766	737
<i>Female</i>	446	386	450	430	416	455	498	471
<i>Male</i>	260	183	290	263	214	222	266	266
Tests per 100 000 population²	2205	2014	2167	2140	2273	2164	2392	2362

¹Total includes cases where sex is not reported

²Denominator = Statistics New Zealand mid-year population estimates

Number of lab confirmed gonorrhoea cases (female, male and total population) and number of tests per 100 000 population, July 2014 to June 2016

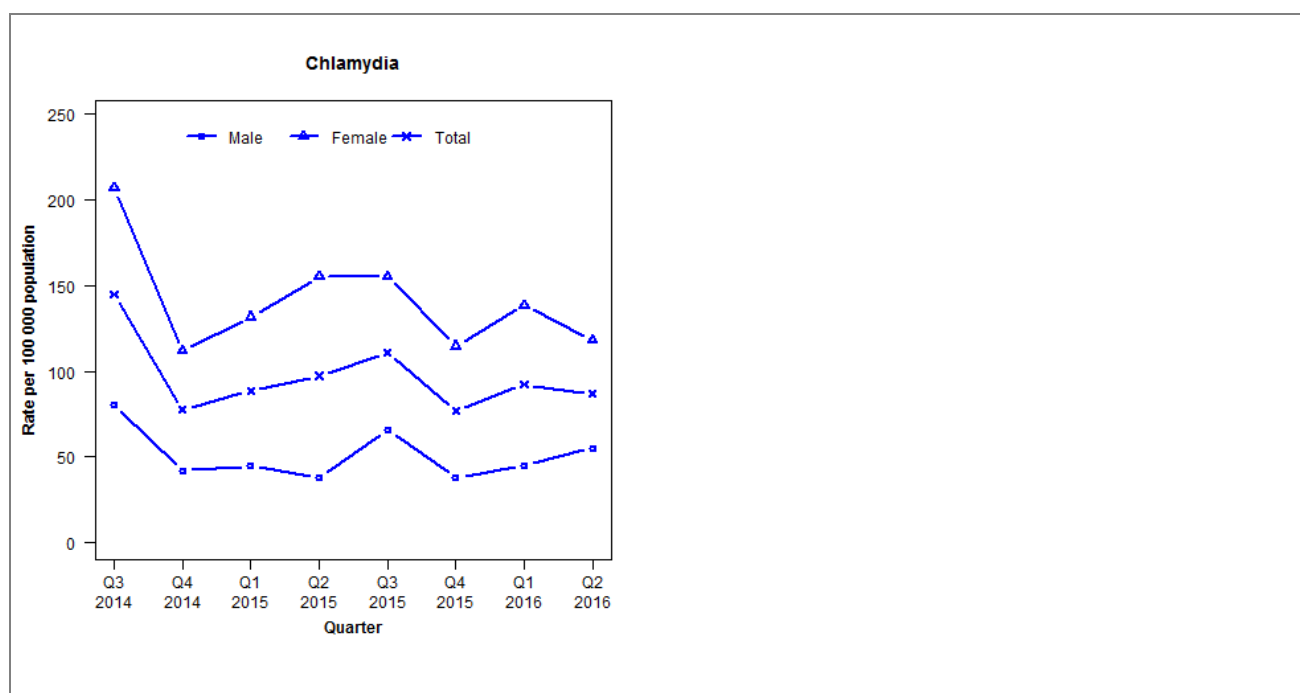
	Q3 2014	Q4 2014	Q1 2015	Q2 2015	Q3 2015	Q4 2015	Q1 2016	Q2 2016
Number of lab-confirmed cases¹	58	36	54	38	55	14	42	67
<i>Female</i>	18	12	19	10	19	7	11	21
<i>Male</i>	38	23	33	27	35	7	28	46
Tests per 100 000 population²	2929	2685	2833	2764	2909	2767	3031	2977

¹Total includes cases where sex is not reported

²Denominator = Statistics New Zealand mid-year population estimates

Laboratory surveillance of chlamydia and gonorrhoea: April - June 2016

Quarterly chlamydia and gonorrhoea rates (female, male and total population), July 2014 to June 2016



¹Total includes cases where sex is not reported

Denominator = Statistics New Zealand mid-year population estimates

Note: Data processing methods introduced allow for exclusion of repeat tests. Gonorrhoea rates are not presented as there are fewer than five cases in many quarters.

Number of lab confirmed chlamydia cases (female, male and total population) and number of tests per 100 000 population, July 2014 to June 2016

	Q3 2014	Q4 2014	Q1 2015	Q2 2015	Q3 2015	Q4 2015	Q1 2016	Q2 2016
Number of lab-confirmed cases¹	84	45	52	57	65	45	54	51
<i>Female</i>	61	33	39	46	46	34	41	35
<i>Male</i>	23	12	13	11	19	11	13	16
Tests per 100 000 population²	1524	1319	1500	1466	1609	1387	1585	1526

¹Total includes cases where sex is not reported

²Denominator = Statistics New Zealand mid-year population estimates

Number of lab confirmed gonorrhoea cases (female, male and total population) and number of tests per 100 000 population, July 2014 to June 2016

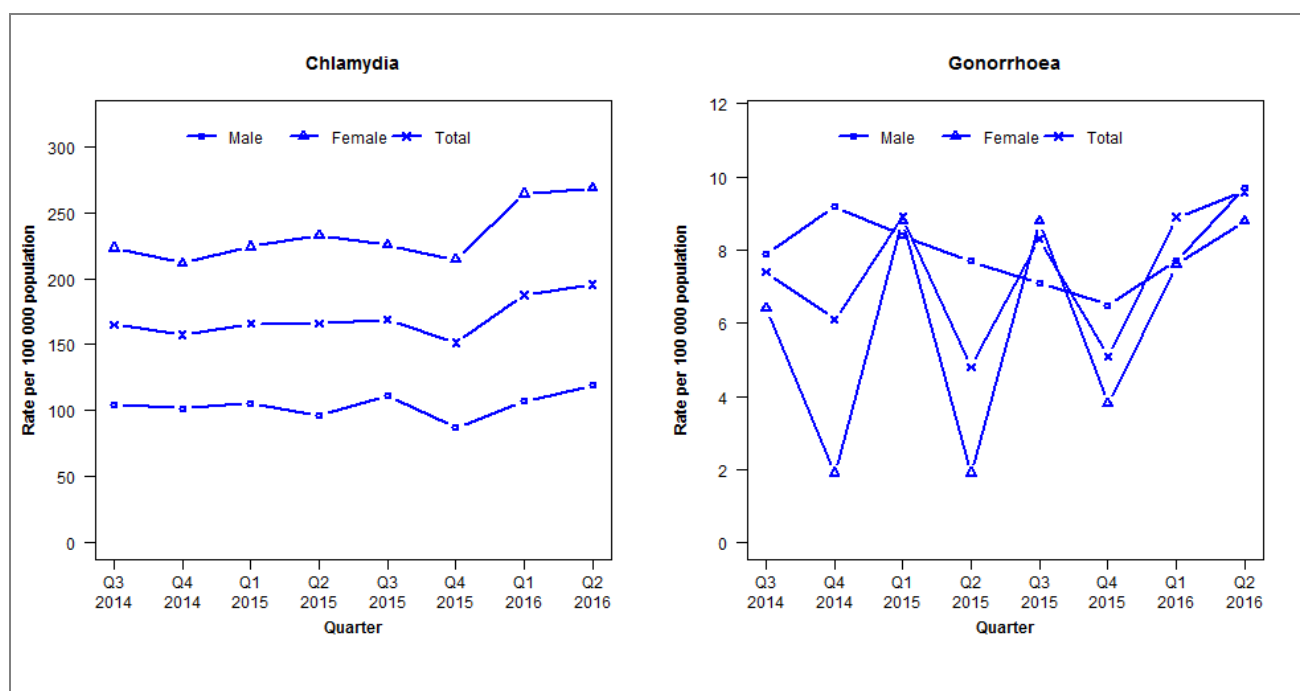
	Q3 2014	Q4 2014	Q1 2015	Q2 2015	Q3 2015	Q4 2015	Q1 2016	Q2 2016
Number of lab-confirmed cases¹	2	2	0	2	1	3	10	6
<i>Female</i>	0	0	0	1	0	1	5	3
<i>Male</i>	2	1	0	1	1	2	3	3
Tests per 100 000 population²	1806	1687	1903	1870	2015	1751	1980	1935

¹Total includes cases where sex is not reported

²Denominator = Statistics New Zealand mid-year population estimates

Laboratory surveillance of chlamydia and gonorrhoea: April - June 2016

Quarterly chlamydia and gonorrhoea rates (female, male and total population), July 2014 to June 2016



¹Total includes cases where sex is not reported

Denominator = Statistics New Zealand mid-year population estimates

Note: Data processing methods allow for exclusion of repeat tests.

Number of lab confirmed chlamydia cases (female, male and total population) and number of tests per 100 000 population, July 2014 to June 2016

	Q3 2014	Q4 2014	Q1 2015	Q2 2015	Q3 2015	Q4 2015	Q1 2016	Q2 2016
Number of lab-confirmed cases¹	511	488	521	521	531	476	589	614
<i>Female</i>	351	333	356	370	358	341	420	427
<i>Male</i>	159	155	164	149	172	135	166	185
Tests per 100 000 population²	2467	2311	2379	2450	2540	2233	2416	2617

¹Total includes cases where sex is not reported

²Denominator = Statistics New Zealand mid-year population estimates

Number of lab confirmed gonorrhoea cases (female, male and total population) and number of tests per 100 000 population, July 2014 to June 2016

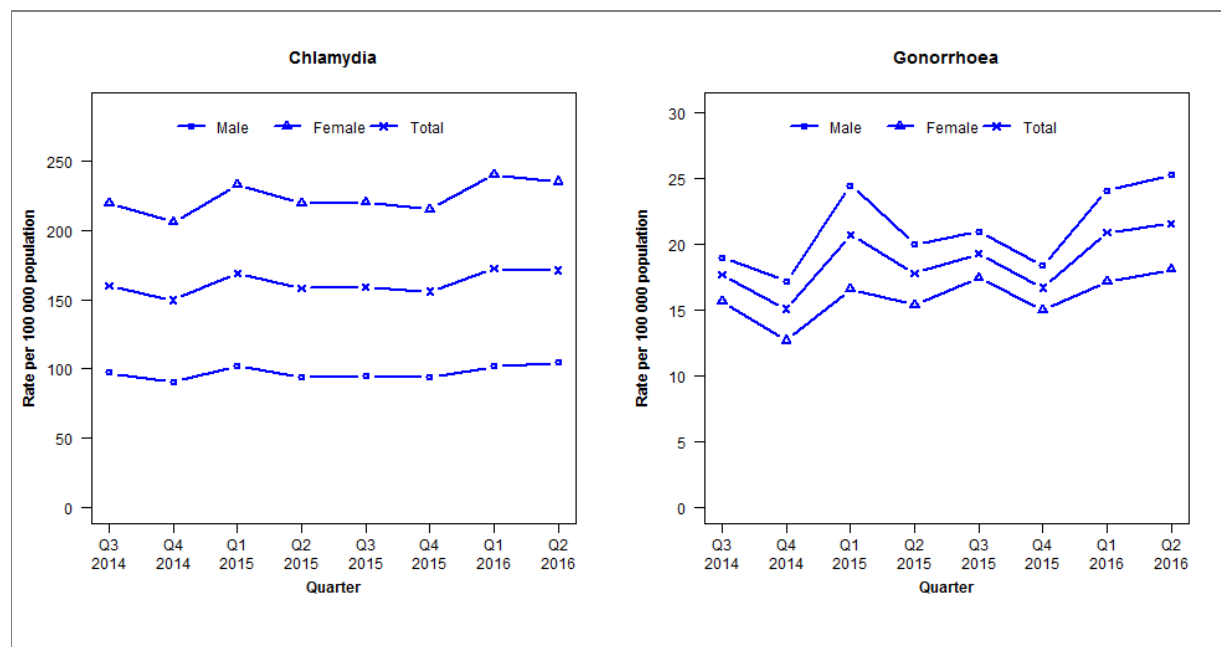
	Q3 2014	Q4 2014	Q1 2015	Q2 2015	Q3 2015	Q4 2015	Q1 2016	Q2 2016
Number of lab-confirmed cases¹	23	19	28	15	26	16	28	30
<i>Female</i>	10	3	14	3	14	6	12	14
<i>Male</i>	12	14	13	12	11	10	12	15
Tests per 100 000 population²	2520	2360	2444	2507	2591	2252	2437	2634

¹Total includes cases where sex is not reported

²Denominator = Statistics New Zealand mid-year population estimates

Laboratory surveillance of chlamydia and gonorrhoea: April - June 2016

Quarterly chlamydia and gonorrhoea rates (female, male and total population), July 2014 to June 2016



¹Total includes cases where sex is not reported

Denominator = Statistics New Zealand mid-year population estimates

Note: Data processing methods allow for exclusion of repeat tests. NAAT (nucleic acid amplification testing) for gonorrhoea has been introduced in the majority of laboratories since 2012. Refer to DHB level reports for further details. Northland data incomplete from Q2 2013, but complete from Q1 2015 onwards. Data not received from Waitemata DHB for all quarters in 2013. Additional 2014 data received has been included and may have impacted slightly on the counts and rates produced.

Number of lab confirmed chlamydia cases (female, male and total population) and number of tests per 100 000 population, July 2014 to June 2016

	Q3 2014	Q4 2014	Q1 2015	Q2 2015	Q3 2015	Q4 2015	Q1 2016	Q2 2016
Number of lab-confirmed cases¹	7217	6740	7759	7268	7296	7162	7925	7862
<i>Female</i>	5041	4733	5439	5127	5141	5028	5609	5498
<i>Male</i>	2148	2001	2305	2123	2139	2126	2300	2357
Tests per 100 000 population²	2312	2202	2334	2299	2357	2268	2466	2404

¹Total includes cases where sex is not reported

²Denominator = Statistics New Zealand mid-year population estimates

Number of lab confirmed gonorrhoea cases (female, male and total population) and number of tests per 100 000 population, July 2014 to June 2016

	Q3 2014	Q4 2014	Q1 2015	Q2 2015	Q3 2015	Q4 2015	Q1 2016	Q2 2016
Number of lab-confirmed cases¹	800	679	951	817	888	768	959	994
<i>Female</i>	362	291	389	360	408	351	403	422
<i>Male</i>	420	380	553	452	473	416	543	570
Tests per 100 000 population²	2560	2441	2607	2552	2618	2515	2733	2604

¹Total includes cases where sex is not reported

²Denominator = Statistics New Zealand mid-year population estimates