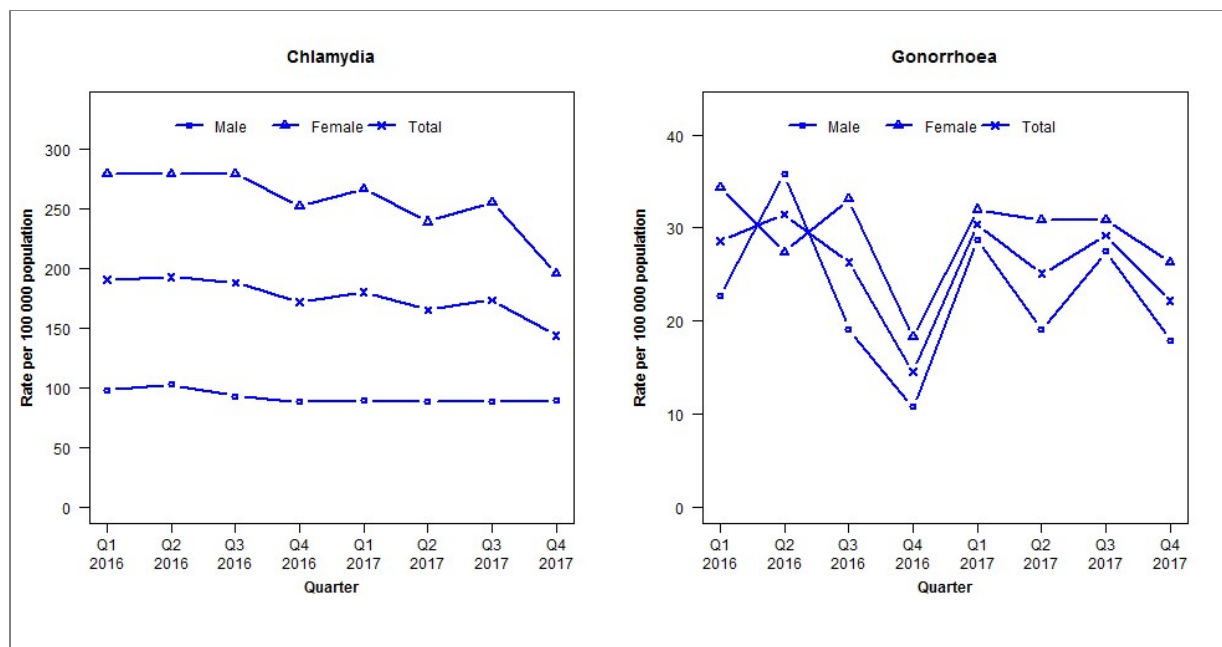


Laboratory surveillance of chlamydia and gonorrhoea: October - December 2017

Quarterly chlamydia and gonorrhoea rates (male, female and total¹ population), January 2016 to December 2017



¹Total includes cases where sex is not reported

Denominator = Statistics New Zealand mid-year population estimates

Note: Data processing methods allow for exclusion of repeat tests.

Number of lab confirmed chlamydia cases (male, female and total population) and number of tests per 100 000 population, January 2015 to December 2017

	Q1 2016	Q2 2016	Q3 2016	Q4 2016	Q1 2017	Q2 2017	Q3 2017	Q4 2017
Number of lab-confirmed cases¹	326	330	322	294	308	283	297	246
<i>Female</i>	244	244	244	220	233	209	223	171
<i>Male</i>	82	86	78	74	75	74	74	75
Tests per 100 000 population²	1875	1866	1780	1686	1840	1861	1854	1755

¹Total includes cases where sex is not reported

²Denominator = Statistics New Zealand mid-year population estimates

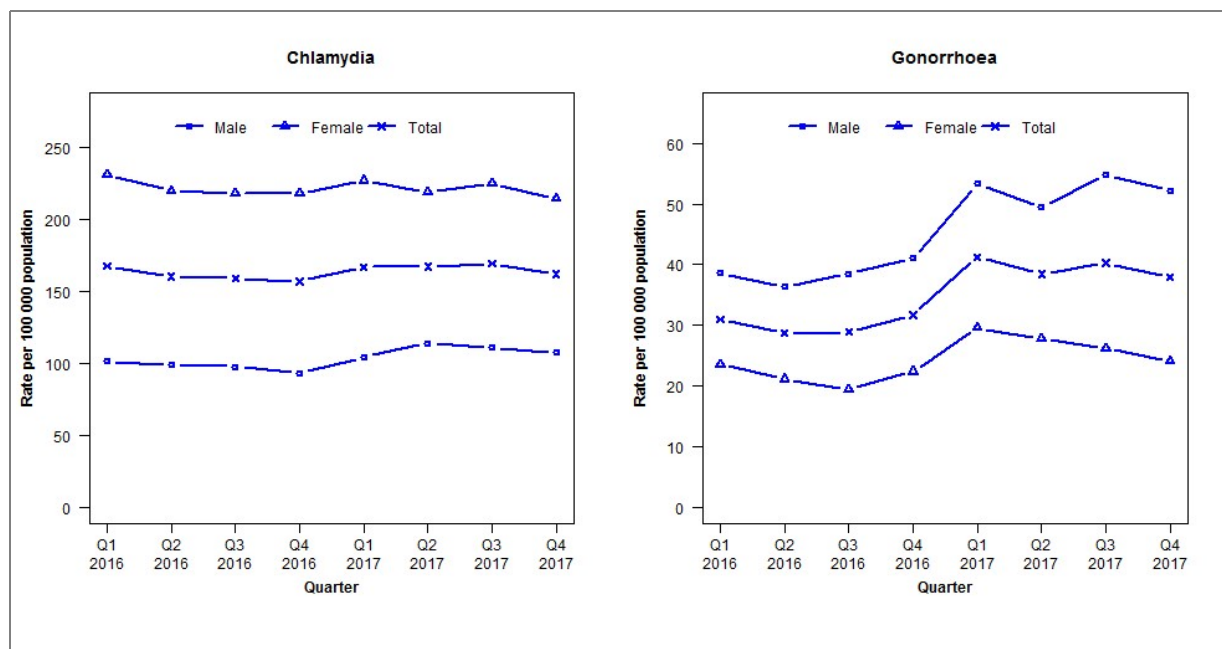
Number of lab confirmed gonorrhoea cases (female, male and total population) and number of tests per 100 000 population, January 2015 to December 2017

	Q1 2016	Q2 2016	Q3 2016	Q4 2016	Q1 2017	Q2 2017	Q3 2017	Q4 2017
Number of lab-confirmed cases¹	49	54	45	25	52	43	50	38
<i>Female</i>	30	24	29	16	28	27	27	23
<i>Male</i>	19	30	16	9	24	16	23	15
Tests per 100 000 population²	2634	2553	2313	2176	2322	2306	2277	2173

¹Total includes cases where sex is not reported

²Denominator = Statistics New Zealand mid-year population estimates

Laboratory surveillance of chlamydia and gonorrhoea: October - December 2017

Quarterly chlamydia and gonorrhoea rates (male, female and total¹ population), January 2016 to December 2017¹Total includes cases where sex is not reported

Denominator = Statistics New Zealand mid-year population estimates

Note: Data processing methods allow for exclusion of repeat tests.

Number of lab confirmed chlamydia cases (male, female and total population) and number of tests per 100 000 population, January 2015 to December 2017

	Q1 2016	Q2 2016	Q3 2016	Q4 2016	Q1 2017	Q2 2017	Q3 2017	Q4 2017
Number of lab-confirmed cases¹	2733	2616	2591	2558	2722	2729	2759	2641
<i>Female</i>	1913	1820	1804	1804	1880	1812	1862	1775
<i>Male</i>	816	795	784	750	839	917	890	864
Tests per 100 000 population²	2701	2537	2447	2249	2460	2417	2502	2428

¹Total includes cases where sex is not reported²Denominator = Statistics New Zealand mid-year population estimates

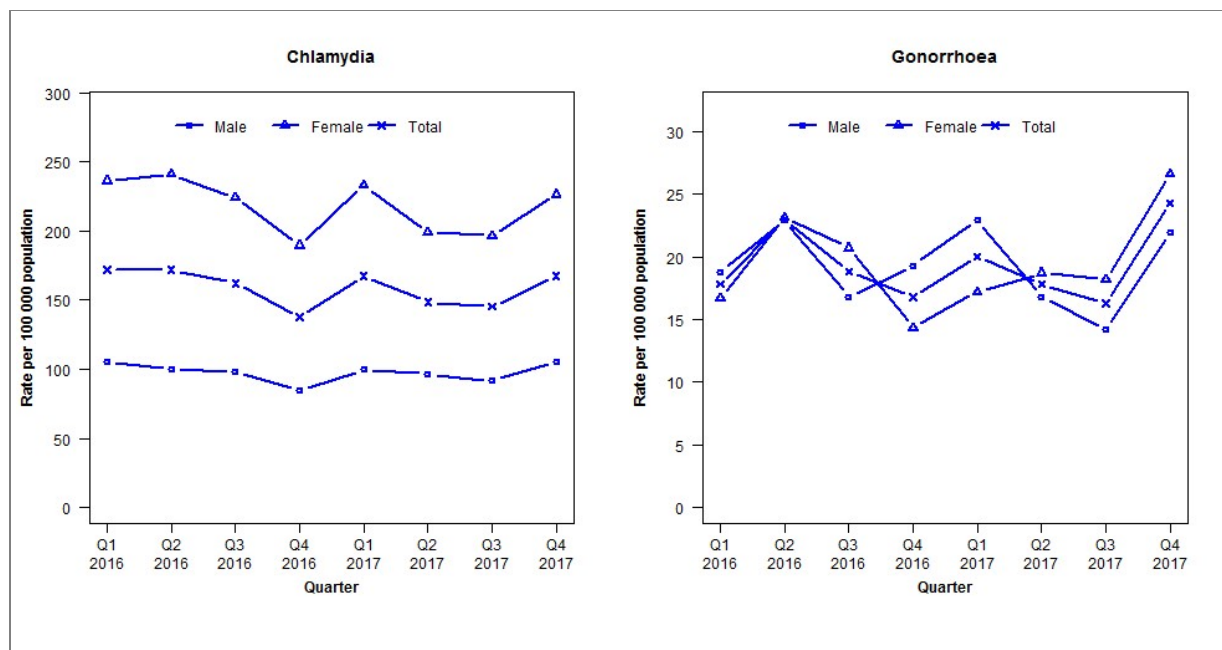
Number of lab confirmed gonorrhoea cases (female, male and total population) and number of tests per 100 000 population, January 2015 to December 2017

	Q1 2016	Q2 2016	Q3 2016	Q4 2016	Q1 2017	Q2 2017	Q3 2017	Q4 2017
Number of lab-confirmed cases¹	506	468	471	517	673	628	657	619
<i>Female</i>	196	176	162	186	245	230	217	200
<i>Male</i>	310	292	309	330	428	397	440	419
Tests per 100 000 population²	2992	2712	2605	2369	2627	2586	2695	2626

¹Total includes cases where sex is not reported²Denominator = Statistics New Zealand mid-year population estimates

Laboratory surveillance of chlamydia and gonorrhoea: October - December 2017

Quarterly chlamydia and gonorrhoea rates (male, female and total¹ population), January 2016 to December 2017



¹Total includes cases where sex is not reported

Denominator = Statistics New Zealand mid-year population estimates

Note: Data processing methods allow for exclusion of repeat tests. Waikato Hospital data missing in previous 2017 quarterly reports (Q1–Q3) have now been included for all quarters in 2017 in this report.

Number of lab confirmed chlamydia cases (male, female and total population) and number of tests per 100 000 population, January 2015 to December 2017

	Q1 2016	Q2 2016	Q3 2016	Q4 2016	Q1 2017	Q2 2017	Q3 2017	Q4 2017
Number of lab-confirmed cases¹	687	687	648	551	669	594	581	669
<i>Female</i>	480	490	455	385	473	404	399	460
<i>Male</i>	207	197	193	166	196	190	180	208
Tests per 100 000 population²	2244	2262	2181	1993	2160	2071	2155	2007

¹Total includes cases where sex is not reported

²Denominator = Statistics New Zealand mid-year population estimates

Number of lab confirmed gonorrhoea cases (female, male and total population) and number of tests per 100 000 population, January 2015 to December 2017

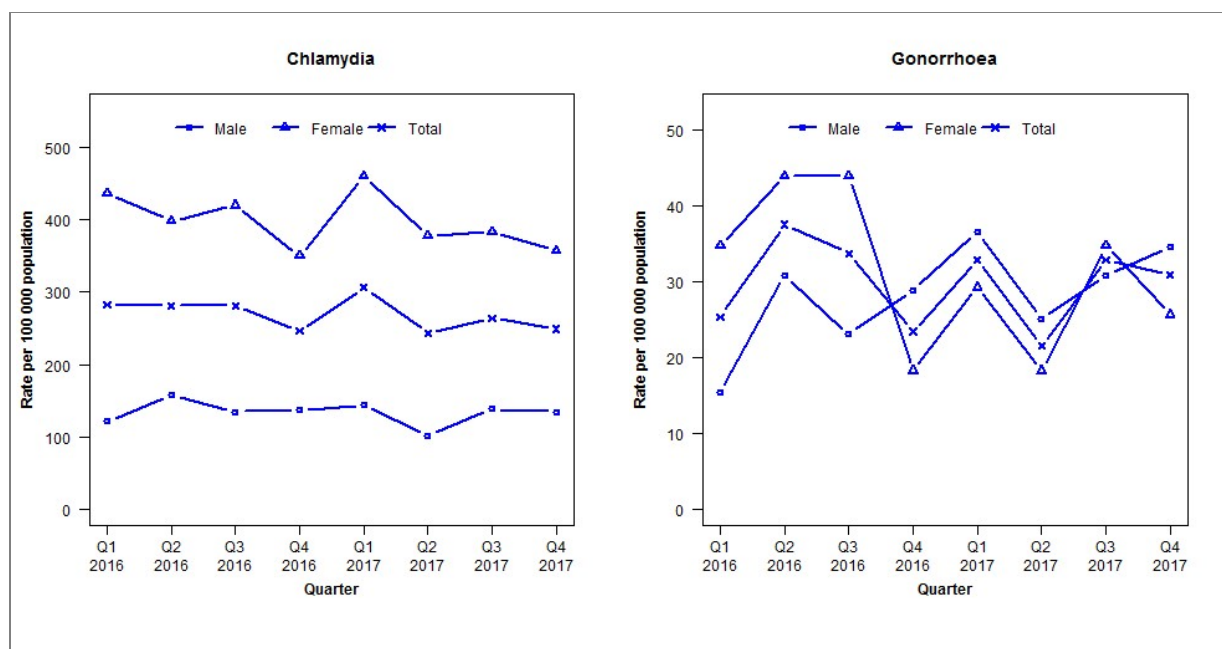
	Q1 2016	Q2 2016	Q3 2016	Q4 2016	Q1 2017	Q2 2017	Q3 2017	Q4 2017
Number of lab-confirmed cases¹	71	92	75	67	80	71	65	97
<i>Female</i>	34	47	42	29	35	38	37	54
<i>Male</i>	37	45	33	38	45	33	28	43
Tests per 100 000 population²	2589	2393	2207	2024	2186	2095	2177	2029

¹Total includes cases where sex is not reported

²Denominator = Statistics New Zealand mid-year population estimates

Laboratory surveillance of chlamydia and gonorrhoea: October - December 2017

Quarterly chlamydia and gonorrhoea rates (male, female and total¹ population), January 2016 to December 2017



¹Total includes cases where sex is not reported

Denominator = Statistics New Zealand mid-year population estimates

Note: Data processing methods allow for exclusion of repeat tests.

Number of lab confirmed chlamydia cases (male, female and total population) and number of tests per 100 000 population, January 2015 to December 2017

	Q1 2016	Q2 2016	Q3 2016	Q4 2016	Q1 2017	Q2 2017	Q3 2017	Q4 2017
Number of lab-confirmed cases¹	301	299	299	262	326	259	281	265
<i>Female</i>	238	217	229	191	251	206	209	195
<i>Male</i>	63	82	70	71	75	53	72	70
Tests per 100 000 population²	3030	2973	2851	2490	2830	2635	2646	2634

¹Total includes cases where sex is not reported

²Denominator = Statistics New Zealand mid-year population estimates

Number of lab confirmed gonorrhoea cases (female, male and total population) and number of tests per 100 000 population, January 2015 to December 2017

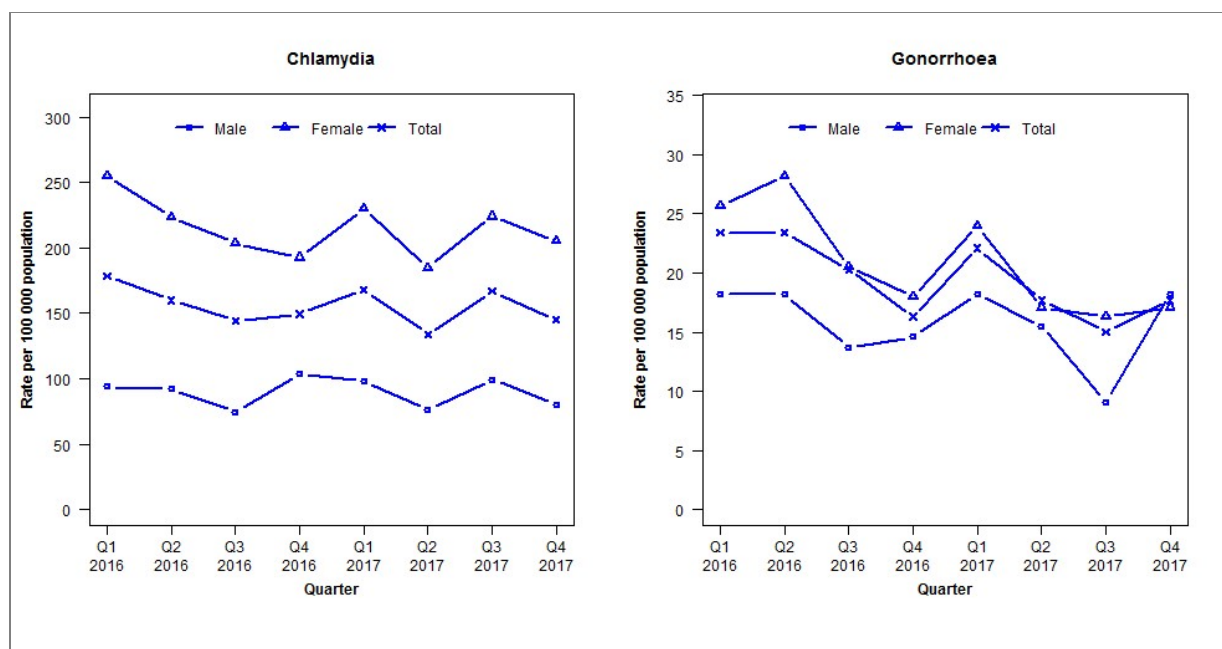
	Q1 2016	Q2 2016	Q3 2016	Q4 2016	Q1 2017	Q2 2017	Q3 2017	Q4 2017
Number of lab-confirmed cases¹	27	40	36	25	35	23	35	33
<i>Female</i>	19	24	24	10	16	10	19	14
<i>Male</i>	8	16	12	15	19	13	16	18
Tests per 100 000 population²	3036	2984	2858	2494	2836	2642	2648	2634

¹Total includes cases where sex is not reported

²Denominator = Statistics New Zealand mid-year population estimates

Laboratory surveillance of chlamydia and gonorrhoea: October - December 2017

Quarterly chlamydia and gonorrhoea rates (male, female and total¹ population), January 2016 to December 2017



¹Total includes cases where sex is not reported

Denominator = Statistics New Zealand mid-year population estimates

Note: Data processing methods allow for exclusion of repeat tests.

Number of lab confirmed chlamydia cases (male, female and total population) and number of tests per 100 000 population, January 2015 to December 2017

	Q1 2016	Q2 2016	Q3 2016	Q4 2016	Q1 2017	Q2 2017	Q3 2017	Q4 2017
Number of lab-confirmed cases¹	405	362	327	339	380	303	378	329
<i>Female</i>	298	261	238	225	269	216	262	240
<i>Male</i>	103	101	82	114	108	84	109	88
Tests per 100 000 population²	2155	2110	2121	1966	2197	2033	2140	1927

¹Total includes cases where sex is not reported

²Denominator = Statistics New Zealand mid-year population estimates

Number of lab confirmed gonorrhoea cases (female, male and total population) and number of tests per 100 000 population, January 2015 to December 2017

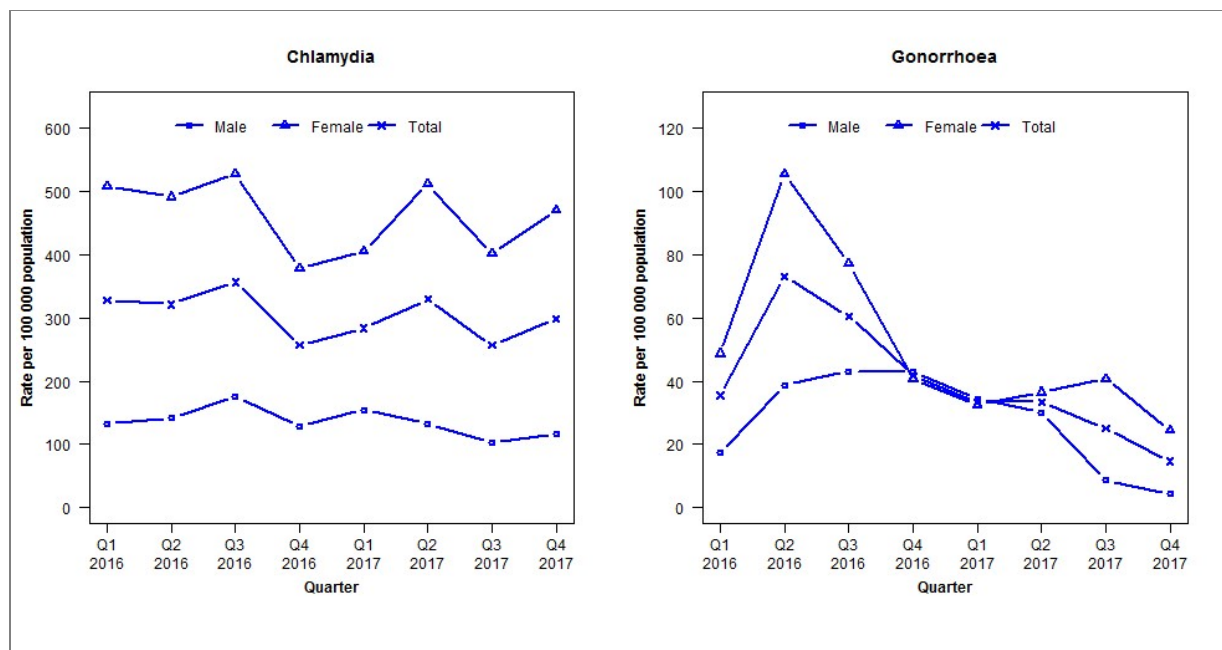
	Q1 2016	Q2 2016	Q3 2016	Q4 2016	Q1 2017	Q2 2017	Q3 2017	Q4 2017
Number of lab-confirmed cases¹	53	53	46	37	50	40	34	40
<i>Female</i>	30	33	24	21	28	20	19	20
<i>Male</i>	20	20	15	16	20	17	10	20
Tests per 100 000 population²	2157	2111	2121	1969	2199	2035	2143	1931

¹Total includes cases where sex is not reported

²Denominator = Statistics New Zealand mid-year population estimates

Laboratory surveillance of chlamydia and gonorrhoea: October - December 2017

Quarterly chlamydia and gonorrhoea rates (male, female and total¹ population), January 2016 to December 2017



¹Total includes cases where sex is not reported

Denominator = Statistics New Zealand mid-year population estimates

Note: Data processing methods allow for exclusion of repeat tests. Gonorrhoea rates for males are based on less than five cases in some quarters.

Number of lab confirmed chlamydia cases (male, female and total population) and number of tests per 100 000 population, January 2015 to December 2017

	Q1 2016	Q2 2016	Q3 2016	Q4 2016	Q1 2017	Q2 2017	Q3 2017	Q4 2017
Number of lab-confirmed cases¹	157	154	171	123	136	158	123	143
<i>Female</i>	125	121	130	93	100	126	99	116
<i>Male</i>	31	33	41	30	36	31	24	27
Tests per 100 000 population²	2346	2340	2352	2254	2440	2523	2402	2348

¹Total includes cases where sex is not reported

²Denominator = Statistics New Zealand mid-year population estimates

Number of lab confirmed gonorrhoea cases (female, male and total population) and number of tests per 100 000 population, January 2015 to December 2017

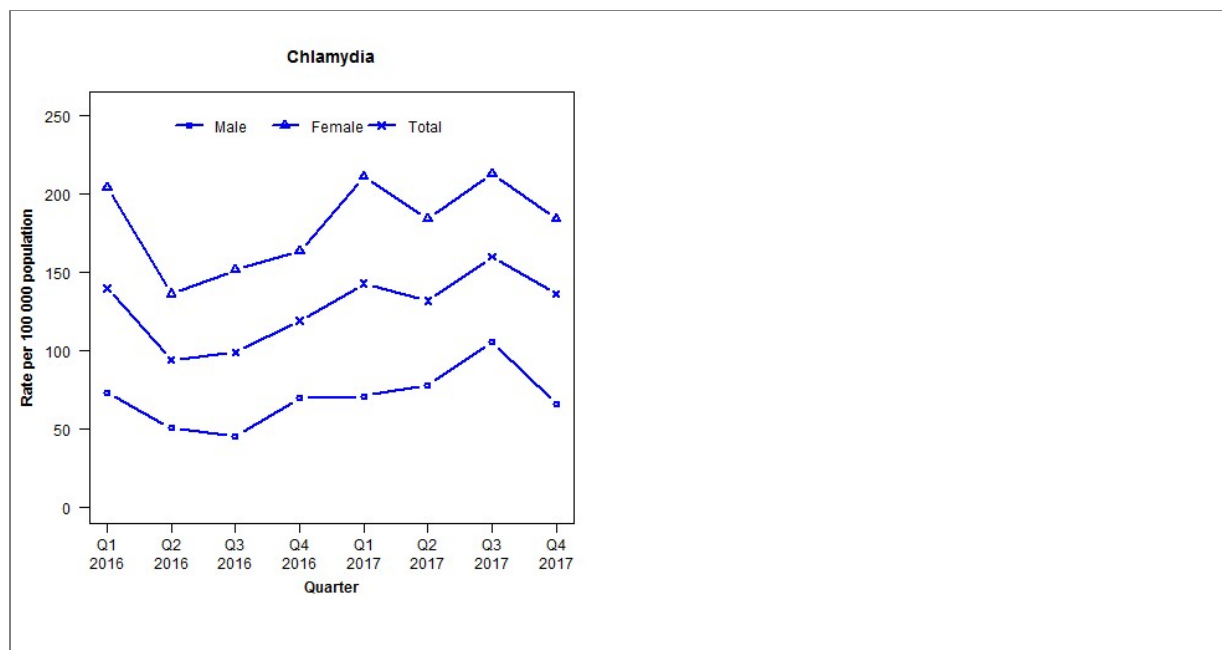
	Q1 2016	Q2 2016	Q3 2016	Q4 2016	Q1 2017	Q2 2017	Q3 2017	Q4 2017
Number of lab-confirmed cases¹	17	35	29	20	16	16	12	7
<i>Female</i>	12	26	19	10	8	9	10	6
<i>Male</i>	4	9	10	10	8	7	2	1
Tests per 100 000 population²	2388	2373	2365	2294	2473	2542	2427	2388

¹Total includes cases where sex is not reported

²Denominator = Statistics New Zealand mid-year population estimates

Laboratory surveillance of chlamydia and gonorrhoea: October - December 2017

Quarterly chlamydia and gonorrhoea rates (male, female and total¹ population), January 2016 to December 2017



¹Total includes cases where sex is not reported

Denominator = Statistics New Zealand mid-year population estimates

Note: Data processing methods allow for exclusion of repeat tests. Gonorrhoea rates are not presented as there are fewer than five cases in many quarters. From 19 January 2017 all gonorrhoea specimens are tested by NAAT.

Number of lab confirmed chlamydia cases (male, female and total population) and number of tests per 100 000 population, January 2015 to December 2017

	Q1 2016	Q2 2016	Q3 2016	Q4 2016	Q1 2017	Q2 2017	Q3 2017	Q4 2017
Number of lab-confirmed cases¹	162	109	115	138	167	154	187	159
<i>Female</i>	120	80	89	96	125	109	126	109
<i>Male</i>	42	29	26	40	41	45	61	38
Tests per 100 000 population²	2033	1984	1829	1850	2062	1995	2148	1975

¹Total includes cases where sex is not reported

²Denominator = Statistics New Zealand mid-year population estimates

Number of lab confirmed gonorrhoea cases (female, male and total population) and number of tests per 100 000 population, January 2015 to December 2017

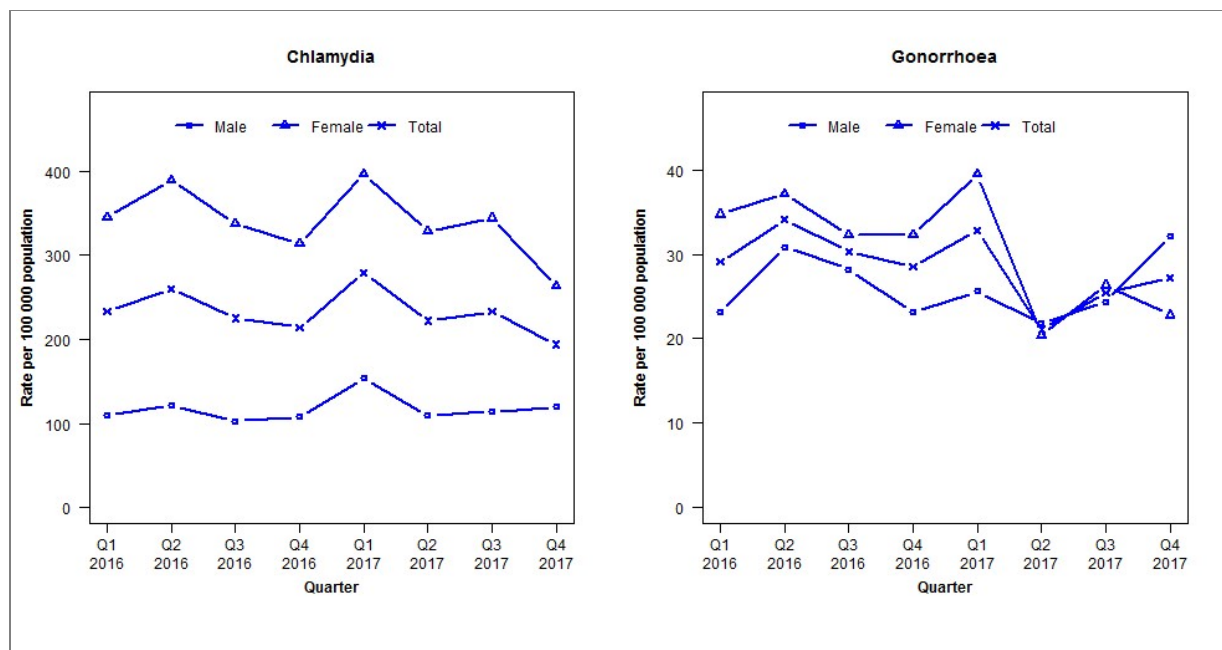
	Q1 2016	Q2 2016	Q3 2016	Q4 2016	Q1 2017	Q2 2017	Q3 2017	Q4 2017
Number of lab-confirmed cases¹	6	1	5	10	9	6	4	0
<i>Female</i>	1	0	1	2	0	2	1	0
<i>Male</i>	5	1	4	8	9	4	3	0
Tests per 100 000 population²	2516	2538	2412	2365	2584	2473	2676	2457

¹Total includes cases where sex is not reported

²Denominator = Statistics New Zealand mid-year population estimates

Laboratory surveillance of chlamydia and gonorrhoea: October - December 2017

Quarterly chlamydia and gonorrhoea rates (male, female and total¹ population), January 2016 to December 2017



¹Total includes cases where sex is not reported

Denominator = Statistics New Zealand mid-year population estimates

Note: Data processing methods allow for exclusion of repeat tests.

Number of lab confirmed chlamydia cases (male, female and total population) and number of tests per 100 000 population, January 2015 to December 2017

	Q1 2016	Q2 2016	Q3 2016	Q4 2016	Q1 2017	Q2 2017	Q3 2017	Q4 2017
Number of lab-confirmed cases¹	376	420	363	346	451	359	376	313
<i>Female</i>	288	325	282	262	331	274	287	220
<i>Male</i>	86	95	80	84	120	85	89	93
Tests per 100 000 population²	2081	2154	2009	1900	2132	2000	2106	1933

¹Total includes cases where sex is not reported

²Denominator = Statistics New Zealand mid-year population estimates

Number of lab confirmed gonorrhoea cases (female, male and total population) and number of tests per 100 000 population, January 2015 to December 2017

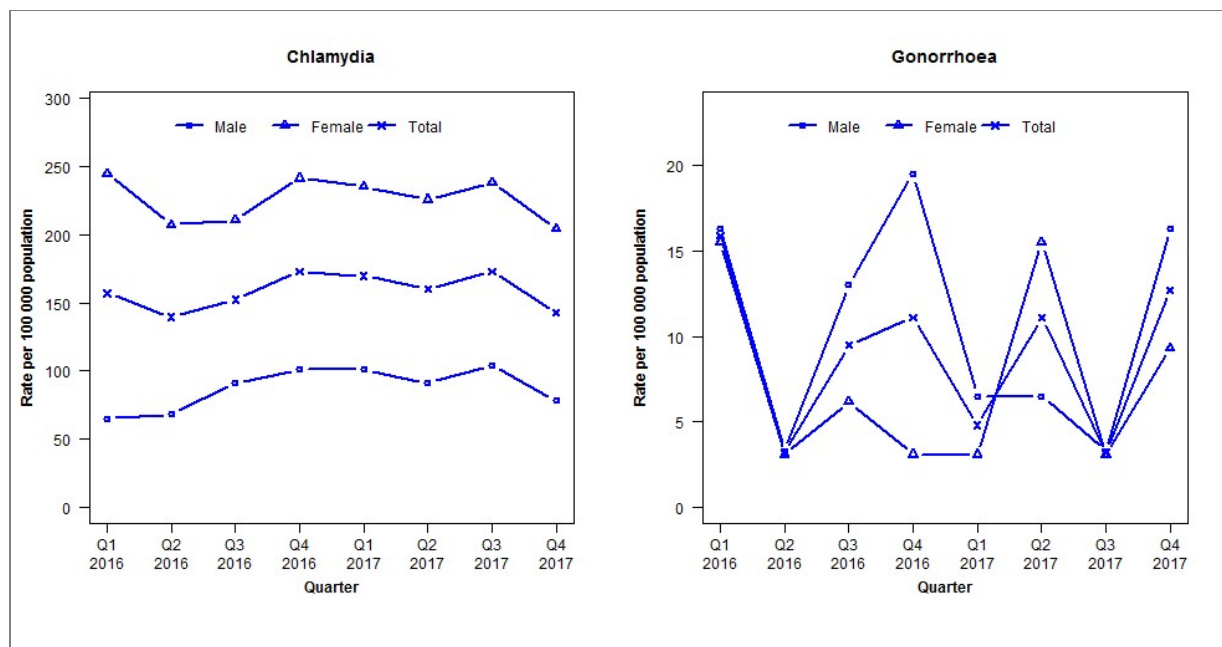
	Q1 2016	Q2 2016	Q3 2016	Q4 2016	Q1 2017	Q2 2017	Q3 2017	Q4 2017
Number of lab-confirmed cases¹	47	55	49	46	53	34	41	44
<i>Female</i>	29	31	27	27	33	17	22	19
<i>Male</i>	18	24	22	18	20	17	19	25
Tests per 100 000 population²	2230	2291	2139	2021	2260	2125	2243	2062

¹Total includes cases where sex is not reported

²Denominator = Statistics New Zealand mid-year population estimates

Laboratory surveillance of chlamydia and gonorrhoea: October - December 2017

Quarterly chlamydia and gonorrhoea rates (male, female and total¹ population), January 2016 to December 2017



¹Total includes cases where sex is not reported

Denominator = Statistics New Zealand mid-year population estimates

Note: Data processing methods allow for exclusion of repeat tests. Gonorrhoea rates for males and females are based on less than five cases in many quarters.

Number of lab confirmed chlamydia cases (male, female and total population) and number of tests per 100 000 population, January 2015 to December 2017

	Q1 2016	Q2 2016	Q3 2016	Q4 2016	Q1 2017	Q2 2017	Q3 2017	Q4 2017
Number of lab-confirmed cases¹	99	88	96	109	107	101	109	90
<i>Female</i>	79	67	68	78	76	73	77	66
<i>Male</i>	20	21	28	31	31	28	32	24
Tests per 100 000 population²	1902	1808	1853	1748	1834	1743	1848	1711

¹Total includes cases where sex is not reported

²Denominator = Statistics New Zealand mid-year population estimates

Number of lab confirmed gonorrhoea cases (female, male and total population) and number of tests per 100 000 population, January 2015 to December 2017

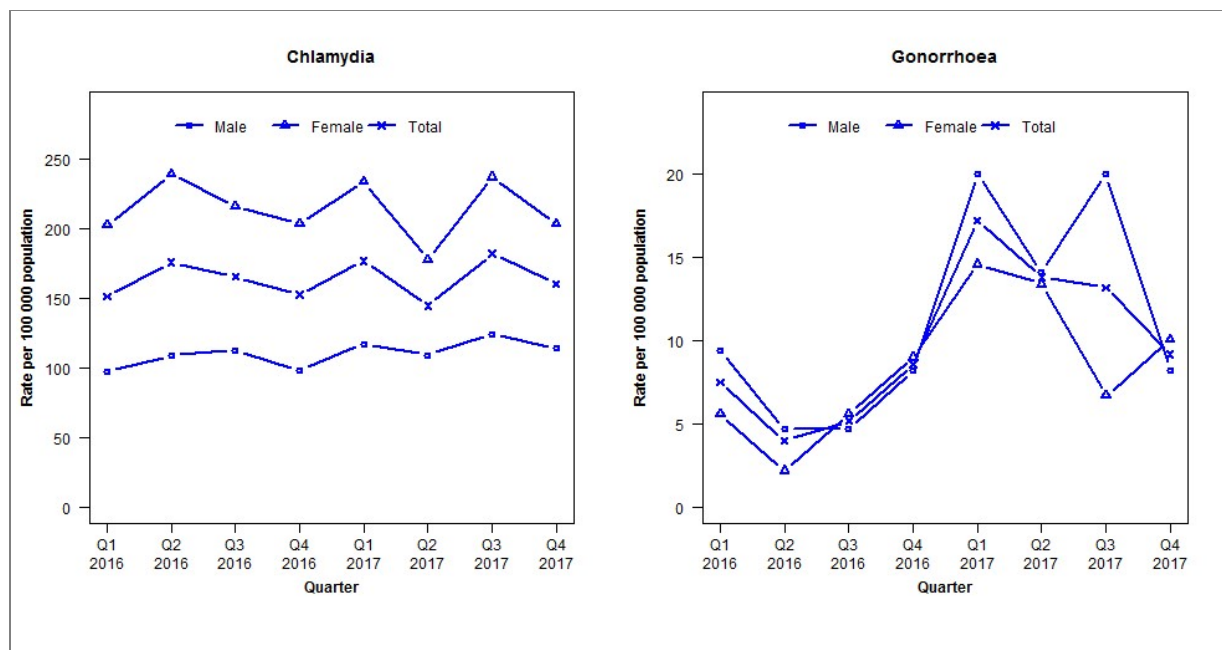
	Q1 2016	Q2 2016	Q3 2016	Q4 2016	Q1 2017	Q2 2017	Q3 2017	Q4 2017
Number of lab-confirmed cases¹	10	2	6	7	3	7	2	8
<i>Female</i>	5	1	2	1	1	5	1	3
<i>Male</i>	5	1	4	6	2	2	1	5
Tests per 100 000 population²	1940	1834	2303	2156	2243	2217	2306	2106

¹Total includes cases where sex is not reported

²Denominator = Statistics New Zealand mid-year population estimates

Laboratory surveillance of chlamydia and gonorrhoea: October - December 2017

Quarterly chlamydia and gonorrhoea rates (male, female and total¹ population), January 2016 to December 2017



¹Total includes cases where sex is not reported

Denominator = Statistics New Zealand mid-year population estimates

Note: Data processing procedures allow for exclusion of repeat tests. Gonorrhoea rates for males and females are based on less than five cases in some quarters.

Number of lab confirmed chlamydia cases (male, female and total population) and number of tests per 100 000 population, January 2015 to December 2017

	Q1 2016	Q2 2016	Q3 2016	Q4 2016	Q1 2017	Q2 2017	Q3 2017	Q4 2017
Number of lab-confirmed cases¹	264	307	289	267	309	253	318	280
<i>Female</i>	181	214	193	182	209	159	212	182
<i>Male</i>	83	93	96	84	100	93	106	97
Tests per 100 000 population²	1930	1878	1837	1841	2017	1927	1971	1878

¹Total includes cases where sex is not reported

²Denominator = Statistics New Zealand mid-year population estimates

Number of lab confirmed gonorrhoea cases (female, male and total population) and number of tests per 100 000 population, January 2015 to December 2017

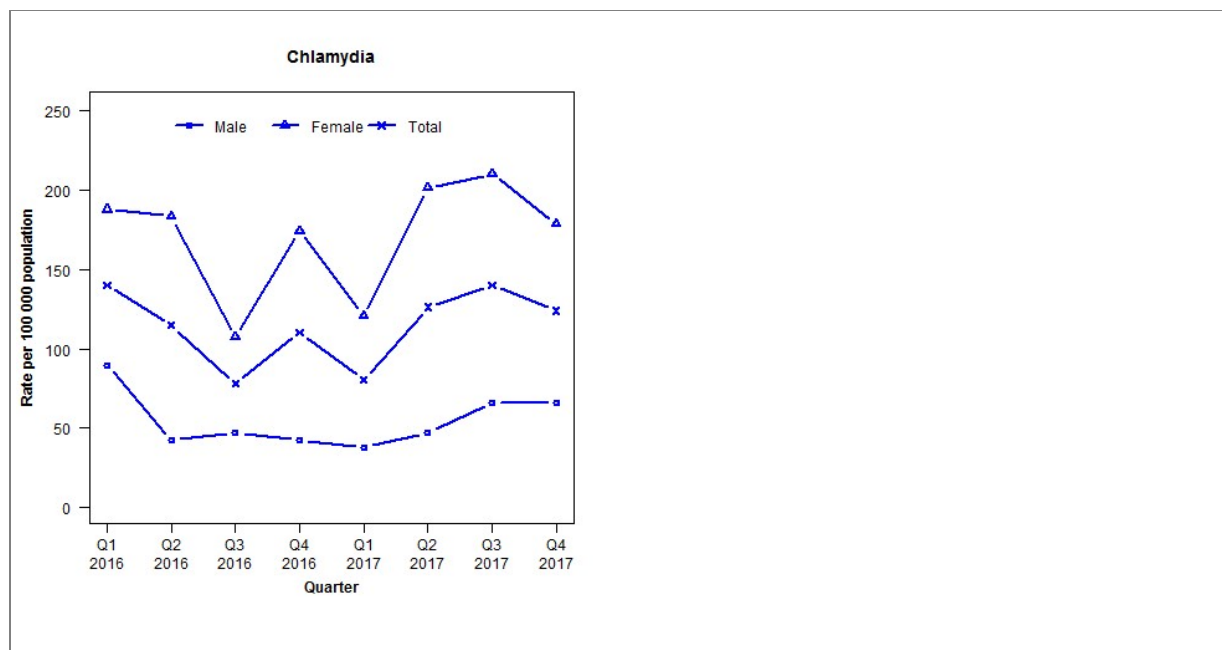
	Q1 2016	Q2 2016	Q3 2016	Q4 2016	Q1 2017	Q2 2017	Q3 2017	Q4 2017
Number of lab-confirmed cases¹	13	7	9	15	30	24	23	16
<i>Female</i>	5	2	5	8	13	12	6	9
<i>Male</i>	8	4	4	7	17	12	17	7
Tests per 100 000 population²	1999	1909	1865	1871	2047	1954	1997	1911

¹Total includes cases where sex is not reported

²Denominator = Statistics New Zealand mid-year population estimates

Laboratory surveillance of chlamydia and gonorrhoea: October - December 2017

Quarterly chlamydia and gonorrhoea rates (male, female and total¹ population), January 2016 to December 2017



¹Total includes cases where sex is not reported

Denominator = Statistics New Zealand mid-year population estimates

Note: Data processing methods allow for exclusion of repeat tests. Gonorrhoea rates are not presented as there are fewer than five cases in all quarters.

Number of lab confirmed chlamydia cases (male, female and total population) and number of tests per 100 000 population, January 2015 to December 2017

	Q1 2016	Q2 2016	Q3 2016	Q4 2016	Q1 2017	Q2 2017	Q3 2017	Q4 2017
Number of lab-confirmed cases¹	61	50	34	48	35	55	61	54
<i>Female</i>	42	41	24	39	27	45	47	40
<i>Male</i>	19	9	10	9	8	10	14	14
Tests per 100 000 population²	1618	1494	1351	1455	1193	1340	1579	1386

¹Total includes cases where sex is not reported

²Denominator = Statistics New Zealand mid-year population estimates

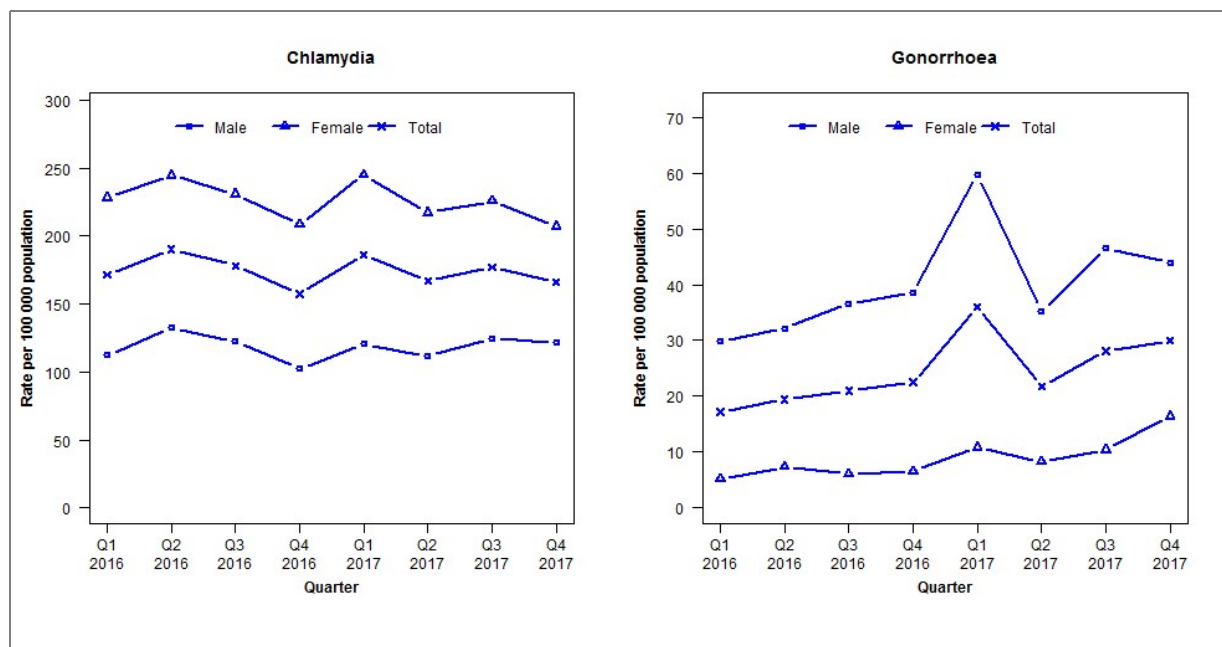
Number of lab confirmed gonorrhoea cases (female, male and total population) and number of tests per 100 000 population, January 2015 to December 2017

	Q1 2016	Q2 2016	Q3 2016	Q4 2016	Q1 2017	Q2 2017	Q3 2017	Q4 2017
Number of lab-confirmed cases¹	0	0	0	2	2	1	4	3
<i>Female</i>	0	0	0	1	1	0	3	2
<i>Male</i>	0	0	0	1	1	1	1	1
Tests per 100 000 population²	1686	1606	1436	1549	1227	1395	1629	1416

¹Total includes cases where sex is not reported

²Denominator = Statistics New Zealand mid-year population estimates

Laboratory surveillance of chlamydia and gonorrhoea: October - December 2017

Quarterly chlamydia and gonorrhoea rates (male, female and total¹ population), January 2016 to December 2017¹Total includes cases where sex is not reported

Denominator = Statistics New Zealand mid-year population estimates

Note: Data processing methods allow for exclusion of repeat tests. From Q1 2016 all data for the Wellington region is now being received (previously excluded a small Wellington Hospital laboratory).

Number of lab confirmed chlamydia cases (male, female and total population) and number of tests per 100 000 population, January 2015 to December 2017

	Q1 2016	Q2 2016	Q3 2016	Q4 2016	Q1 2017	Q2 2017	Q3 2017	Q4 2017
Number of lab-confirmed cases¹	777	862	807	713	843	755	802	752
Female	529	567	535	483	568	503	523	480
Male	248	293	271	226	267	246	276	269
Tests per 100 000 population²	2796	2822	2626	2413	2807	2656	2850	2699

¹Total includes cases where sex is not reported²Denominator = Statistics New Zealand mid-year population estimates

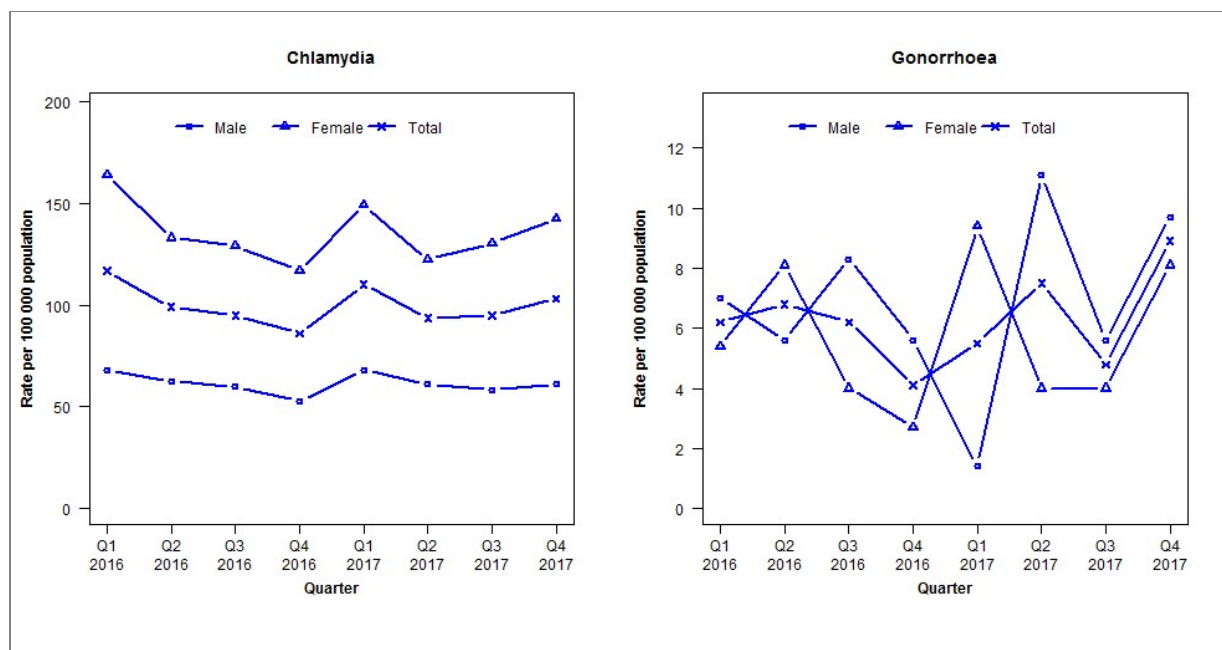
Number of lab confirmed gonorrhoea cases (female, male and total population) and number of tests per 100 000 population, January 2015 to December 2017

	Q1 2016	Q2 2016	Q3 2016	Q4 2016	Q1 2017	Q2 2017	Q3 2017	Q4 2017
Number of lab-confirmed cases¹	78	88	95	102	163	98	127	136
Female	12	17	14	15	25	19	24	38
Male	66	71	81	85	132	78	103	97
Tests per 100 000 population²	2834	2839	2627	2417	2828	2672	2872	2718

¹Total includes cases where sex is not reported²Denominator = Statistics New Zealand mid-year population estimates

Laboratory surveillance of chlamydia and gonorrhoea: October - December 2017

Quarterly chlamydia and gonorrhoea rates (male, female and total¹ population), January 2016 to December 2017



¹Total includes cases where sex is not reported

Denominator = Statistics New Zealand mid-year population estimates

Note: Data processing procedures allow for exclusion of repeat tests. Gonorrhoea rates for males and females are based on less than five cases in some quarters.

Number of lab confirmed chlamydia cases (male, female and total population) and number of tests per 100 000 population, January 2015 to December 2017

	Q1 2016	Q2 2016	Q3 2016	Q4 2016	Q1 2017	Q2 2017	Q3 2017	Q4 2017
Number of lab-confirmed cases¹	171	145	139	126	161	137	139	151
<i>Female</i>	122	99	96	87	111	91	97	106
<i>Male</i>	49	45	43	38	49	44	42	44
Tests per 100 000 population²	1756	1555	1484	1432	1624	1530	1597	1564

¹Total includes cases where sex is not reported

²Denominator = Statistics New Zealand mid-year population estimates

Number of lab confirmed gonorrhoea cases (female, male and total population) and number of tests per 100 000 population, January 2015 to December 2017

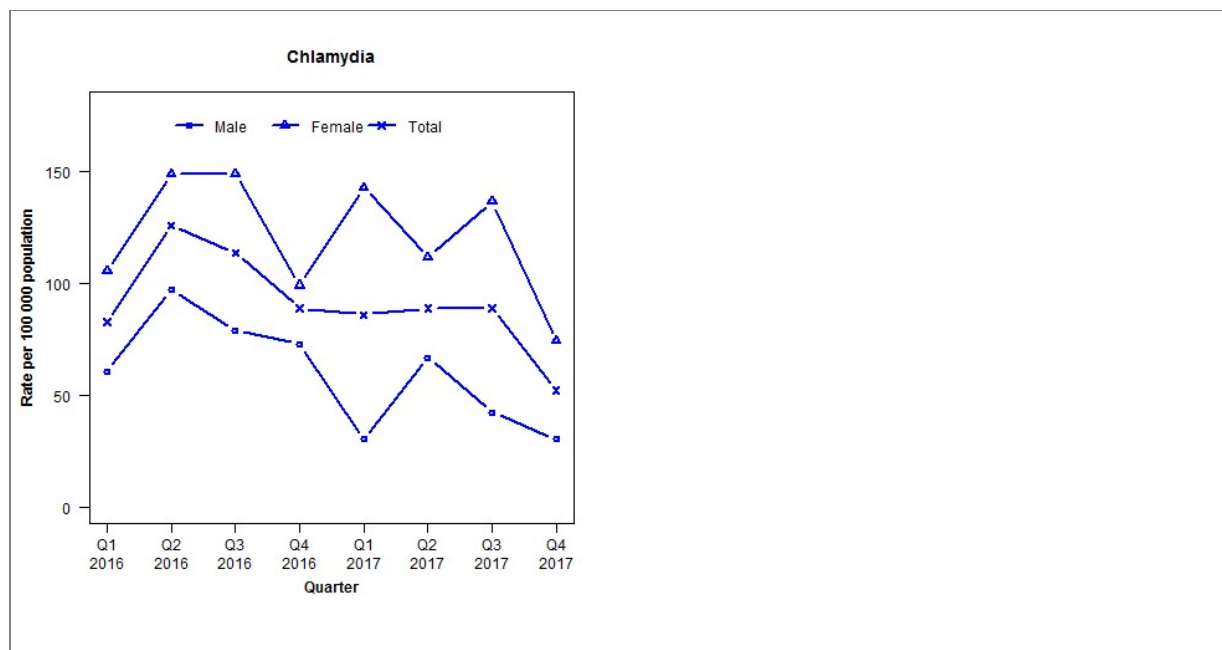
	Q1 2016	Q2 2016	Q3 2016	Q4 2016	Q1 2017	Q2 2017	Q3 2017	Q4 2017
Number of lab-confirmed cases¹	9	10	9	6	8	11	7	13
<i>Female</i>	4	6	3	2	7	3	3	6
<i>Male</i>	5	4	6	4	1	8	4	7
Tests per 100 000 population²	1763	1558	1486	1437	1631	1532	1599	1569

¹Total includes cases where sex is not reported

²Denominator = Statistics New Zealand mid-year population estimates

Laboratory surveillance of chlamydia and gonorrhoea: October - December 2017

Quarterly chlamydia and gonorrhoea rates (male, female and total¹ population), January 2016 to December 2017



¹Total includes cases where sex is not reported

Denominator = Statistics New Zealand mid-year population estimates

Note: Data processing methods allow for exclusion of repeat tests. Gonorrhoea rates are not presented as there are fewer than five cases in all quarters.

Number of lab confirmed chlamydia cases (male, female and total population) and number of tests per 100 000 population, January 2015 to December 2017

	Q1 2016	Q2 2016	Q3 2016	Q4 2016	Q1 2017	Q2 2017	Q3 2017	Q4 2017
Number of lab-confirmed cases¹	27	41	37	29	28	29	29	17
<i>Female</i>	17	24	24	16	23	18	22	12
<i>Male</i>	10	16	13	12	5	11	7	5
Tests per 100 000 population²	1620	1755	1564	1481	1506	1451	1595	1377

¹Total includes cases where sex is not reported

²Denominator = Statistics New Zealand mid-year population estimates

Number of lab confirmed gonorrhoea cases (female, male and total population) and number of tests per 100 000 population, January 2015 to December 2017

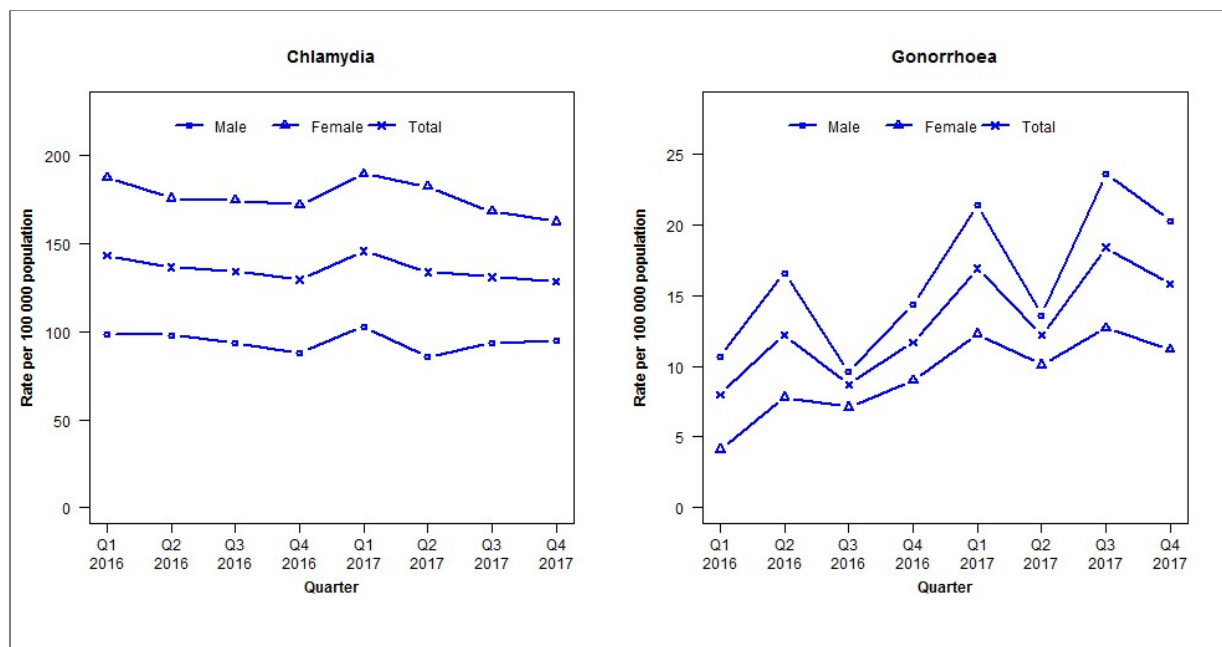
	Q1 2016	Q2 2016	Q3 2016	Q4 2016	Q1 2017	Q2 2017	Q3 2017	Q4 2017
Number of lab-confirmed cases¹	1	2	1	2	0	1	1	3
<i>Female</i>	0	1	1	1	0	1	0	2
<i>Male</i>	1	1	0	1	0	0	1	1
Tests per 100 000 population²	1620	1755	1564	1481	1506	1451	1595	1377

¹Total includes cases where sex is not reported

²Denominator = Statistics New Zealand mid-year population estimates

Laboratory surveillance of chlamydia and gonorrhoea: October - December 2017

Quarterly chlamydia and gonorrhoea rates (male, female and total¹ population), January 2016 to December 2017



¹Total includes cases where sex is not reported

Denominator = Statistics New Zealand mid-year population estimates

Note: Data processing methods allow for exclusion of repeat tests.

Number of lab confirmed chlamydia cases (male, female and total population) and number of tests per 100 000 population, January 2015 to December 2017

	Q1 2016	Q2 2016	Q3 2016	Q4 2016	Q1 2017	Q2 2017	Q3 2017	Q4 2017
Number of lab-confirmed cases¹	772	737	724	699	787	722	706	693
<i>Female</i>	503	471	468	461	508	489	451	435
<i>Male</i>	267	266	254	238	279	232	254	258
Tests per 100 000 population²	2334	2305	2298	2132	2441	2322	2317	2231

¹Total includes cases where sex is not reported

²Denominator = Statistics New Zealand mid-year population estimates

Number of lab confirmed gonorrhoea cases (female, male and total population) and number of tests per 100 000 population, January 2015 to December 2017

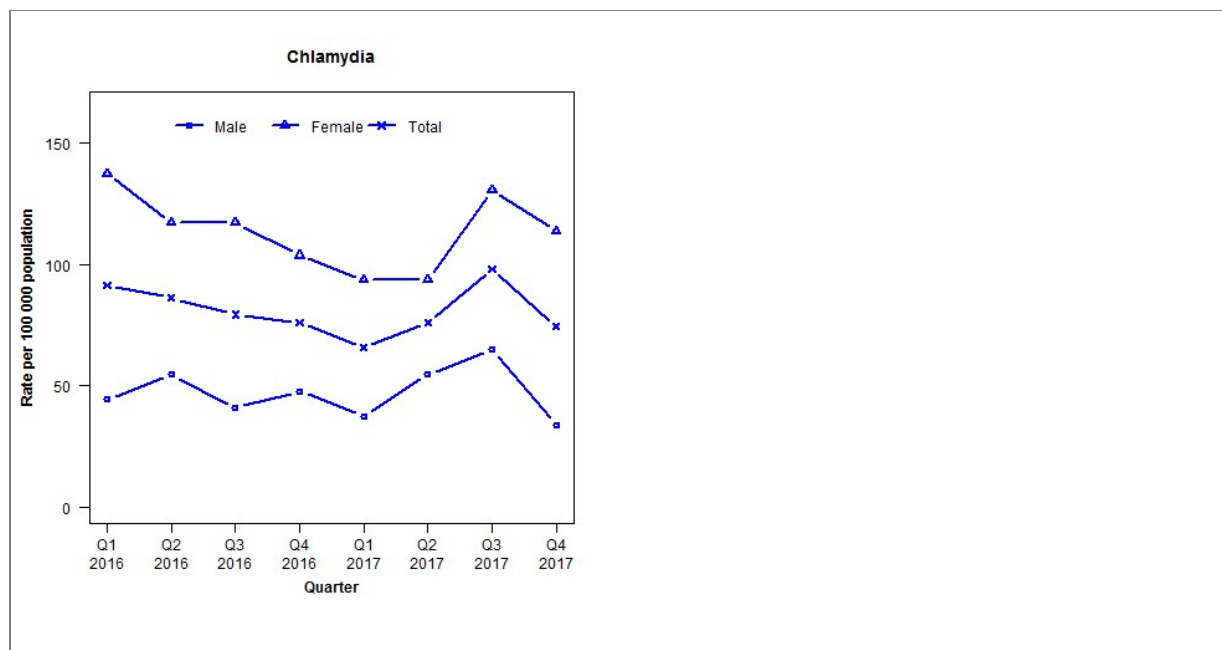
	Q1 2016	Q2 2016	Q3 2016	Q4 2016	Q1 2017	Q2 2017	Q3 2017	Q4 2017
Number of lab-confirmed cases¹	43	66	47	63	91	66	99	85
<i>Female</i>	11	21	19	24	33	27	34	30
<i>Male</i>	29	45	26	39	58	37	64	55
Tests per 100 000 population²	2958	2905	2907	2658	3023	2887	2902	2708

¹Total includes cases where sex is not reported

²Denominator = Statistics New Zealand mid-year population estimates

Laboratory surveillance of chlamydia and gonorrhoea: October - December 2017

Quarterly chlamydia and gonorrhoea rates (male, female and total¹ population), January 2016 to December 2017



¹Total includes cases where sex is not reported

Denominator = Statistics New Zealand mid-year population estimates

Note: Data processing methods introduced allow for exclusion of repeat tests. Gonorrhoea rates are not presented as there are fewer than five cases in many quarters.

Number of lab confirmed chlamydia cases (male, female and total population) and number of tests per 100 000 population, January 2015 to December 2017

	Q1 2016	Q2 2016	Q3 2016	Q4 2016	Q1 2017	Q2 2017	Q3 2017	Q4 2017
Number of lab-confirmed cases¹	54	51	47	45	39	45	58	44
<i>Female</i>	41	35	35	31	28	28	39	34
<i>Male</i>	13	16	12	14	11	16	19	10
Tests per 100 000 population²	1570	1511	1450	1285	1423	1227	1393	1183

¹Total includes cases where sex is not reported

²Denominator = Statistics New Zealand mid-year population estimates

Number of lab confirmed gonorrhoea cases (female, male and total population) and number of tests per 100 000 population, January 2015 to December 2017

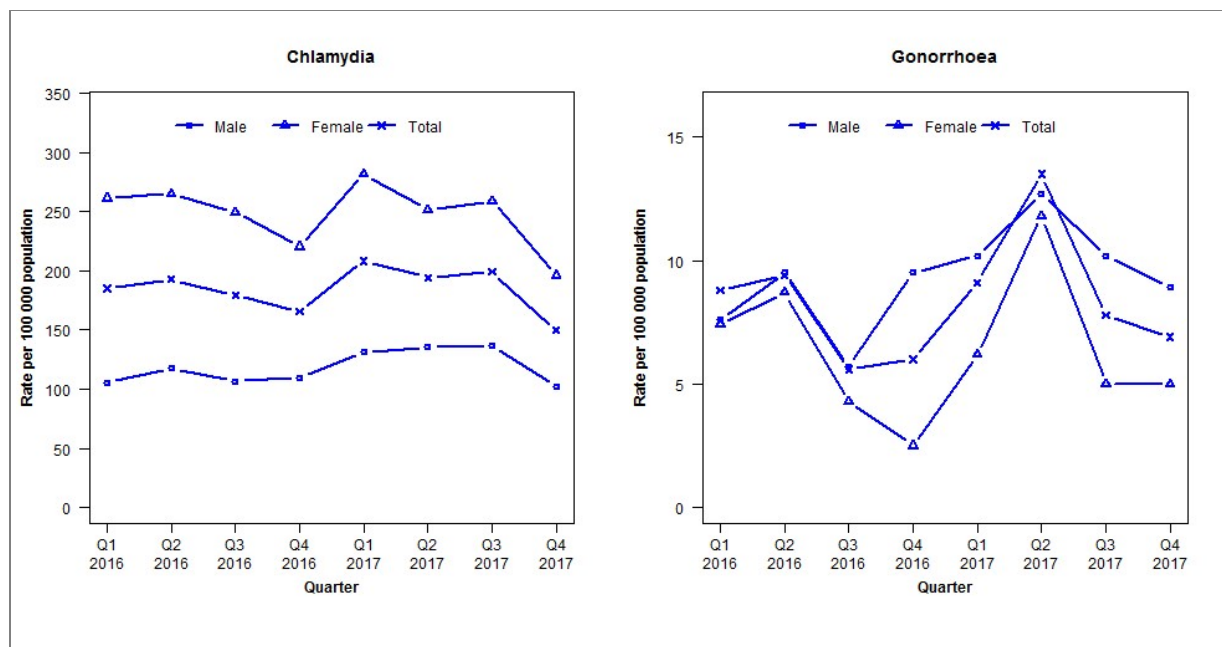
	Q1 2016	Q2 2016	Q3 2016	Q4 2016	Q1 2017	Q2 2017	Q3 2017	Q4 2017
Number of lab-confirmed cases¹	10	6	1	6	1	2	1	1
<i>Female</i>	5	3	0	2	1	1	1	1
<i>Male</i>	3	3	1	4	0	0	0	0
Tests per 100 000 population²	1961	1917	1849	1607	1829	1601	1766	1464

¹Total includes cases where sex is not reported

²Denominator = Statistics New Zealand mid-year population estimates

Laboratory surveillance of chlamydia and gonorrhoea: October - December 2017

Quarterly chlamydia and gonorrhoea rates (male, female and total¹ population), January 2016 to December 2017



¹Total includes cases where sex is not reported

Denominator = Statistics New Zealand mid-year population estimates

Note: Data processing methods allow for exclusion of repeat tests. Gonorrhoea rate for females is based on less than five cases in one quarter.

Number of lab confirmed chlamydia cases (male, female and total population) and number of tests per 100 000 population, January 2015 to December 2017

	Q1 2016	Q2 2016	Q3 2016	Q4 2016	Q1 2017	Q2 2017	Q3 2017	Q4 2017
Number of lab-confirmed cases¹	590	614	571	528	664	619	634	477
<i>Female</i>	421	427	402	355	454	405	417	316
<i>Male</i>	166	185	168	173	207	213	215	161
Tests per 100 000 population²	2380	2578	2487	2197	2429	2472	2560	2234

¹Total includes cases where sex is not reported

²Denominator = Statistics New Zealand mid-year population estimates

Number of lab confirmed gonorrhoea cases (female, male and total population) and number of tests per 100 000 population, January 2015 to December 2017

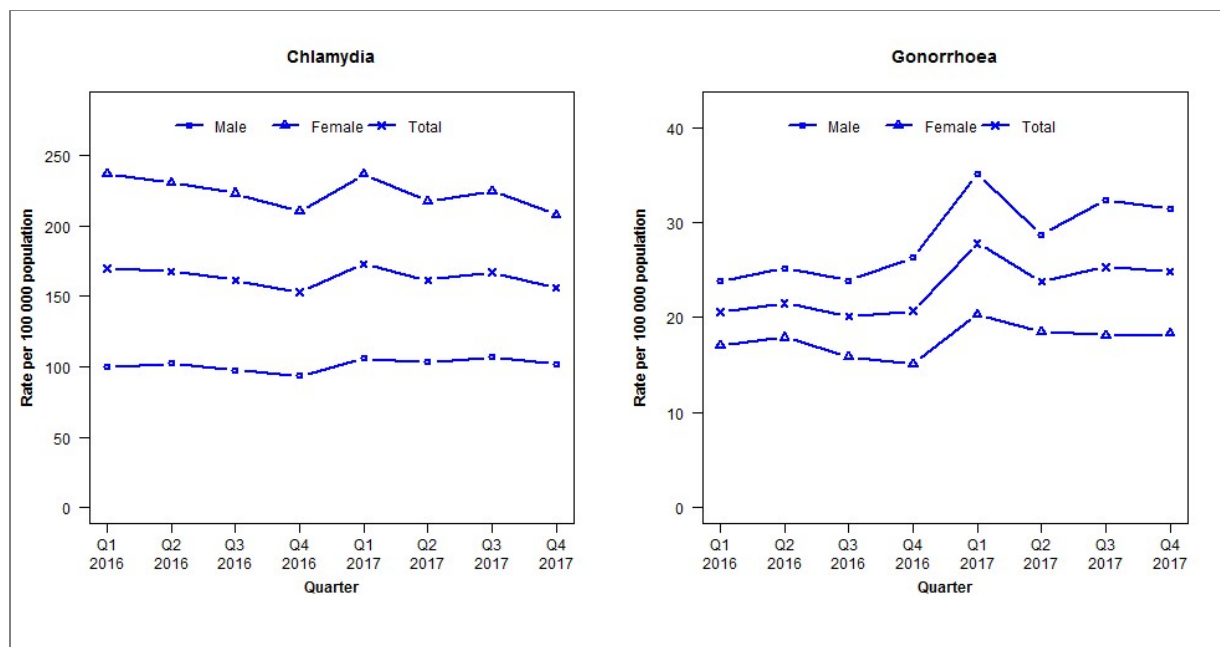
	Q1 2016	Q2 2016	Q3 2016	Q4 2016	Q1 2017	Q2 2017	Q3 2017	Q4 2017
Number of lab-confirmed cases¹	28	30	18	19	29	43	25	22
<i>Female</i>	12	14	7	4	10	19	8	8
<i>Male</i>	12	15	9	15	16	20	16	14
Tests per 100 000 population²	2401	2595	2504	2213	2446	2486	2574	2247

¹Total includes cases where sex is not reported

²Denominator = Statistics New Zealand mid-year population estimates

Laboratory surveillance of chlamydia and gonorrhoea: October - December 2017

Quarterly chlamydia and gonorrhoea rates (male, female and total¹ population), January 2016 to December 2017



¹Total includes cases where sex is not reported

Denominator = Statistics New Zealand mid-year population estimates

Note: Data processing methods allow for exclusion of repeat tests. NAAT (nucleic acid amplification testing) for gonorrhoea has been introduced in the majority of laboratories since 2012. Refer to DHB level reports for further details. Waikato Hospital data missing in previous 2017 quarterly reports (Q1–Q3) have now been included for all quarters in 2017 in this report.

Number of lab confirmed chlamydia cases (male, female and total population) and number of tests per 100 000 population, January 2015 to December 2017

	Q1 2016	Q2 2016	Q3 2016	Q4 2016	Q1 2017	Q2 2017	Q3 2017	Q4 2017
Number of lab-confirmed cases¹	7962	7872	7580	7175	8112	7581	7838	7322
<i>Female</i>	5641	5503	5316	5008	5646	5186	5352	4957
<i>Male</i>	2305	2362	2249	2154	2447	2379	2464	2356
Tests per 100 000 population²	2416	2360	2275	2103	2309	2259	2357	2219

¹Total includes cases where sex is not reported

²Denominator = Statistics New Zealand mid-year population estimates

Number of lab confirmed gonorrhoea cases (female, male and total population) and number of tests per 100 000 population, January 2015 to December 2017

	Q1 2016	Q2 2016	Q3 2016	Q4 2016	Q1 2017	Q2 2017	Q3 2017	Q4 2017
Number of lab-confirmed cases¹	968	1009	942	969	1304	1115	1186	1165
<i>Female</i>	405	426	379	359	483	441	432	435
<i>Male</i>	550	581	552	606	810	663	747	728
Tests per 100 000 population²	2678	2556	2455	2257	2511	2431	2542	2342

¹Total includes cases where sex is not reported

²Denominator = Statistics New Zealand mid-year population estimates