

The laboratory-based surveillance for influenza and common respiratory viruses is carried out all-year-around by the NZ virus laboratory network consisting of the WHO National Influenza Centre (NIC) at ESR and six hospital laboratories in Auckland (2), Waikato, Wellington, Christchurch and Dunedin. This laboratory network tests specimens ordered by clinicians for hospital inpatients and outpatients during normal clinical practice (serving ~70% of the NZ population). In addition, this laboratory network also conducts testing for public health surveillance, including SARI, ILI and WellKiwis (i.e. SHIVERS) cohort surveillance.

Caution is needed in the interpretation: 1) Sample collection is ordered by clinicians based on clinical judgement for patient management, rather than a systematic sampling approach for surveillance; 2) The number of laboratory tests can be influenced by testing priorities and demands, reagent and resource availability; 3) Testing technology and instruments evolve over the years which may have contributed to improved sensitivity for detection in recent years.

Tables and Figures below show the weekly influenza and common non-influenza viruses reported from the laboratory network in 2023. Note: complete SARS-CoV-2 reporting is provided at <https://nzcoviddashboard.esr.cri.nz/#/>

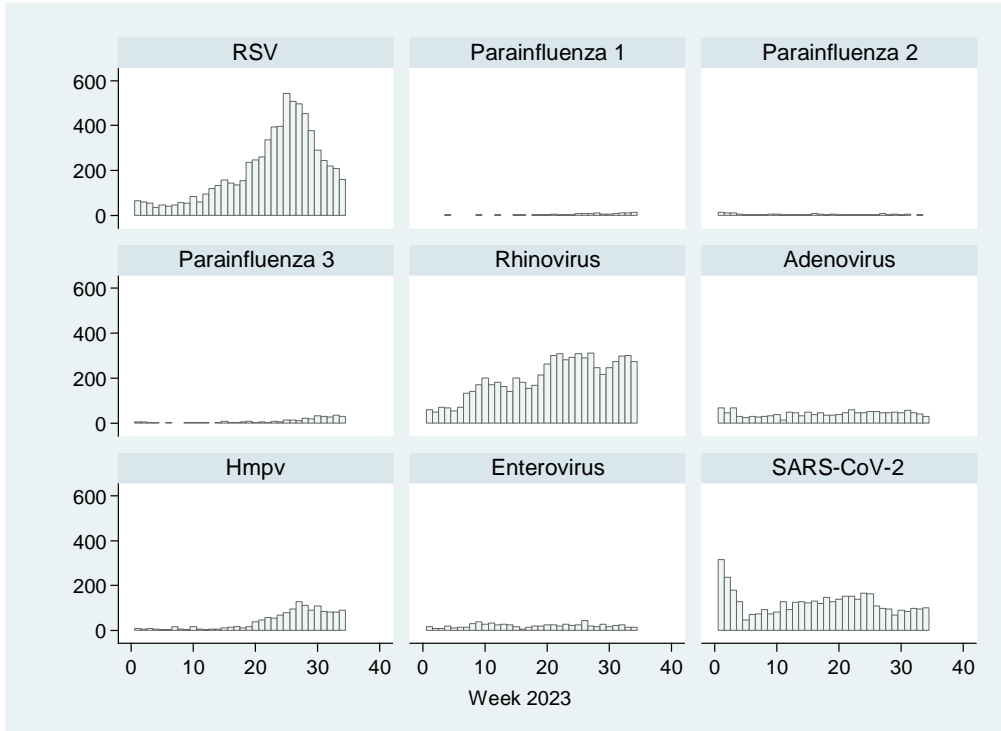
Table 1. Influenza respiratory viruses reported, since 1 January 2023.

<i>Influenza viruses</i>	Total
No. of positive specimens	10171
Influenza A	6435
A (not subtyped)	5182
A(H1N1)pdm09	1143
A(H1N1)pdm09 by PCR	1069
A/Sydney/5/2021 (H1N1)pdm09-like	74
A(H3N2)	110
A(H3N2) by PCR	110
A/Darwin/6/2021 (H3N2)-like	0
Influenza B	3736
B (lineage not determined)	3187
B/Yamagata lineage	0
B/Yamagata lineage by PCR	0
B/Phuket/3073/2013-like	0
B/Victoria lineage	549
B/Victoria lineage by PCR	509
B/Austria/1359417/2021-like	40

Table 2. Non-influenza respiratory viruses reported, since 1 January 2023.

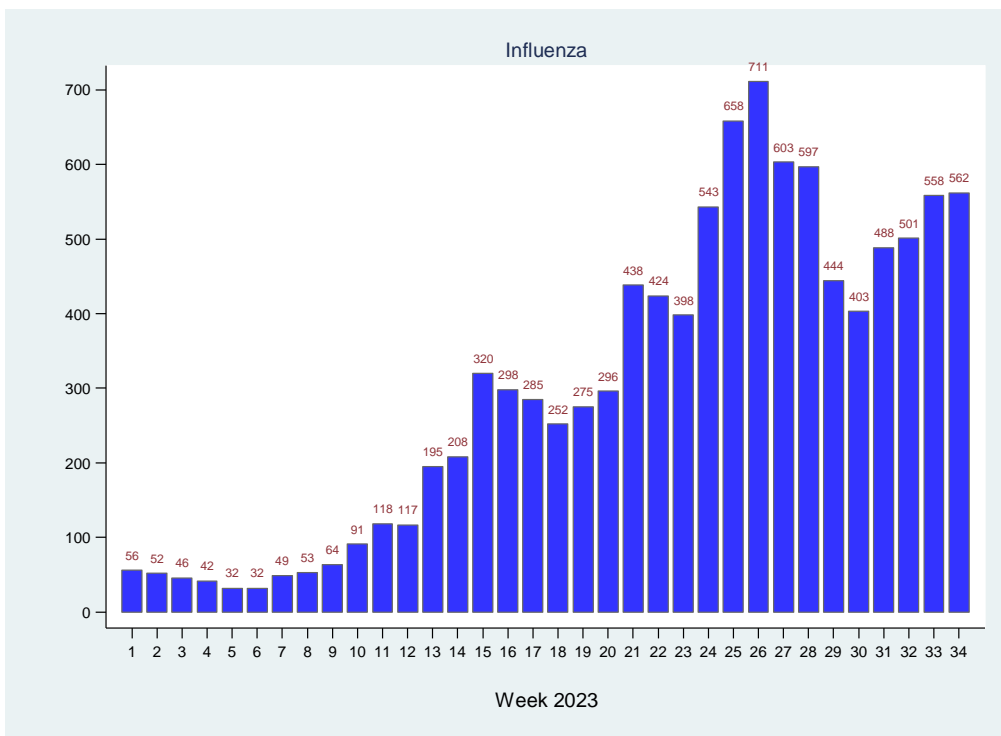
<i>Non-influenza respiratory viruses</i>	Total
No. of positive specimens	17770
SARS-CoV-2	4179
Respiratory syncytial virus (RSV)	6908
Parainfluenza 1 (PIV1)	119
Parainfluenza 2 (PIV2)	148
Parainfluenza 3 (PIV3)	290
Rhinovirus (RV)	6782
Adenovirus (AdV)	1401
Human metapneumovirus (hMPV)	1392
Enterovirus	730

Figure 1. Non-influenza respiratory viruses reported, since 1 January 2023, by week.



Numbers for recent weeks are updated due to time lag in receiving laboratory test results.

Figure 2. Influenza viruses reported, since 1 January 2023, by week.



This weekly report is compiled by ESR. For more information please contact:

Tim Wood: T: +64 4 529 0611 E: Tim.Wood@esr.cri.nz

Sue Huang: T: +64 4 529 0606 E: Sue.Huang@esr.cri.nz